

LAGRANGE ROAD

MIDDLE AVENUE

FRANK A. HALITZKA

3-24-72
D.V. 1044 P. 792

-011
3.00 AC.

-020
3.08 AC.

OLA J. & ADA I. TUCKER
G-08-66
D.V. 927 P. 699

FRANK R. RYBARCYK JR. & JHERIE L. RYBARCYK
O.R.V. 142 P. 741

-020
6.00 AC.

(7.6957 AC.)

(7.1141 AC.)

-021

31.61 AC. ± Rec.
32.1757 AC. Calc. TOTAL

(16.8876 AC.)

(9.7735 AC.)

R.G. LLOYD & R.L. WRIGHT
4-15-74
D.V. 1100 P. 196 PCL. 2

-018
25 AC.

(EMRO LAND CO. 6-13-78)
MARATHON OIL COMPANY
D.V. 1008 P. 266

(7.5924 AC.)

118

-023
14.14 AC.

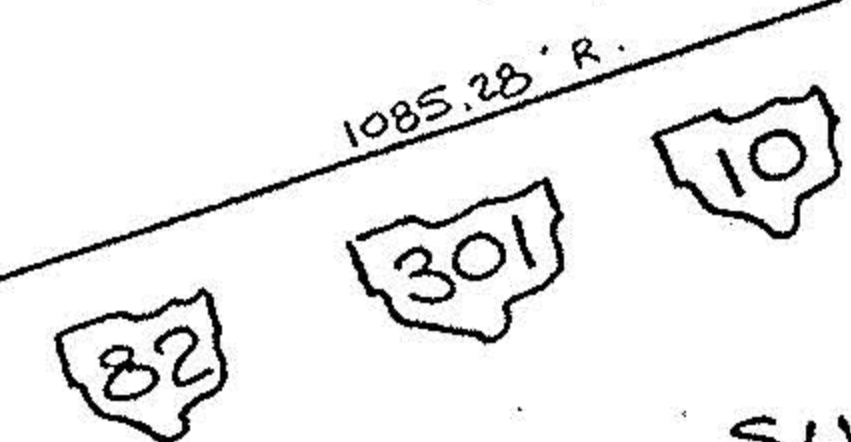
WALTER G. CASPER & EMILY WALKER
O.R.V. 190 P. 469

SECTION LINE

13

5.00 AC.

STATE ROUTES



SURVEY MAP OF

PART OF CARLISLE TWP. SEC. 8

TOWNSHIP OF CARLISLE COUNTY OF LORAIN STATE OF OHIO

SCALE: 1" = 200'

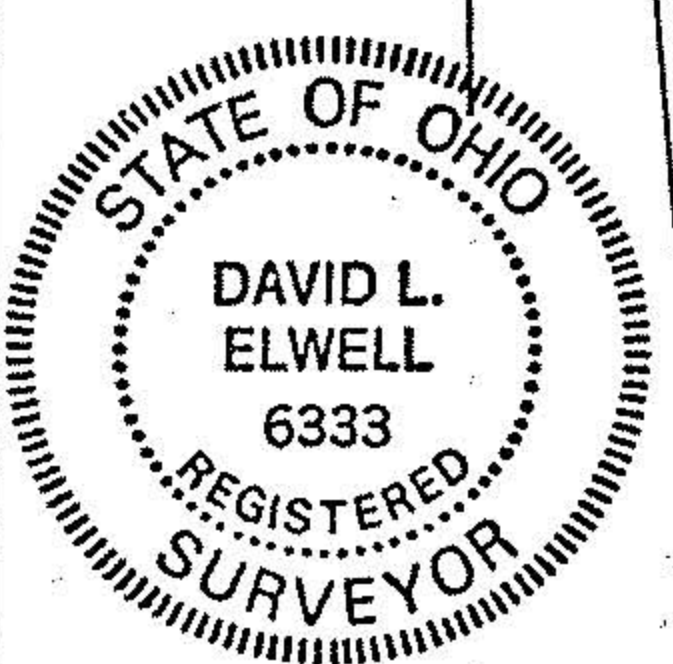
APRIL 15, 1992

PREPARED BY

REV. 8-26-92

KS ASSOCIATES INC.
CONSULTING ENGINEERS & SURVEYORS

91-386
(77-13)



David L. Elwell
REG. SURV. NO. 6333