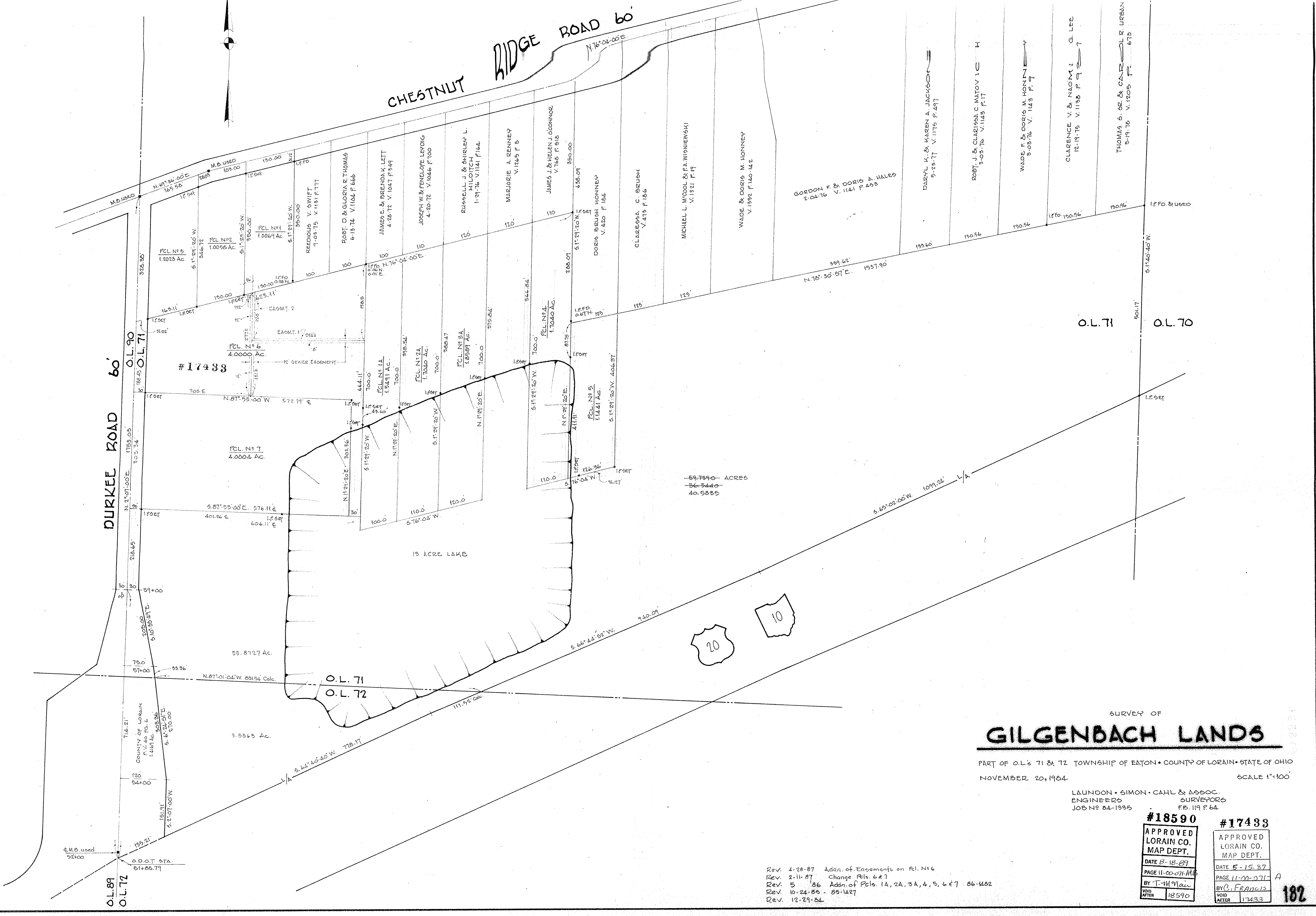




CHESTNUT RIDGE ROAD 60'

DURKEE ROAD 60'



59.7590 ACRES
56.5440
40.5835

O.L. 71 O.L. 70

GILGENBACH LANDS

PART OF O.L.'s 71 & 72 TOWNSHIP OF EATON • COUNTY OF LORAIN • STATE OF OHIO
NOVEMBER 20, 1984 SCALE 1"=100'

LAUNDON • SIMON • CAHL & ASSOC.
ENGINEERS SURVEYORS
JOB NO 84-1335 FEB. 119 P. 64

#18590
APPROVED
LORAIN CO.
MAP DEPT.
DATE 8-18-89
PAGE 11-00-071-A
BY T. M. Main
VOID AFTER 18590

#17433
APPROVED
LORAIN CO.
MAP DEPT.
DATE 5-15-87
PAGE 11-00-071-A
BY C. Francis
VOID AFTER 17433

REV. 4-28-87 Addn. of Easements on Pl. No 6
REV. 2-11-87 Change Pcls. 6 & 7
REV. 5-86 Addn. of Pcls. 1A, 2A, 3A, 4, 5, 6 & 7 86-482
REV. 10-24-85 - 85-1427
REV. 12-29-84