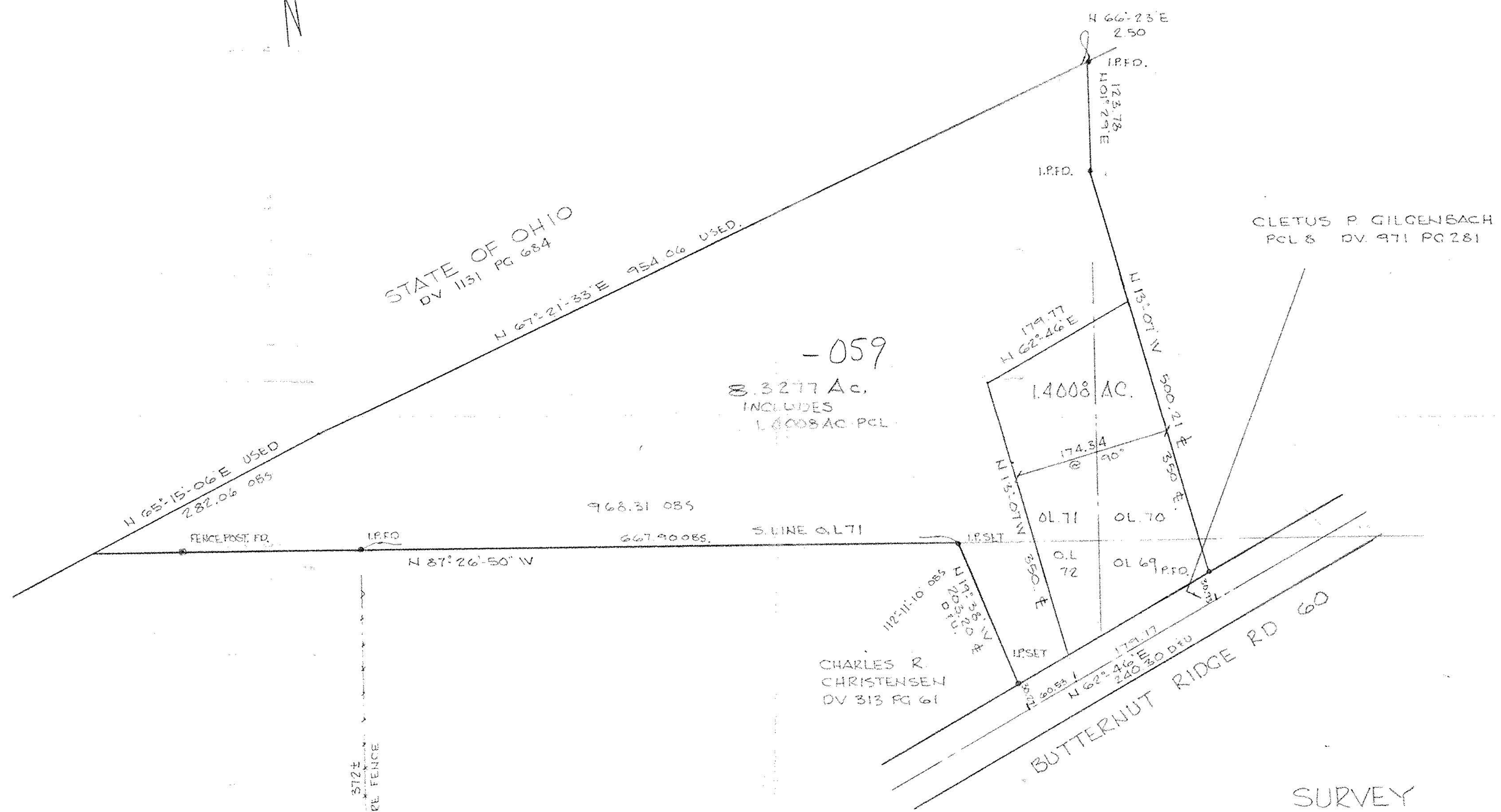




DATE: MAY 1990
SCALE: 1" = 100'



-059

8.3277 AC.
INCLUDES
1.4008 AC. PCL.

BUTTERNUT RIDGE RD 60

SURVEY
OF PART OF
ORIGINAL EATON
TVP LOTS 69, 70, 71 & 72

PROPOSED SPLIT

#18994 VOID

COUNTY OF LORAIN STATE OF OHIO

PREPARED FOR
JEFF MOULD
9405 ISLAND RD.

ACREAGE ON 8.3277 AC. PCL

O.L. 69	0.29 AC.
O.L. 70	0.52 AC.
O.L. 71	7.00 AC.
O.L. 72	0.51 AC.

ACREAGE ON 1.4008 AC. PCL

O.L. 69	0.29 AC.
O.L. 70	0.45 AC.
O.L. 71	0.44 AC.
O.L. 72	0.22 AC.



APPROVED
LORAIN CO.
MAP DEPT.
DATE 6/21/90
PAGE 11-00-071-B
BY T. Hollis & FC
VOID AFTER 18994

REVISED: JUNE 6, 1990

8647