

LAUNDON - HUFFMAN - SIMON
 CIVIL ENGINEERS - SURVEYORS
 200 ROBINSON BUILDING ANNEX
 401 W. BROAD ST. ELYRIA, OHIO

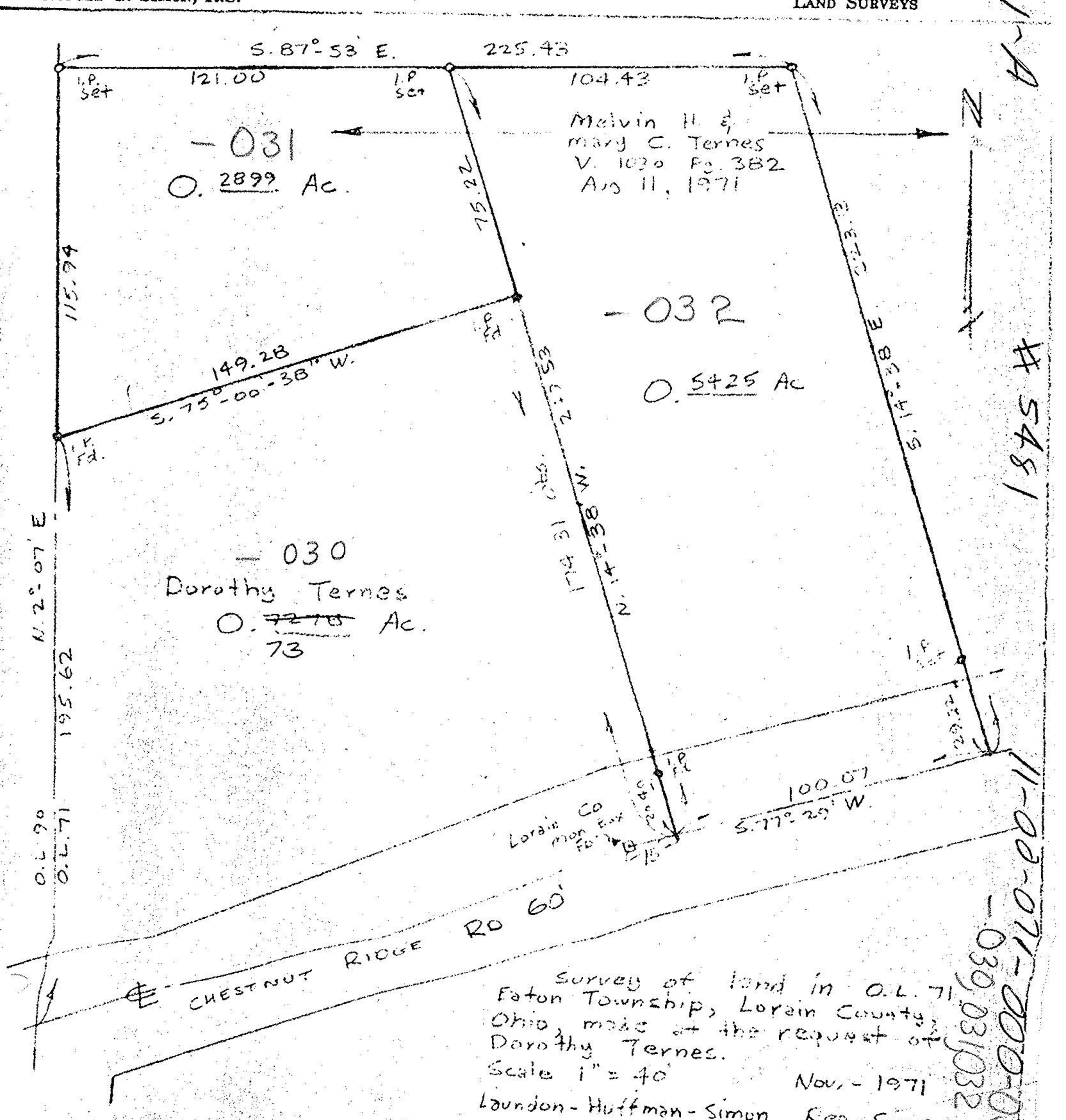
5481

11-00-071-A

5481

THOMAS W. LAUNDON, P.E.
 DAVID C. HUFFMAN, P.E.
 RODGER G. SIMON, R.S.

MUNICIPAL ENGINEERING
 SUBDIVISIONS
 LAND SURVEYS



Survey of land in O.L. 71
 Eaton Township, Lorain County,
 Ohio, made at the request of
 Dorothy Ternes.
 Scale 1" = 40'
 Nov. - 1971
 Laundon-Huffman-Simon Reg. Surveyors

11-00-071-000-03
 -030,031,032