

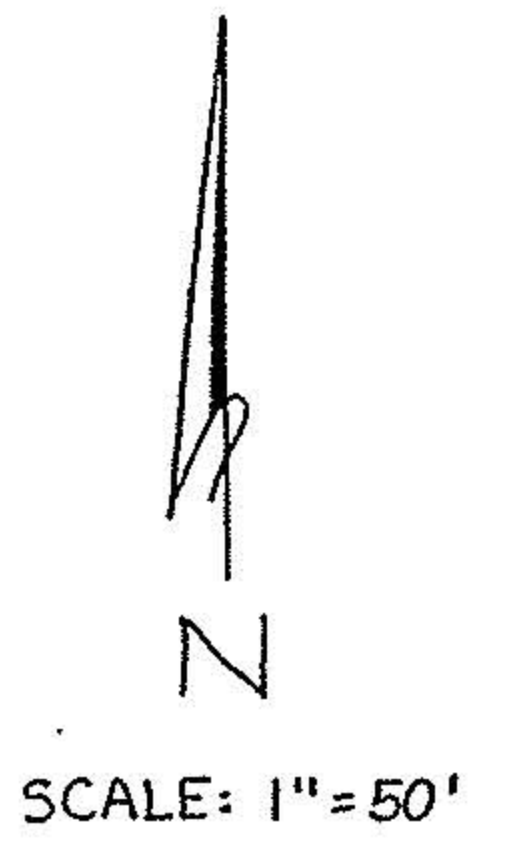
A R=25.00'  
Δ=90°  
A=39.27'  
C=35.36'  
N-44°18'-W

B R=25.00'  
Δ=90°  
A=39.27'  
C=35.36'  
N-45°42'-E

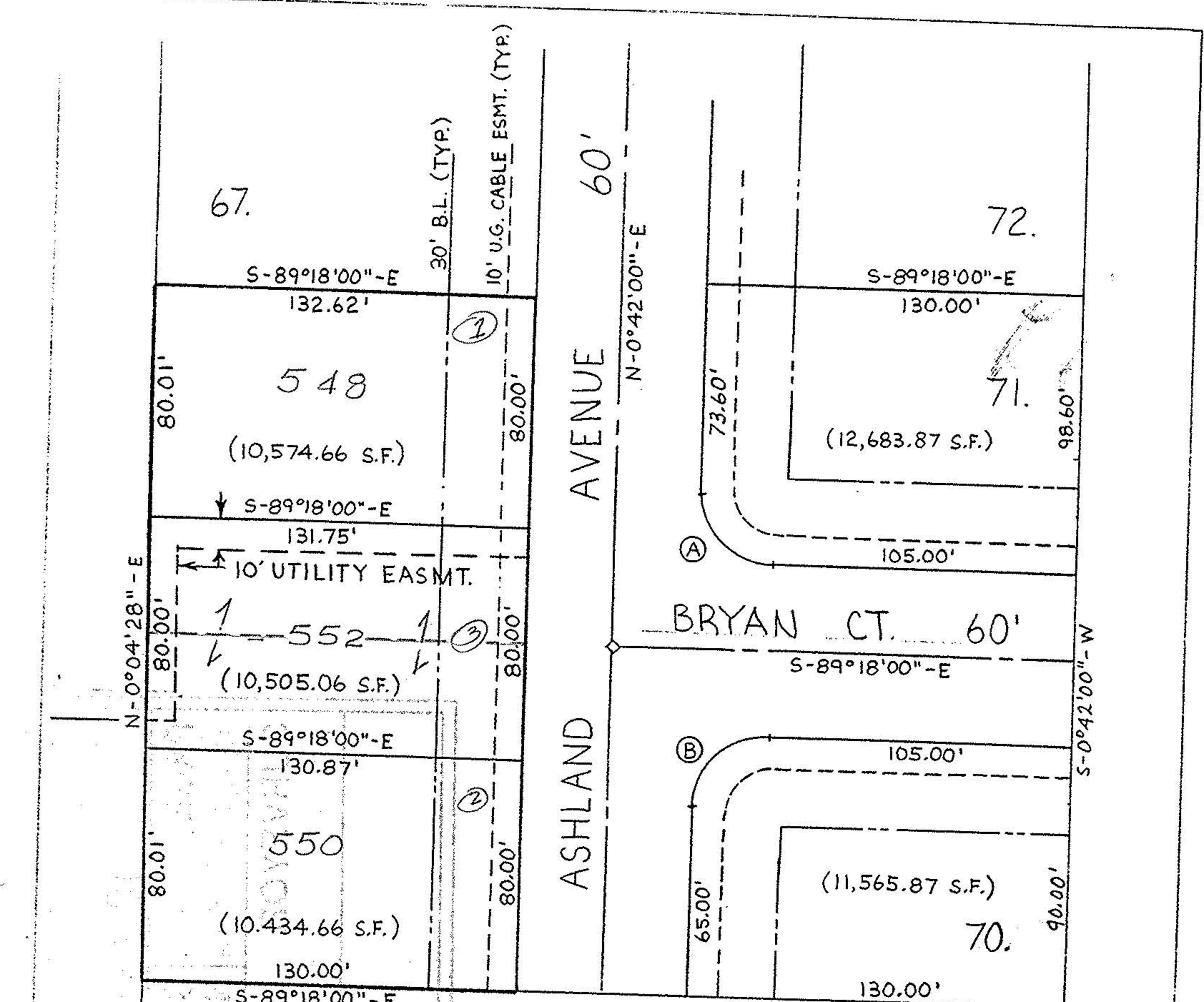
UNIVERSITY OAKS  
SUB. NO. 3  
P.V. 47 P. 8 & 9

SURVEY  
MAP OF RESUBDIVISION  
OF SUBLOTS 68 & 69  
AND PART OF VACATED CAROL LANE  
IN UNIVERSITY OAKS SUB. NO. 2  
P.V. 44 PP. 32-33

PREPARED BY: **KS ASSOCIATES INC.**  
ENGINEERS ~ SURVEYORS



*David L. Elwell*  
REG. SURV. NO. 6333



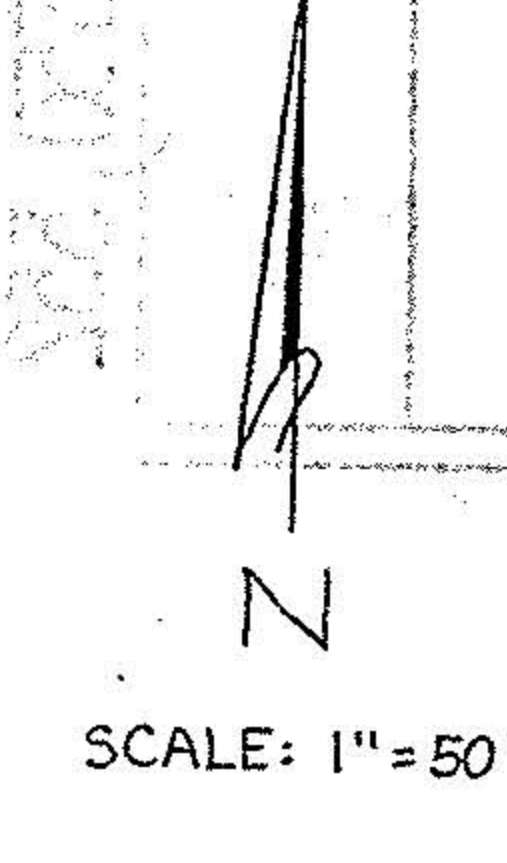
A R=25.00'  
Δ=90°  
A=39.27'  
C=35.36'  
N-44°18'-W

B R=25.00'  
Δ=90°  
A=39.27'  
C=35.36'  
N-45°42'-E

UNIVERSITY OAKS  
SUB. NO. 3  
P.V. 47 P. 8 & 9

10-00-005-101-  
MAP OF RESUBDIVISION  
OF SUBLOTS 68 & 69  
AND PART OF VACATED CAROL LANE  
IN UNIVERSITY OAKS SUB. NO. 2  
P.V. 44 PP. 32-33

PREPARED BY: **KS ASSOCIATES INC.**  
ENGINEERS ~ SURVEYORS



*David L. Elwell*  
REG. SURV. NO. 6333



20828  
APPROVED  
LORAIN CO.  
MAP DEPT.  
DATE 5-4-94  
PAGE 10-00-005 A  
BY CAROLYN FRANCIS  
VOID AFTER # 20828