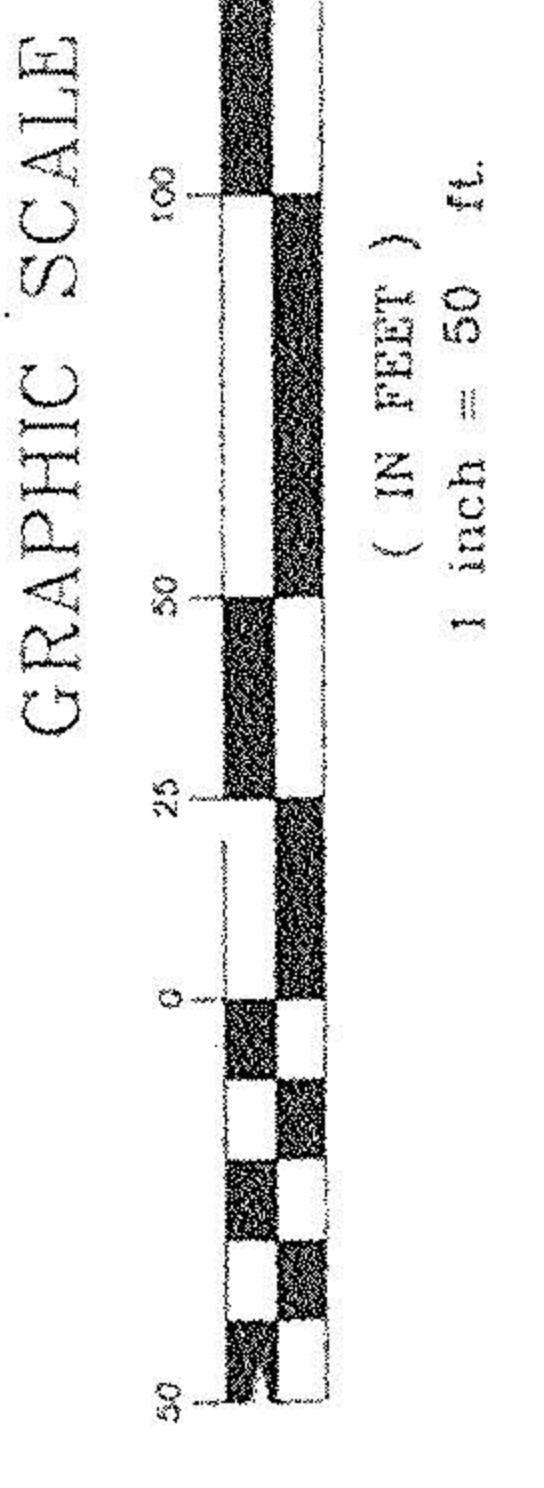
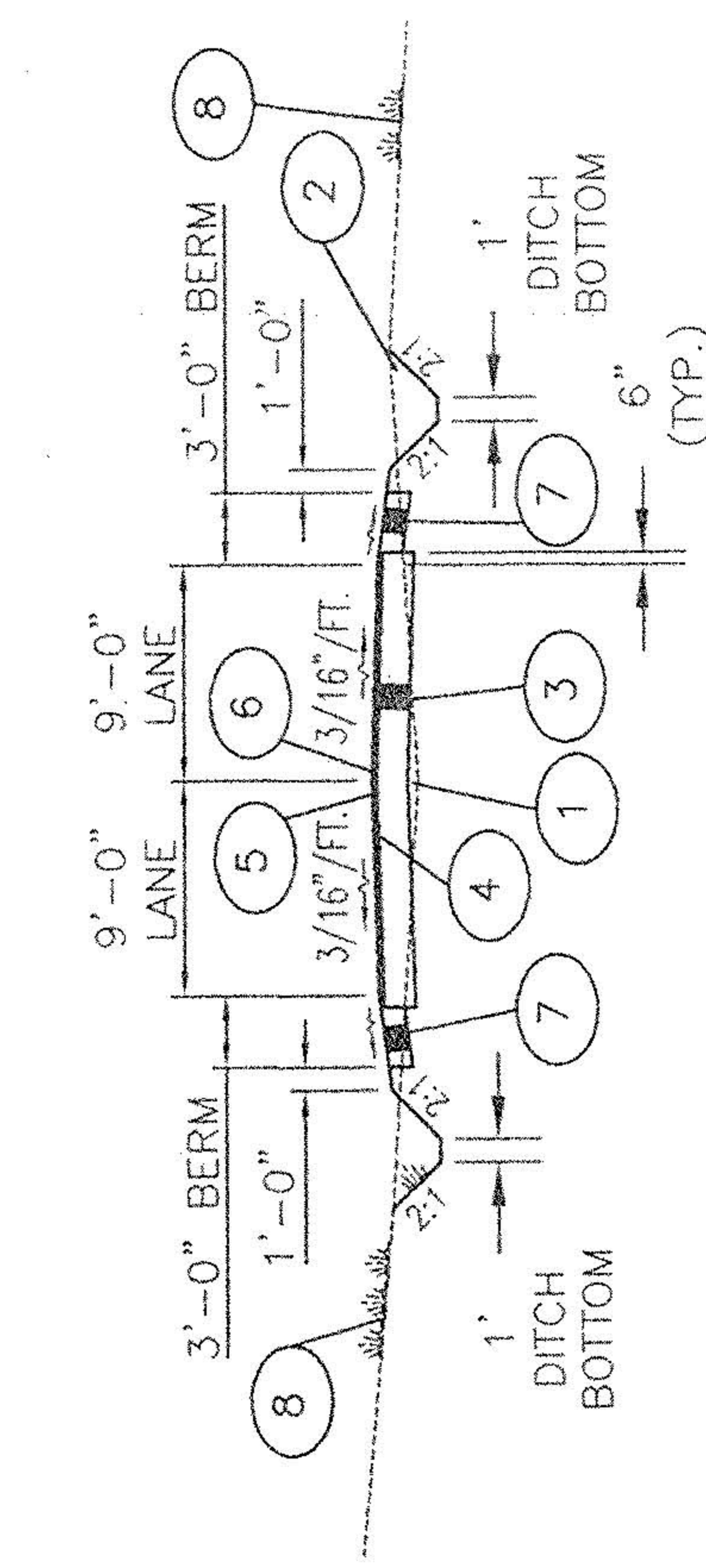
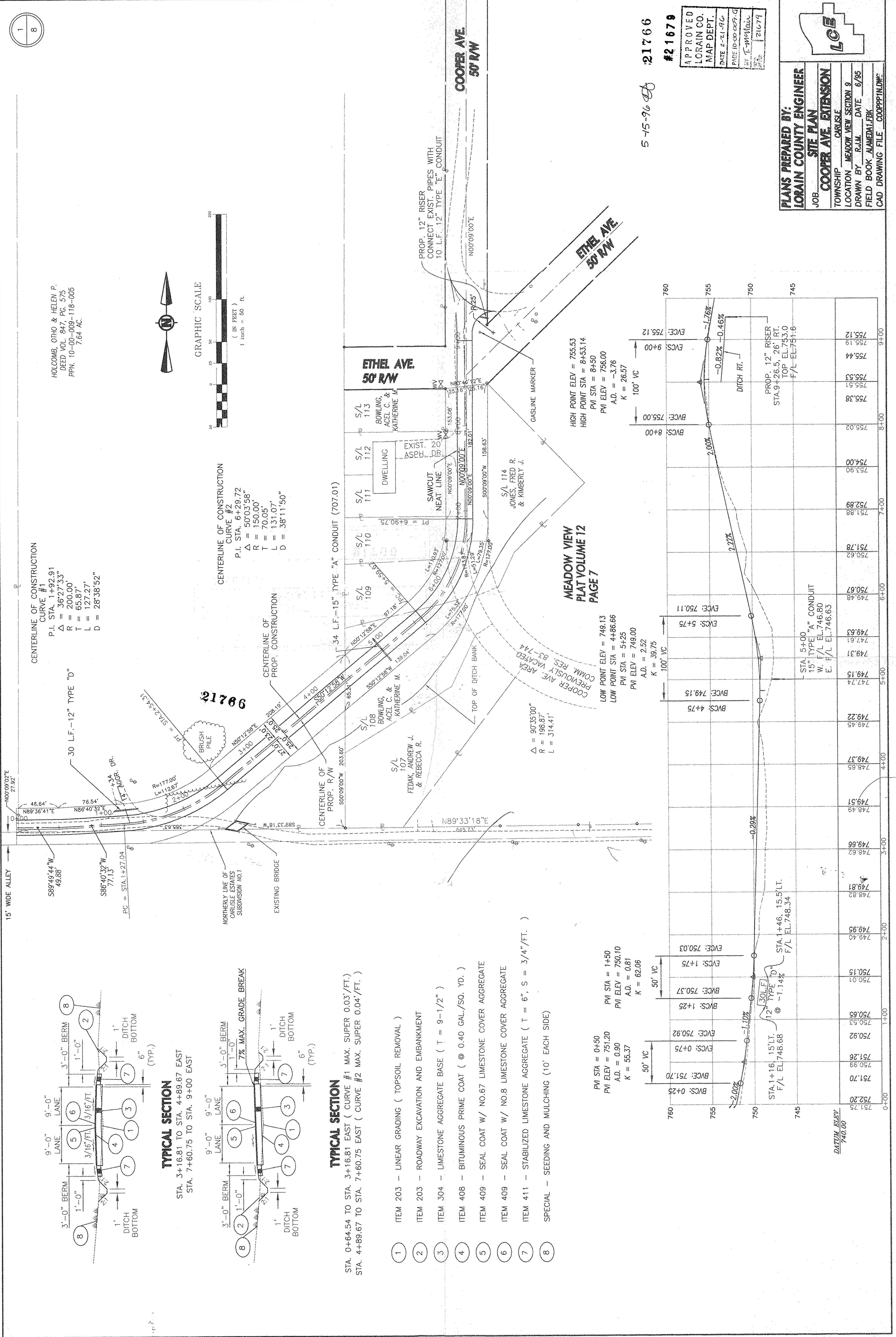


HOLCOMB, OTHO & HELEN P.
DEED VOL 847, PG. 575
PPN: 10-00-009-118-005
7.64 AC.

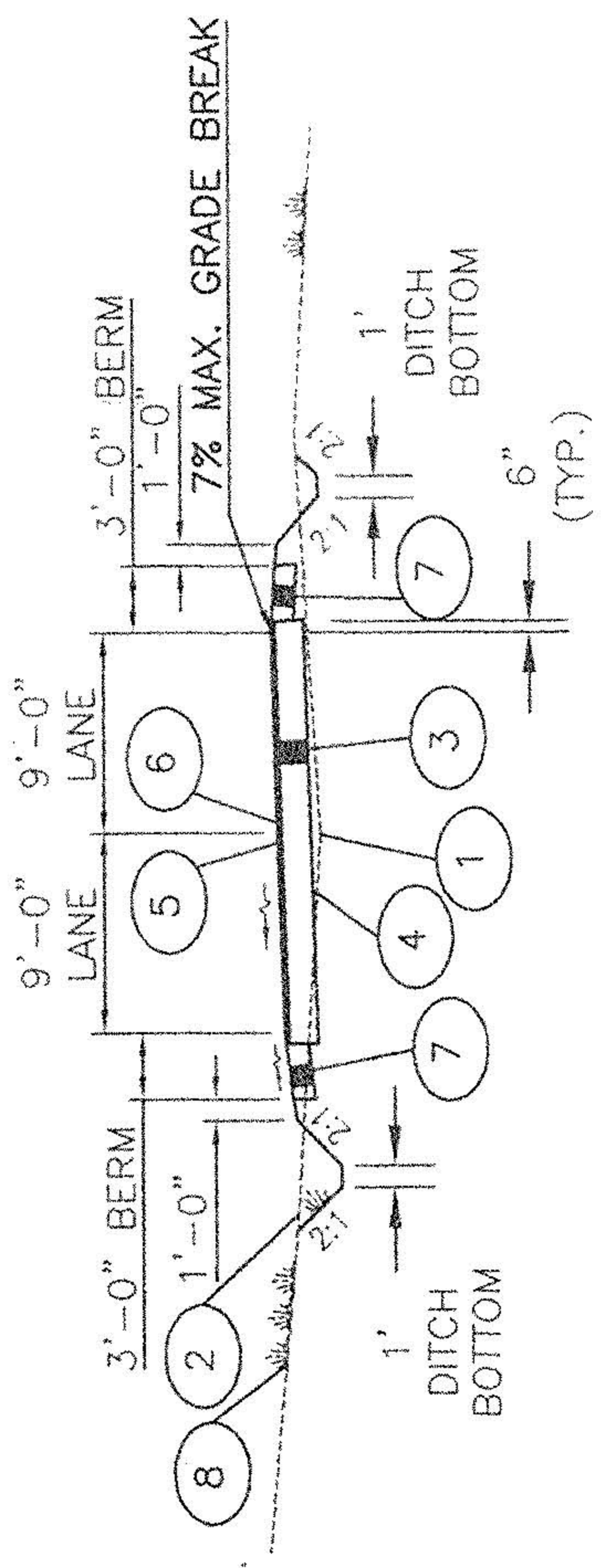


**CENTERLINE OF CONSTRUCTION
CURVE #1**
P.I. STA. 1+92.91
 $\Delta = 36^{\circ}27'33''$
R = 200.00'
T = 65.87'
L = 127.27'
D = 28'38.52"

**CENTERLINE OF CONSTRUCTION
CURVE #2**
P.I. STA. 6+29.72
 $\Delta = 50^{\circ}03'58''$
R = 150.00'
T = 70.05'
L = 131.07'
D = 38'11.50"



TYPICAL SECTION
STA. 3+16.81 TO STA. 4+89.67 EAST
STA. 7+60.75 TO STA. 9+00 EAST



TYPICAL SECTION
STA. 0+64.54 TO STA. 3+16.81 EAST (CURVE #1 MAX. SUPER 0.03'/FT.)
STA. 4+89.67 TO STA. 7+60.75 EAST (CURVE #2 MAX. SUPER 0.04'/FT.)

- 1 ITEM 203 - LINEAR GRADING (TOPSOIL REMOVAL)
- 2 ITEM 203 - ROADWAY EXCAVATION AND EMBANKMENT
- 3 ITEM 304 - LIMESTONE AGGREGATE BASE (T = 9-1/2")
- 4 ITEM 408 - BITUMINOUS PRIME COAT (@ 0.40 GAL./SQ. YD.)
- 5 ITEM 409 - SEAL COAT W/ NO.67 LIMESTONE COVER AGGREGATE
- 6 ITEM 409 - SEAL COAT W/ NO.8 LIMESTONE COVER AGGREGATE
- 7 ITEM 411 - STABILIZED LIMESTONE AGGREGATE (T = 6", S = 3/4"/FT.)
- 8 SPECIAL - SEEDING AND MULCHING (10' EACH SIDE)

PVI STA = 0+50
PVI ELEV = 751.20
A.D. = 0.90
K = 55.37

LOW POINT STA = 749.13
LOW POINT ELEV = 4+86.66
PVI STA = 5+25
PVI ELEV = 749.00
A.D. = 2.52
K = 39.75

HIGH POINT STA = 8+50
HIGH POINT ELEV = 755.53
PVI STA = 8+50
PVI ELEV = 756.00
A.D. = -3.76
K = 26.57

STATION	ELEVATION	TYPE
751.75	751.75	DATEM ELEV
752.20	752.20	
751.70	751.70	
750.99	750.99	
751.26	751.26	
750.92	750.92	
750.53	750.53	
750.65	750.65	
750.01	750.01	
750.15	750.15	
749.40	749.40	
749.95	749.95	
748.82	748.82	
749.81	749.81	
748.62	748.62	
749.51	749.51	
749.37	749.37	
749.45	749.45	
749.22	749.22	
749.15	749.15	
749.31	749.31	
747.61	747.61	
749.63	749.63	
749.48	749.48	
750.67	750.67	
750.62	750.62	
751.78	751.78	
751.88	751.88	
752.89	752.89	
753.90	753.90	
754.00	754.00	
755.02	755.02	
755.38	755.38	
755.51	755.51	
755.53	755.53	
755.44	755.44	
755.19	755.19	
755.12	755.12	

5-15-96
#21766
#21679

APPROVED
LORAIN CO.
MAP DEPT.
DATE 2-21-96
PAGE 10-00-009-D
BY T. McLean
DATE 2-21-96

PLANS PREPARED BY:
LORAIN COUNTY ENGINEER

JOB:
SITE PLAN
COOPER AVE. EXTENSION

TOWNSHIP:
CARLISLE

LOCATION:
MEADOW VIEW SECTION 9

DRAWN BY:
R.J.M.

DATE:
6/95

FIELD BOOK:
ALAMEDA1.FBK

CAD DRAWING FILE:
COOPPPIN.DWG