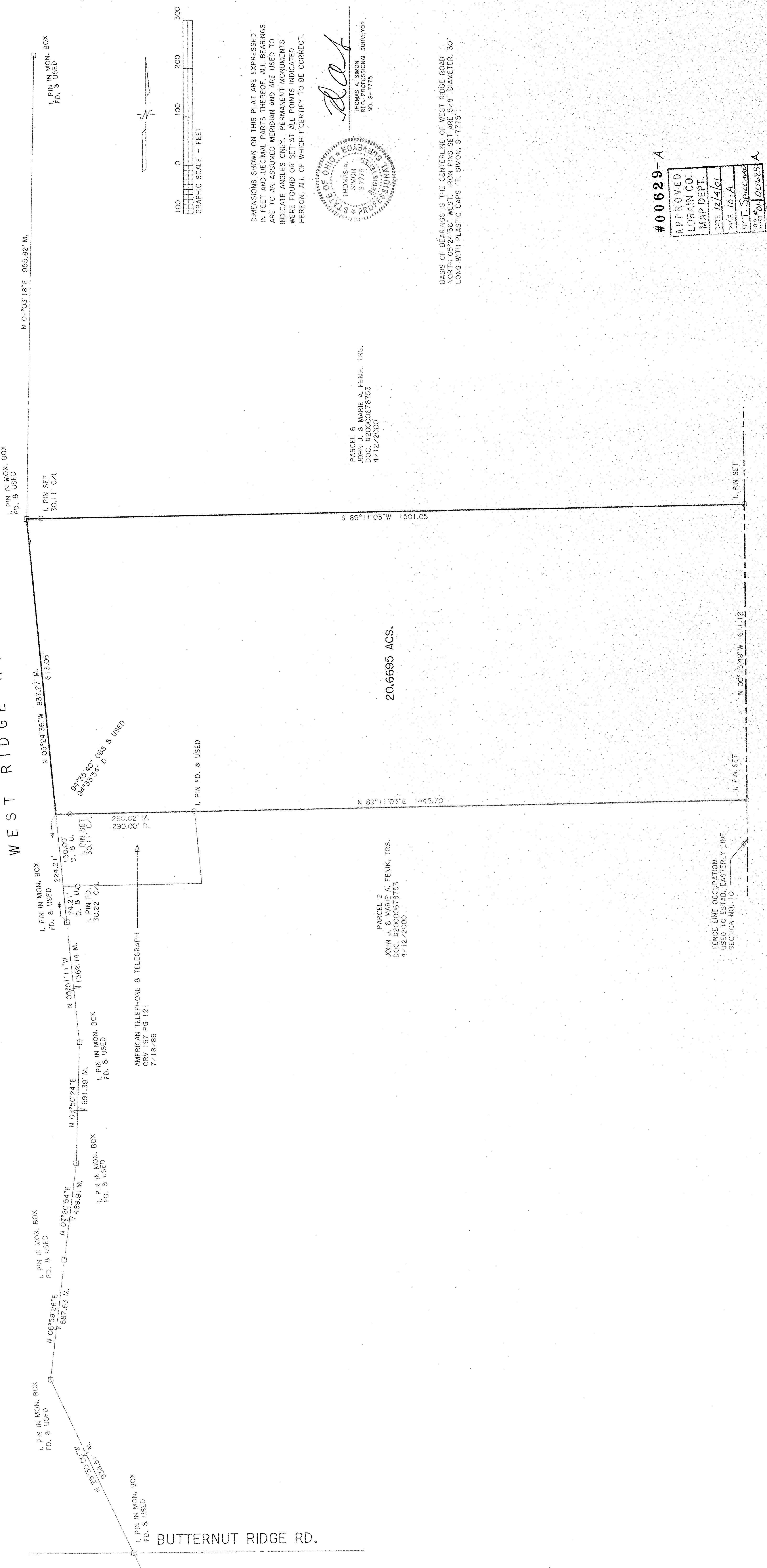


WEST RIDGE ROAD (60')



N 01°03'18"E 955.82 M.

I. PIN IN MON. BOX  
FD. & USED

I. PIN SET  
30.11' C/L

N 08°24'36"W 817.27 M.

613.06

90°35'50"  
84°33'54" D & USED

I. PIN SET  
30.11' C/L

I. PIN FD.  
30.22' C/L

I. PIN IN MON. BOX  
FD. & USED

224.21'

150.00'

74.21'

I. PIN SET  
D. & U.

I. PIN SET  
30.11' C/L

I. PIN FD.  
30.22' C/L

I. PIN IN MON. BOX  
FD. & USED

N 05°11'11"W  
1362.14 M.

I. PIN IN MON. BOX  
FD. & USED

N 01°50'24"E  
691.39 M.

I. PIN IN MON. BOX  
FD. & USED

N 07°20'54"E  
489.91 M.

I. PIN IN MON. BOX  
FD. & USED

N 08°59'26"E  
687.63 M.

I. PIN IN MON. BOX  
FD. & USED

N 15°39'05"  
IN U.S. 100-532 N

I. PIN IN MON. BOX  
FD. & USED

I. PIN IN MON. BOX  
FD. & USED

I. PIN IN MON. BOX  
FD. & USED

I. PIN IN MON. BOX  
FD. & USED

I. PIN IN MON. BOX  
FD. & USED

AMERICAN TELEPHONE & TELEGRAPH  
ORV 197 PG 121  
7-18-89

290.02 M.  
290.00' D.

I. PIN FD. & USED

I. PIN SET

I. PIN SET

I. PIN SET

I. PIN SET

I. PIN SET

I. PIN SET

I. PIN SET

I. PIN SET

I. PIN SET

I. PIN SET

I. PIN SET

I. PIN SET

I. PIN SET

I. PIN SET

I. PIN SET

I. PIN SET

I. PIN SET

I. PIN SET

I. PIN SET

I. PIN SET

I. PIN SET

I. PIN SET

I. PIN SET

I. PIN SET

I. PIN SET

I. PIN SET

I. PIN SET

I. PIN SET

I. PIN SET

I. PIN SET

I. PIN SET

I. PIN SET

I. PIN SET

I. PIN SET

I. PIN SET

I. PIN SET

BUTTERNUT RIDGE RD.

S 89°11'03"W 1501.05'

20.6695 ACS.

N 89°11'03"E 1445.70'

N 00°13'49"W 611.12'

I. PIN SET

I. PIN SET

I. PIN SET

I. PIN SET

I. PIN SET

I. PIN SET

I. PIN SET

I. PIN SET

I. PIN SET

I. PIN SET

I. PIN SET

I. PIN SET

I. PIN SET

I. PIN SET

I. PIN SET

I. PIN SET

I. PIN SET

I. PIN SET

I. PIN SET

I. PIN SET

I. PIN SET

I. PIN SET

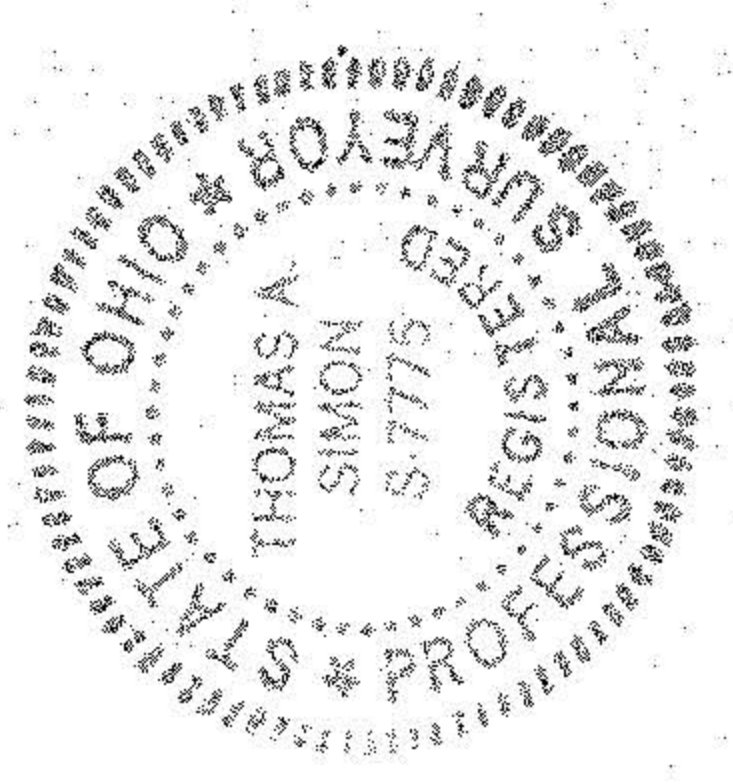
I. PIN SET

I. PIN SET

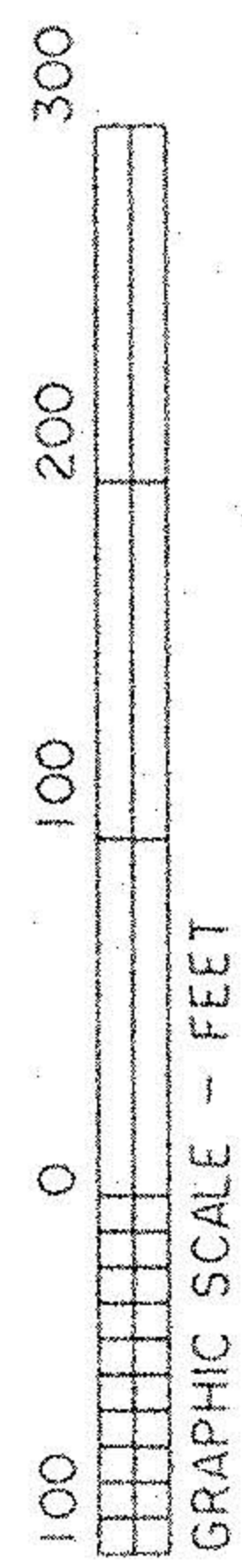
PARCEL 6 MARIE A. FENIK, TRS.  
DOC. H2000678753  
4/12/2000

PARCEL 2 JOHN J. & MARIE A. FENIK, TRS.  
DOC. H2000678753  
4/12/2000

DIMENSIONS SHOWN ON THIS PLAT ARE EXPRESSED  
IN FEET AND DECIMAL PARTS THEREOF. ALL BEARINGS  
ARE TO AN ASSUMED MERIDIAN AND ARE USED TO  
INDICATE ANGLES ONLY. PERMANENT MONUMENTS  
WERE FOUND OR SET AT ALL POINTS INDICATED  
HEREON, ALL OF WHICH I CERTIFY TO BE CORRECT.

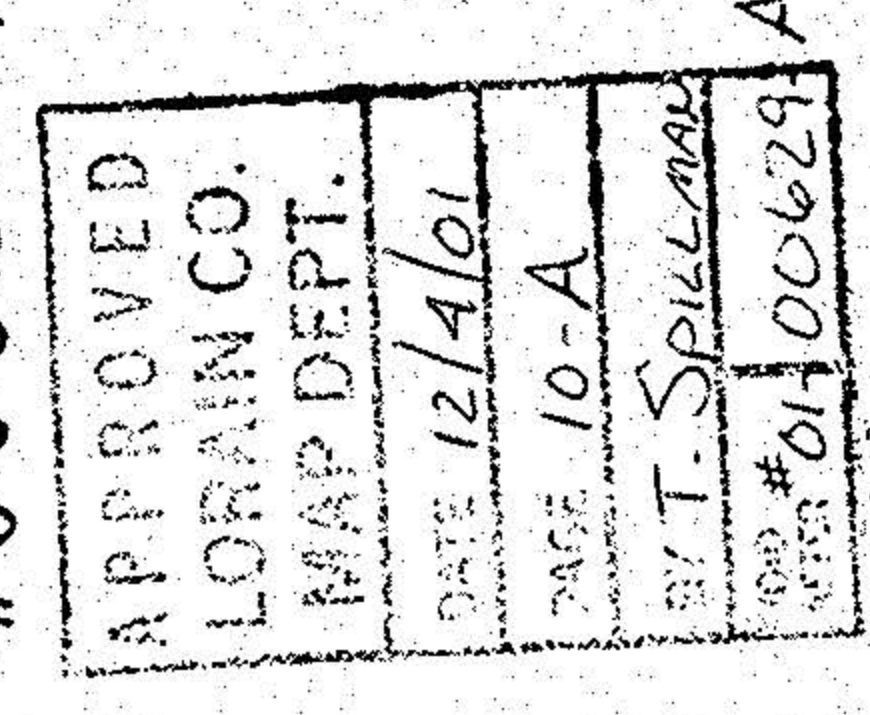


THOMAS A. SIMON  
REG. PROFESSIONAL SURVEYOR  
NO. S-7775



BASIS OF BEARINGS IS THE CENTERLINE OF WEST RIDGE ROAD  
NORTH 08°24'36" WEST. IRON PINS SET ARE 5/8" DIAMETER, 30"  
LONG WITH PLASTIC CAPS "T. SIMON, S-7775".

#00629-A.



PLAT OF SURVEY

FOR

LAURA KLINECT TRUST  
ROGER A. KLINECT, SUCCESSOR TRUSTEE

BEING KNOWN AS PART OF ORIGINAL CARLISLE TOWNSHIP  
SECTION NO. 10  
COUNTY OF LORAIN STATE OF OHIO  
OCTOBER, 2001 SCALE: 1" = 100'

THOMAS SIMON & ASSOCIATES, INC.  
PROFESSIONAL LAND SURVEYORS  
CORNERSTONE CORNER PROFESSIONAL CENTER  
SOUTH CENTER RIDGE ROAD  
NORTH RIDGEVILLE, OHIO 44039  
TEL: 440.327-2925  
FAX: 440.327-2564