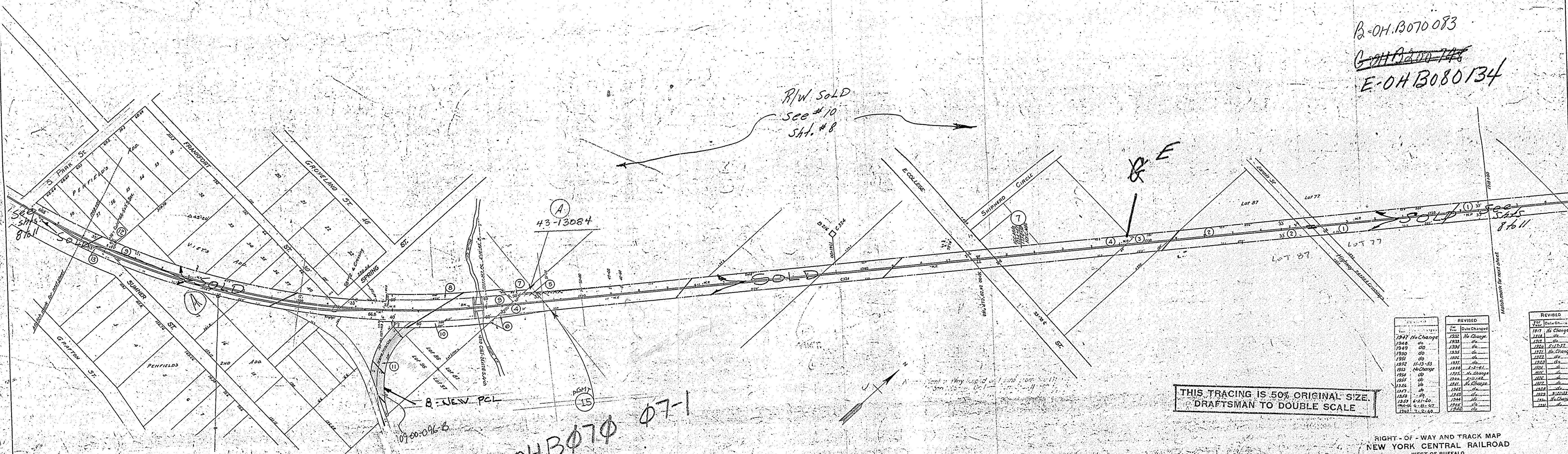


OWNER	VALUATION SUR. SHEET	REAL ESTATE
500	SECTION DIV. NUMBER	REGION
	2070 - 9	7

8.17 AC. ROW THIS SHT.
13,600 # PCL B

B-OH B070083
~~C-OH B001748~~
E-OH B080134

R/W SOLD
See #10
SHT. #8



THIS TRACING IS 50% ORIGINAL SIZE.
DRAFTSMAN TO DOUBLE SCALE

Year	Revised	Year	Revised
1947 No Change	1932 No Change	1917 No Change	
1948 do	1933 do	1918 do	
1949 do	1934 do	1919 S. 1/2 E.	
1950 do	1935 do	1920 No Change	
1951 do	1936 do	1921 do	
1952 11-13-53	1937 do	1922 do	
1953 No Change	1938 do	1923 do	
1954 do	1939 do	1924 do	
1955 do	1940 do	1925 do	
1956 do	1941 do	1926 do	
1957 do	1942 do	1927 do	
1958 do	1943 do	1928 do	
1959 6-21-60	1944 do	1929 do	
1960 6-21-60	1945 do	1930 do	
1961 7-2-60	1946 do	1931 do	
	1947 do		

RIGHT-OF-WAY AND TRACK MAP
NEW YORK CENTRAL RAILROAD
WEST OF BUFFALO
OPERATED BY
THE NEW YORK CENTRAL RAILROAD CO.
TOLEDO DIVISION
NORWALK BRANCH
ELYRIA, O. - OBERLIN, O.

FROM STA. 1710 + 00 TO STA. 1768 + 00
SCALE 1" = 100'
OFFICE OF VALUATION ENGINEERS
CLEVELAND, O.

THIS MAP IS PRIMARY SHEET NO. 3 OF THE SERIES OF MAPS PREPARED IN ACCORDANCE WITH THE INTERSTATE COMMERCE COMMISSION'S SPECIFICATIONS FOR MAPS AND PROFILES, DATED FEB. 1, 1914, COVERING VALUATION SECTION 247, NEW YORK CENTRAL RAILROAD.
H.B. [Signature]
ASSISTANT VALUATION ENGINEER

V.207
9

Lorain County, Ohio.