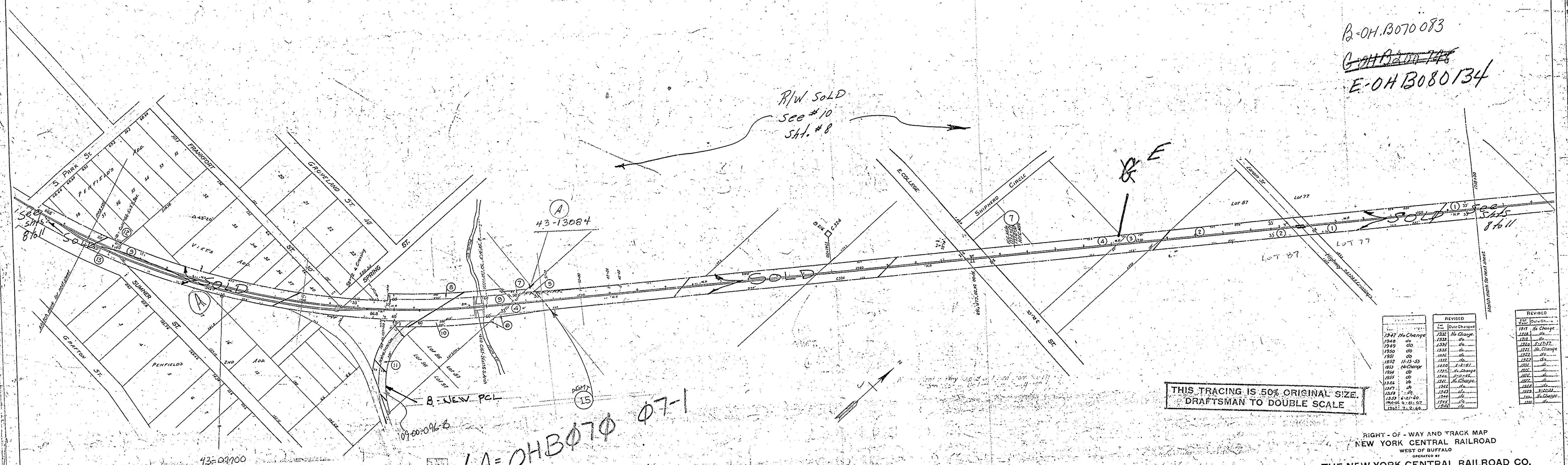


OWNER	VALUATION SECTION	SUB DIV.	SHEET NUMBER	REAL ESTATE REGION
500	2070	-	9	7

R.P.  
 8.17 AC. ROW THIS SHT.  
 13,600 # PCL B

B-OH B070083  
~~G-OH B000748~~  
 E-OH B080134

R/W SOLD  
 see #10  
 SHT. #8



THIS TRACING IS 50% ORIGINAL SIZE.  
 DRAFTSMAN TO DOUBLE SCALE

REVISED	REVISION	REVISED	REVISION
1947	No Change	1952	No Change
1948	do	1953	do
1949	do	1954	do
1950	do	1955	do
1951	do	1956	do
1952	11-15-53	1957	do
1953	No Change	1958	do
1954	do	1959	do
1955	do	1960	do
1956	do	1961	do
1957	do	1962	do
1958	do	1963	do
1959	do	1964	do
1960	do	1965	do
1961	do	1966	do
1962	do	1967	do
1963	do	1968	do
1964	do	1969	do
1965	do	1970	do

A = OH B070083  
 B = NEW PCL  
 43-02900

RIGHT-OF-WAY AND TRACK MAP  
 NEW YORK CENTRAL RAILROAD  
 WEST OF BUFFALO  
 OPERATED BY  
 THE NEW YORK CENTRAL RAILROAD CO.  
 TOLEDO DIVISION  
 NORWALK BRANCH  
 ELYRIA, O. - OBERLIN, O.

THIS MAP IS PRIMARY SHEET NO. 9 OF THE SERIES OF MAPS PREPARED IN ACCORDANCE WITH THE INTERSTATE COMMERCE COMMISSION'S SPECIFICATIONS FOR MAPS AND PROFILES, DATED FEB. 1, 1914, GOVERNING VALUATION SECTION 307, NEW YORK CENTRAL RAILROAD.  
 H.B. [Signature]  
 ASSISTANT VALUATION ENGINEER

FROM STA. 1718 + 00 TO STA. 1768 + 00  
 SCALE 1" = 100'  
 AS OF JUNE 30, 1917  
 OFFICE OF VALUATION ENGINEER  
 CLEVELAND, O.