

# BENTLEY LOT SPLIT

## APPROVAL

THIS PLAT APPROVED BY THE LORAIN COUNTY  
PLANNING COMMISSION  
THIS \_\_\_\_\_ DAY OF \_\_\_\_\_, 19\_\_\_\_.

\_\_\_\_\_  
CHAIRMAN  
\_\_\_\_\_  
SECRETARY

BEING PART OF ORIGINAL RUSSIA TOWNSHIP LOT NO. 98  
SITUATED IN ...

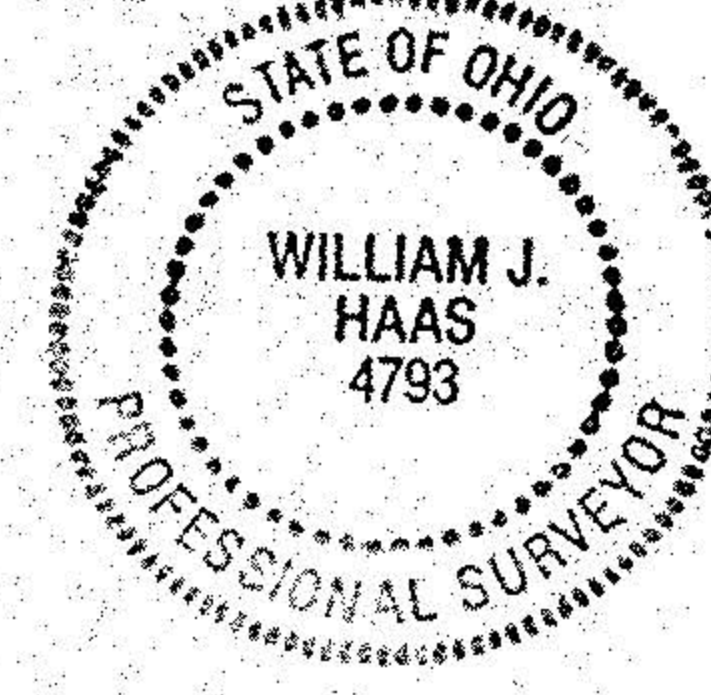
RUSSIA TOWNSHIP  
SCALE 1" = 60'

LORAIN COUNTY OHIO  
JUNE, 1994

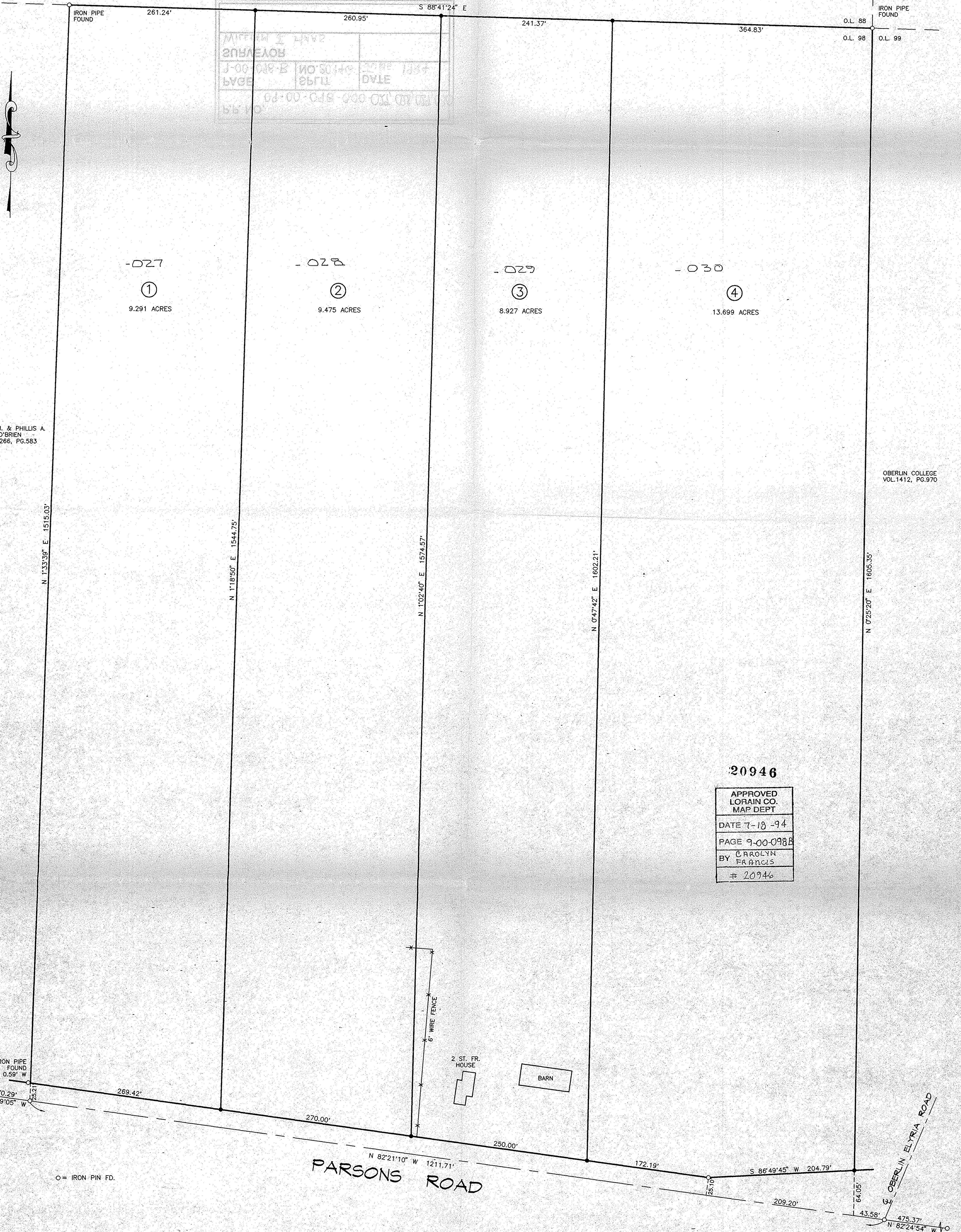
## CERTIFICATION

DISTANCES ARE SHOWN IN FEET AND DECIMALS.  
BEARINGS ARE BASED ON AN ASSUMED MERIDIAN.  
IRON PINS ARE SET AT ALL POINTS SHOWN THUS  
ALL OF WHICH I BELIEVE TO BE CORRECT.

*William J. Haas*  
WILLIAM J. HAAS, P.S. NO. 4793



PETER M. SCHWINN  
VOL. 1172, PG. 637



20946

APPROVED LORAIN CO. MAP DEPT
DATE 7-18-94
PAGE 9-00-098B
BY CAROLYN FRANCIS
# 20946

○ = IRON PIN FD.