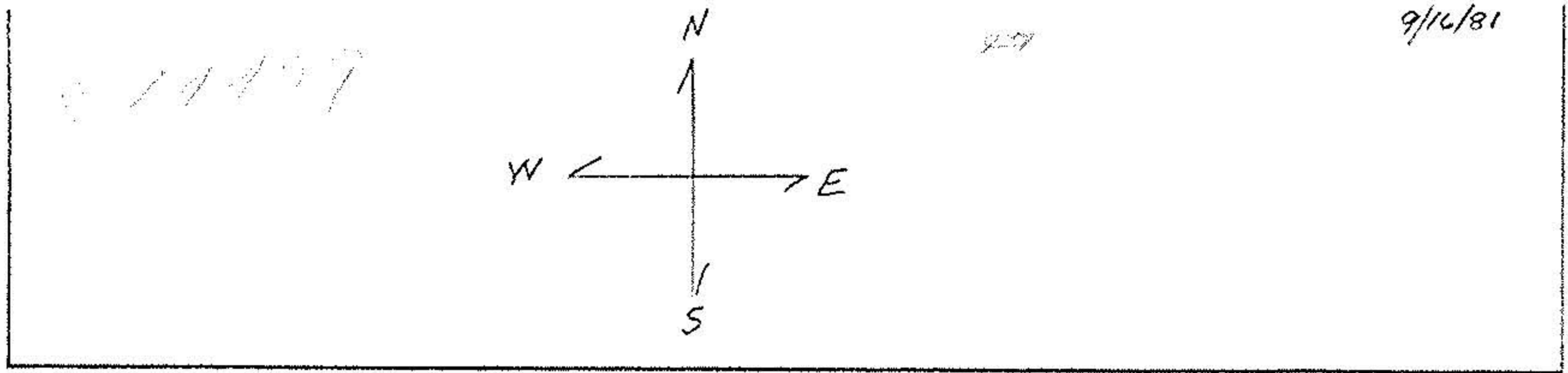
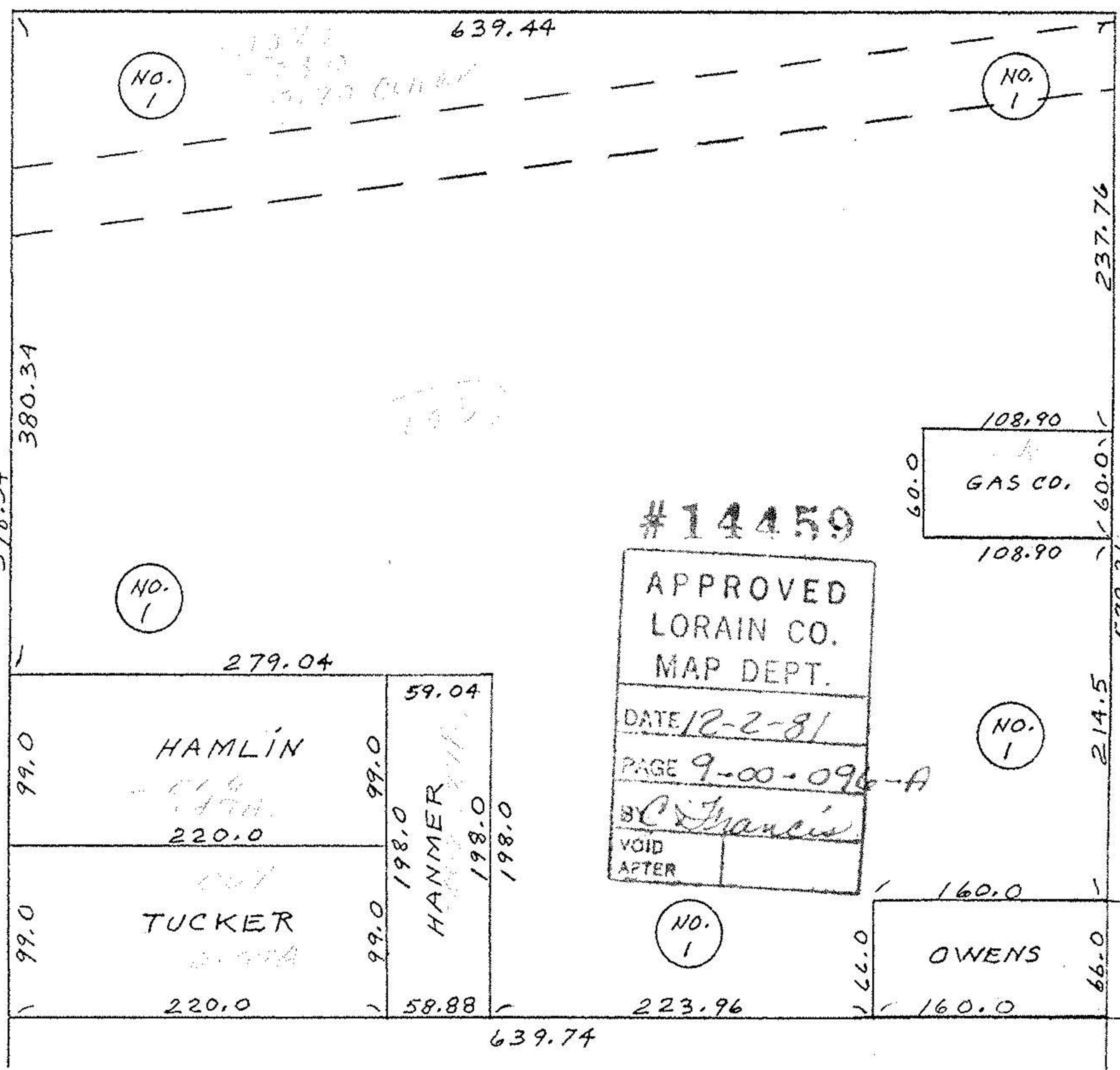


9/16/81



14449

EDISON ST. 30.0



#14459

APPROVED  
LORAIN CO.  
MAP DEPT.

DATE 12-2-81

PAGE 9-00-096-A

BY Francis

VOID AFTER

- A. PARCEL NO. 1 - MAIN TO PLEASANT • 299,071.42 SQ FT. = 6.8657 ACRES
- B. PARCEL NO. 2 - MAIN/WEST SIDE • 101,839.00 SQ FT. = 2.3380 ACRES
- C. PARCEL NO. 3 - PLEASANT/EAST SIDE • 92,766.00 SQ FT. = 2.1296 ACRES

TOTAL ACREAGE 11.3333 ACRES