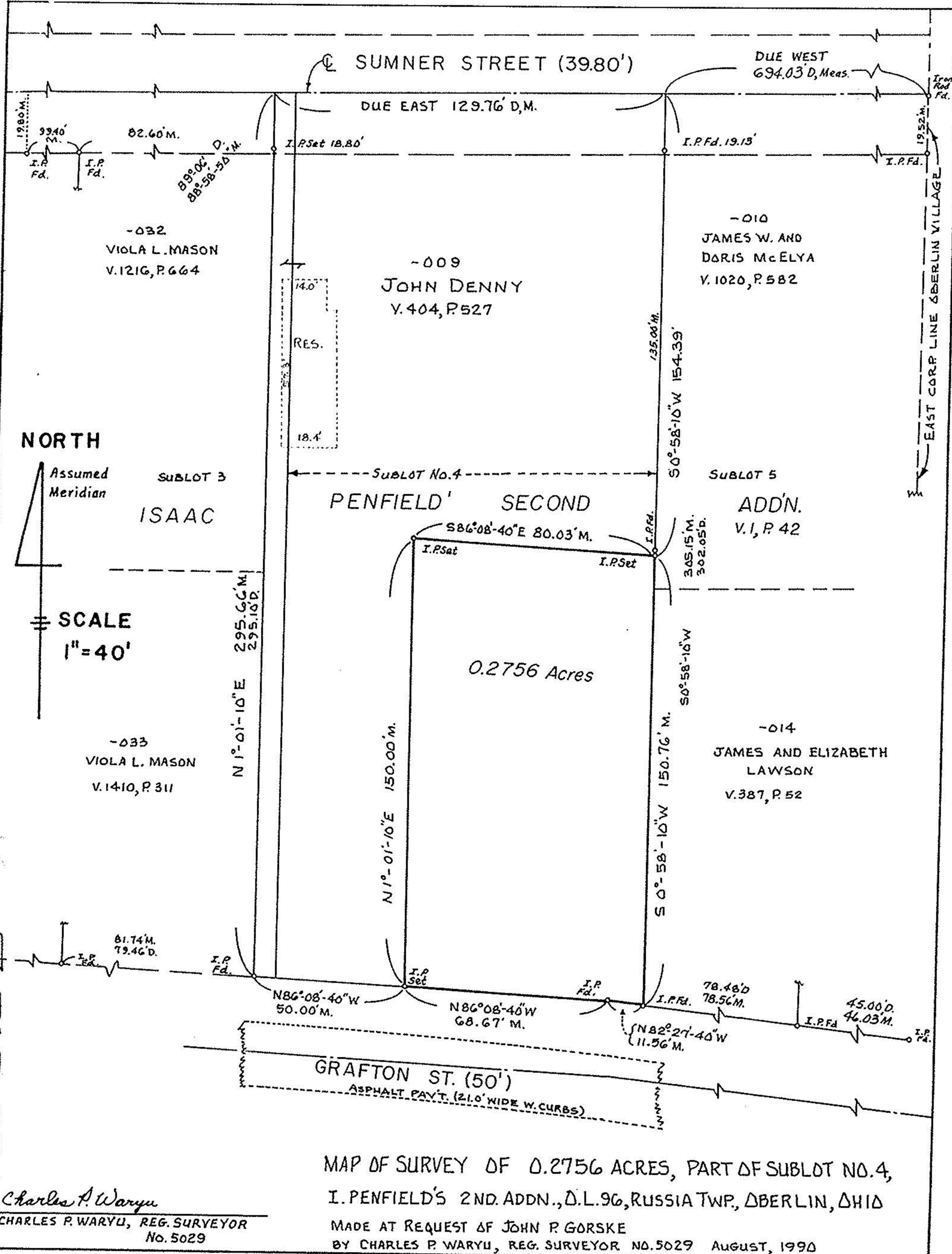


9-00-096-109-009



MAP OF SURVEY OF 0.2756 ACRES, PART OF SUBLOT NO. 4,
 I. PENFIELD'S 2ND. ADDN., D.L. 96, RUSSIA TWP., DBERLIN, OHIO
 MADE AT REQUEST OF JOHN P. GORSKE
 BY CHARLES P. WARYU, REG. SURVEYOR NO. 5029 August, 1990

Charles P. Waryu
 CHARLES P. WARYU, REG. SURVEYOR
 No. 5029

T.M. = 9-00-096-B 09-00-096-109-009