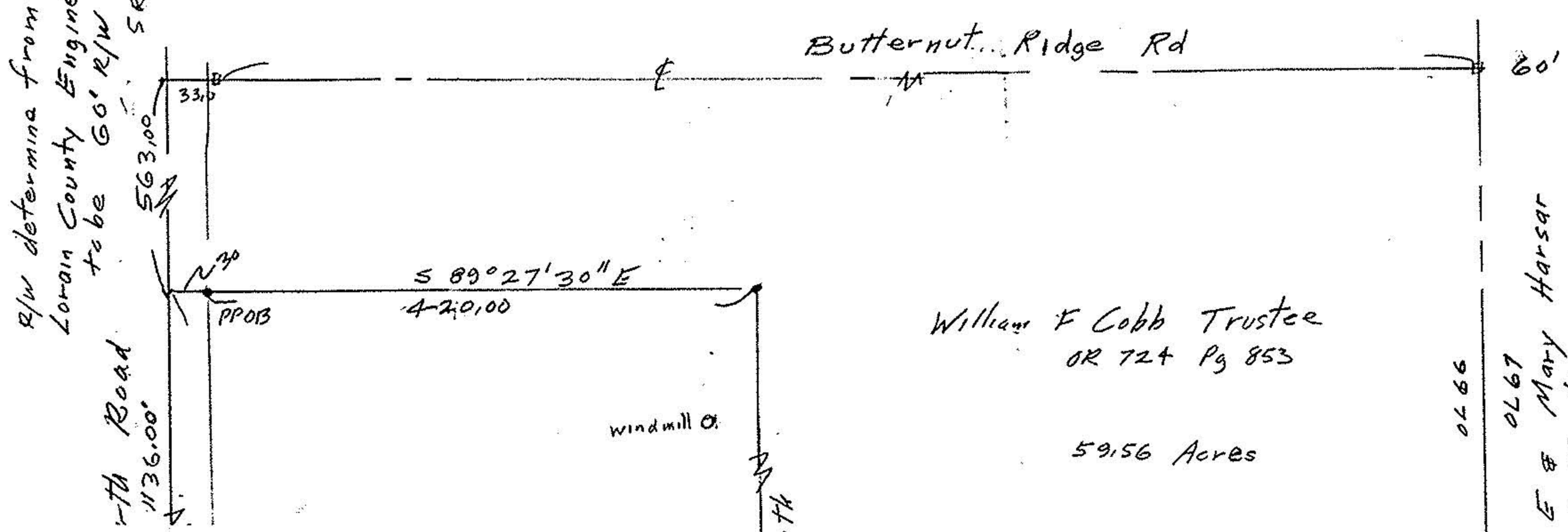


R/W determined from
Lorain County Engineers Dep.
to be 60' R/W Aug 10, 1938
SR 58



322-2456

Hot Line 1-800-HHW-LINE
Printed with soy ink on recycled paper.

3 Acres

529.00'
Due South

William F Cobb Trustee
OR 724 Pg 853

59.56 Acres

Henry E & Mary Harsar
Co Trustee
OR 381 Pg 35



Survey of Parcel Split
Original Russia Township Lot 66
Lorain County Ohio
Scale 1"=100' Aug 10, 1938
Set 6, 98



#22733

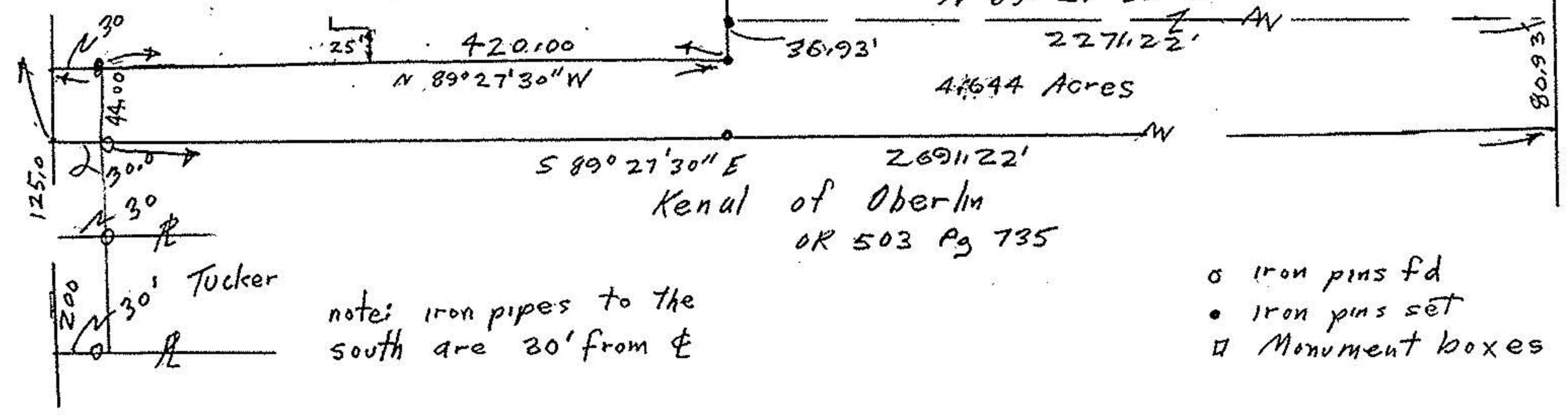
APPROVED
LORAIN CO.
MAP DEPT.

DATE 12-23-98

PAGE 9-00-066-A

BY T. Spill

22733



note: iron pipes to the
south are 30' from E

- o iron pins fd
- iron pins set
- Monument boxes

