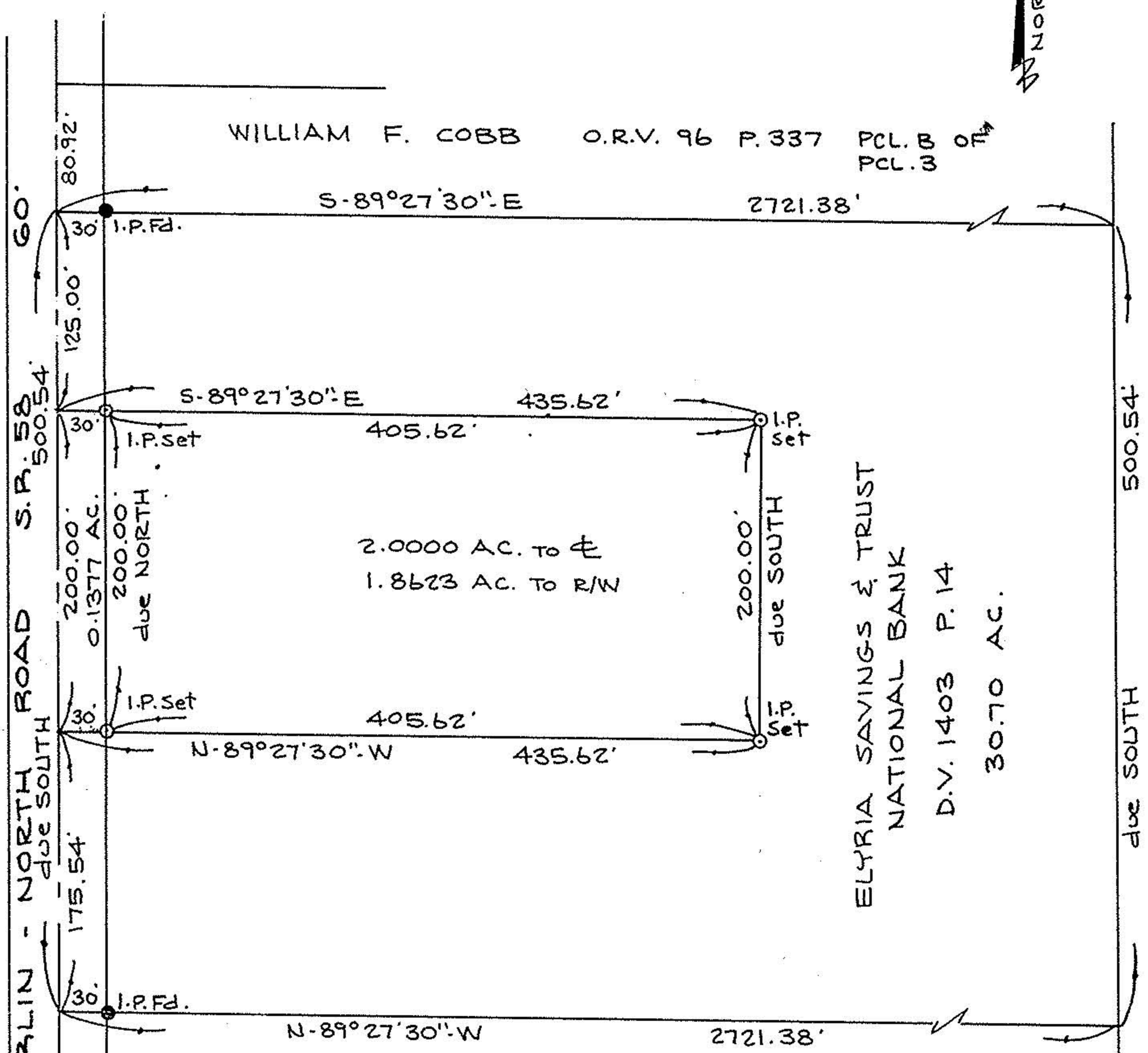


9-00-066-13 & A #18271 09-00-066-000



WILLIAM F. COBB O.R.V. 96 P. 337 PCL. B OF PCL. 3

S-89°27'30"E 435.62'

2.0000 AC. TO ϕ
1.8623 AC. TO R/W

ELYRIA SAVINGS & TRUST
NATIONAL BANK
D.V. 1403 P. 14
30.70 AC.

JOSEPH ZBYDNOWSKI D.V. 1290 P. 270

#18271

APPROVED
LORAIN CO.
MAP DEPT.

BOUNDARY SURVEY

PART OF RUSSIA TWP. ORIG. LOT 156

TOWNSHIP OF RUSSIA COUNTY OF LORAIN

STATE OF OHIO



David L. Elwell
REG. SURV. NO. 6333
12-1-88

PREPARED BY
KS ASSOCIATES INC.
ENGINEERS SURVEYORS

PAGE	900.0066
DATE	12-28-88
BY	Carol Francis
VOID AFTER #	18271

SCALE: 1" = 100'

88-487