

DETAIL: I.P. FOUND
SCALE: 1" = 30'

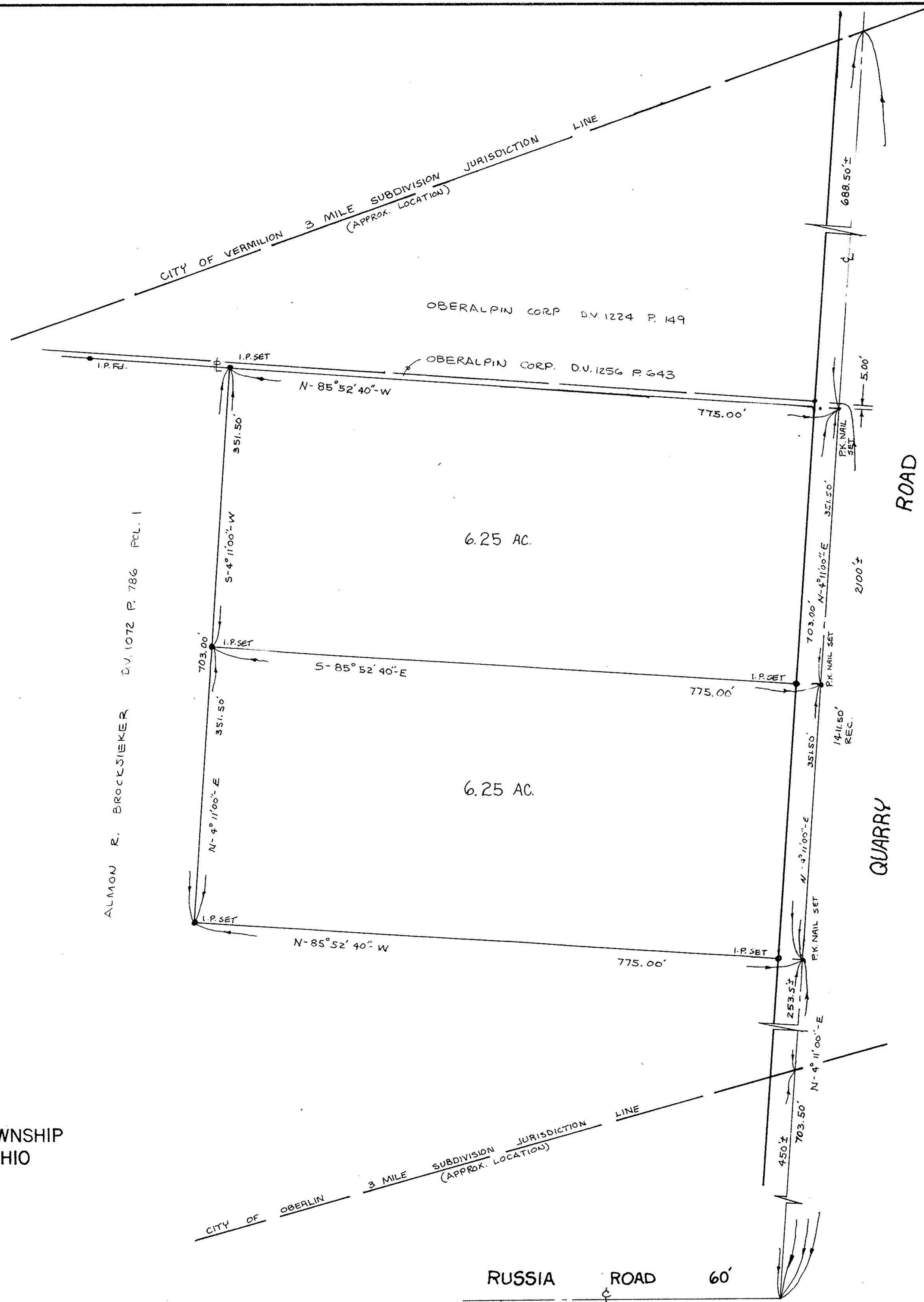
NOTE: SUBDIVISION JURISDICTION LINE LOCATIONS ARE APPROXIMATE
(SCALED FROM LORAIN CO. REGIONAL PLANNING COMMISSION 3 MI. LIMIT MAP)

BOUNDARY SURVEY

PART OF ORIGINAL LOT II RUSSIA TOWNSHIP
COUNTY OF LORAIN STATE OF OHIO

SCALE: 1" = 100' MARCH 7, 1986

KLEINOEDER-SCHMIDT
and ASSOCIATES
ENGINEERS — SURVEYORS — CONSULTANTS IN LAND PLANNING
ELYRIA OHIO



#16664

APPROVED
LORAIN CO.
MAP DEPT.
DATE 4-1-86
PAGE 9-A
BY T. McMain

