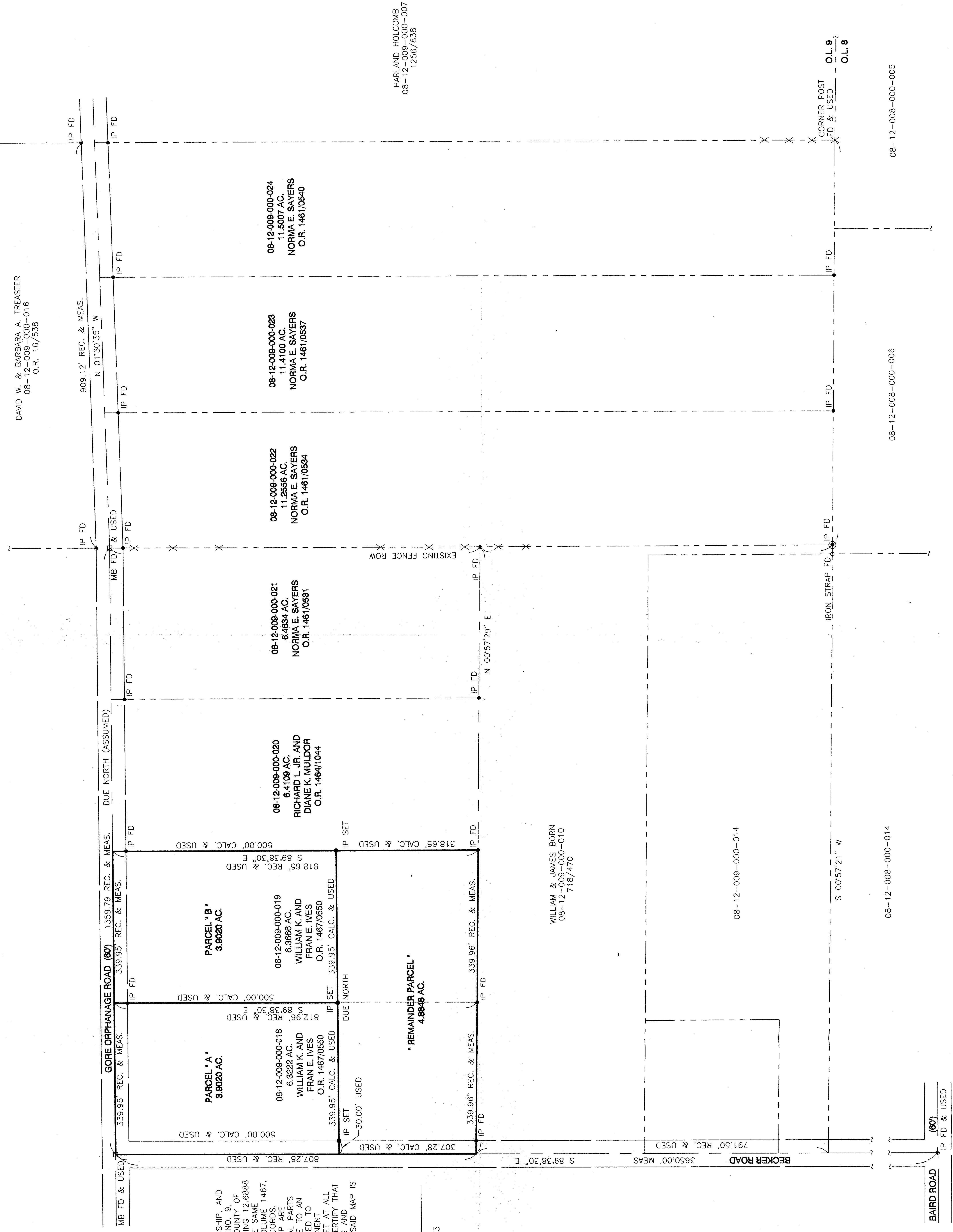
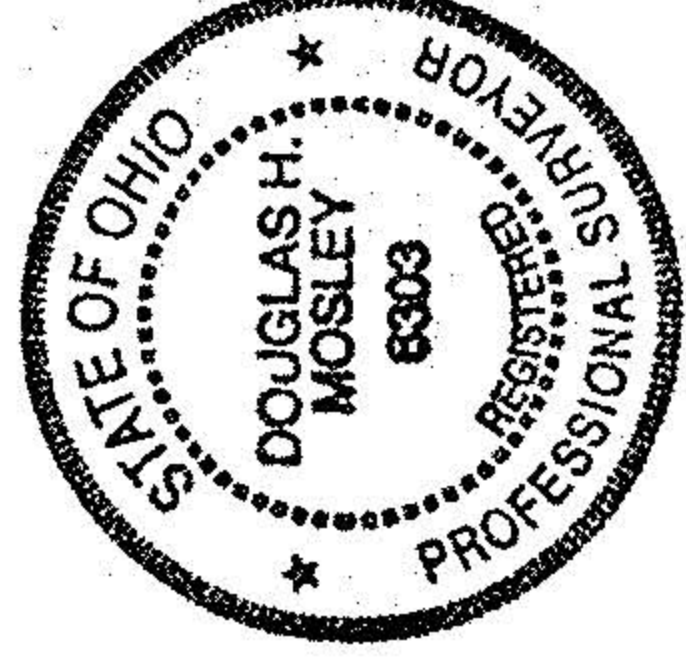


22271
 APPROVED
 LORAIN CO.
 MAP DEPT
 DATE 9/11/97
 PAGE 3-E
 BY K. Colbert
 #22271

BEING PART OF HENRIETTA TOWNSHIP, AND KNOWN AS BEING PART OF LOT NO. 9, TRACT 12 IN SAID TOWNSHIP, COUNTY OF LORAIN, STATE OF OHIO CONTAINING 12.6888 ACRES OF LAND, AND BEING THE SAME TRACT AS DESCRIBED IN O.R. VOLUME 1467, PAGE 0550, LORAIN COUNTY RECORDS. DIMENSIONS SHOWN ON THIS MAP ARE EXPRESSED IN FEET AND DECIMAL PARTS THEREOF AND ALL BEARINGS ARE TO AN ASSUMED MERIDIAN AND ARE USED TO INDICATE ANGLES ONLY. PERMANENT MONUMENTS WERE FOUND OR SET AT ALL POINTS INDICATED. I HEREBY CERTIFY THAT I HAVE SURVEYED THE PREMISES AND I HAVE PREPARED THIS MAP AND THAT SAID MAP IS CORRECT.

Douglas H. Mosley
 DOUGLAS H. MOSLEY
 REGISTERED SURVEYOR NO. 6303



HARLAND HOLCOMB
 08-12-009-000-007
 1256/838

DAVID W. & BARBARA A. TREASTER
 08-12-009-000-016
 O.R. 16/538

WILLIAM & JAMES BORN
 08-12-009-000-010
 7187/470

08-12-009-000-014
 3650.00' MEAS

08-12-008-000-014
 S 00°57'21" W

08-12-008-000-006
 909.12' REC. & MEAS.

08-12-008-000-024
 11.5007 AC.
 NORMA E. SAYERS
 O.R. 1461/0540

08-12-008-000-023
 11.4100 AC.
 NORMA E. SAYERS
 O.R. 1461/0537

08-12-008-000-022
 11.2556 AC.
 NORMA E. SAYERS
 O.R. 1461/0534

08-12-008-000-021
 6.4634 AC.
 NORMA E. SAYERS
 O.R. 1461/0531

08-12-008-000-020
 6.4109 AC.
 RICHARD L. JR. AND
 DIANE K. MULDOR
 O.R. 1464/1044

08-12-009-000-019
 6.3666 AC.
 WILLIAM K. AND
 FRAN E. IVES
 O.R. 1467/0550

08-12-009-000-018
 6.3222 AC.
 WILLIAM K. AND
 FRAN E. IVES
 O.R. 1467/0550

08-12-009-000-017
 6.3222 AC.
 WILLIAM K. AND
 FRAN E. IVES
 O.R. 1467/0550

08-12-009-000-016
 6.3222 AC.
 WILLIAM K. AND
 FRAN E. IVES
 O.R. 1467/0550

08-12-009-000-015
 6.3222 AC.
 WILLIAM K. AND
 FRAN E. IVES
 O.R. 1467/0550

08-12-009-000-014
 6.3222 AC.
 WILLIAM K. AND
 FRAN E. IVES
 O.R. 1467/0550

08-12-009-000-013
 6.3222 AC.
 WILLIAM K. AND
 FRAN E. IVES
 O.R. 1467/0550

08-12-009-000-012
 6.3222 AC.
 WILLIAM K. AND
 FRAN E. IVES
 O.R. 1467/0550

08-12-009-000-011
 6.3222 AC.
 WILLIAM K. AND
 FRAN E. IVES
 O.R. 1467/0550

08-12-009-000-010
 6.3222 AC.
 WILLIAM K. AND
 FRAN E. IVES
 O.R. 1467/0550

08-12-009-000-009
 6.3222 AC.
 WILLIAM K. AND
 FRAN E. IVES
 O.R. 1467/0550

08-12-009-000-008
 6.3222 AC.
 WILLIAM K. AND
 FRAN E. IVES
 O.R. 1467/0550

08-12-009-000-007
 6.3222 AC.
 WILLIAM K. AND
 FRAN E. IVES
 O.R. 1467/0550

08-12-009-000-006
 6.3222 AC.
 WILLIAM K. AND
 FRAN E. IVES
 O.R. 1467/0550

08-12-009-000-005
 6.3222 AC.
 WILLIAM K. AND
 FRAN E. IVES
 O.R. 1467/0550

08-12-009-000-004
 6.3222 AC.
 WILLIAM K. AND
 FRAN E. IVES
 O.R. 1467/0550

08-12-009-000-003
 6.3222 AC.
 WILLIAM K. AND
 FRAN E. IVES
 O.R. 1467/0550

08-12-009-000-002
 6.3222 AC.
 WILLIAM K. AND
 FRAN E. IVES
 O.R. 1467/0550

08-12-009-000-001
 6.3222 AC.
 WILLIAM K. AND
 FRAN E. IVES
 O.R. 1467/0550

08-12-009-000-000
 6.3222 AC.
 WILLIAM K. AND
 FRAN E. IVES
 O.R. 1467/0550

08-12-009-000-000
 6.3222 AC.
 WILLIAM K. AND
 FRAN E. IVES
 O.R. 1467/0550

08-12-009-000-000
 6.3222 AC.
 WILLIAM K. AND
 FRAN E. IVES
 O.R. 1467/0550

08-12-009-000-000
 6.3222 AC.
 WILLIAM K. AND
 FRAN E. IVES
 O.R. 1467/0550

08-12-009-000-000
 6.3222 AC.
 WILLIAM K. AND
 FRAN E. IVES
 O.R. 1467/0550

08-12-009-000-000
 6.3222 AC.
 WILLIAM K. AND
 FRAN E. IVES
 O.R. 1467/0550

08-12-009-000-000
 6.3222 AC.
 WILLIAM K. AND
 FRAN E. IVES
 O.R. 1467/0550

08-12-009-000-000
 6.3222 AC.
 WILLIAM K. AND
 FRAN E. IVES
 O.R. 1467/0550

08-12-009-000-000
 6.3222 AC.
 WILLIAM K. AND
 FRAN E. IVES
 O.R. 1467/0550

08-12-009-000-000
 6.3222 AC.
 WILLIAM K. AND
 FRAN E. IVES
 O.R. 1467/0550

08-12-009-000-000
 6.3222 AC.
 WILLIAM K. AND
 FRAN E. IVES
 O.R. 1467/0550

08-12-009-000-000
 6.3222 AC.
 WILLIAM K. AND
 FRAN E. IVES
 O.R. 1467/0550

08-12-009-000-000
 6.3222 AC.
 WILLIAM K. AND
 FRAN E. IVES
 O.R. 1467/0550

08-12-009-000-000
 6.3222 AC.
 WILLIAM K. AND
 FRAN E. IVES
 O.R. 1467/0550

08-12-009-000-000
 6.3222 AC.
 WILLIAM K. AND
 FRAN E. IVES
 O.R. 1467/0550

08-12-009-000-000
 6.3222 AC.
 WILLIAM K. AND
 FRAN E. IVES
 O.R. 1467/0550

08-12-009-000-000
 6.3222 AC.
 WILLIAM K. AND
 FRAN E. IVES
 O.R. 1467/0550

08-12-009-000-000
 6.3222 AC.
 WILLIAM K. AND
 FRAN E. IVES
 O.R. 1467/0550

08-12-009-000-000
 6.3222 AC.
 WILLIAM K. AND
 FRAN E. IVES
 O.R. 1467/0550

08-12-009-000-000
 6.3222 AC.
 WILLIAM K. AND
 FRAN E. IVES
 O.R. 1467/0550

08-12-009-000-000
 6.3222 AC.
 WILLIAM K. AND
 FRAN E. IVES
 O.R. 1467/0550

08-12-009-000-000
 6.3222 AC.
 WILLIAM K. AND
 FRAN E. IVES
 O.R. 1467/0550

08-12-009-000-000
 6.3222 AC.
 WILLIAM K. AND
 FRAN E. IVES
 O.R. 1467/0550

SURVEY MAP SHOWING PROPOSED LOT SPLITS
 SITUATED IN THE TOWNSHIP OF HENRIETTA,
 COUNTY OF LORAIN, STATE OF OHIO,
 PART OF ORIGINAL LOT 9, TRACT 12

SCALE
 1" = 100'
 DATE
 5/97

REV.
 SHEET
 1/1
 JOB NO.
 97-237
 \97237.DWG

BRAMHALL
 ENGINEERING & SURVEYING COMPANY
 37311 HARVEST DRIVE
 AVON, OHIO 44011
 (216) 934-7878