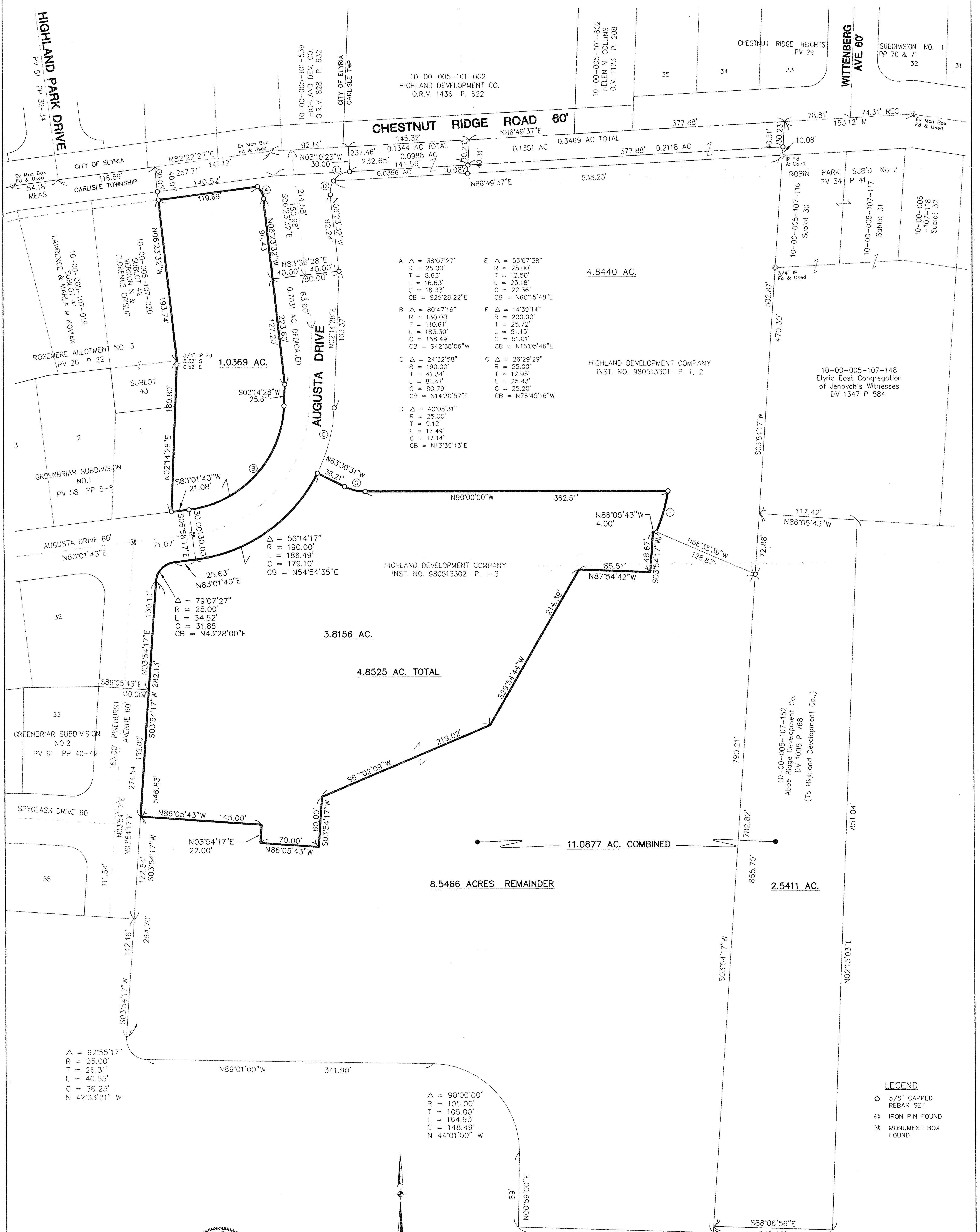


22729
VOIDED
2/5/99

BOUNDARY SURVEY
PARCEL SPLIT
PART OF ORIG. CARLISLE TWP.
SECTION NO. 5
CITY OF ELYRIA & TOWNSHIP OF CARLISLE
COUNTY OF LORAIN STATE OF OHIO
11-12-98

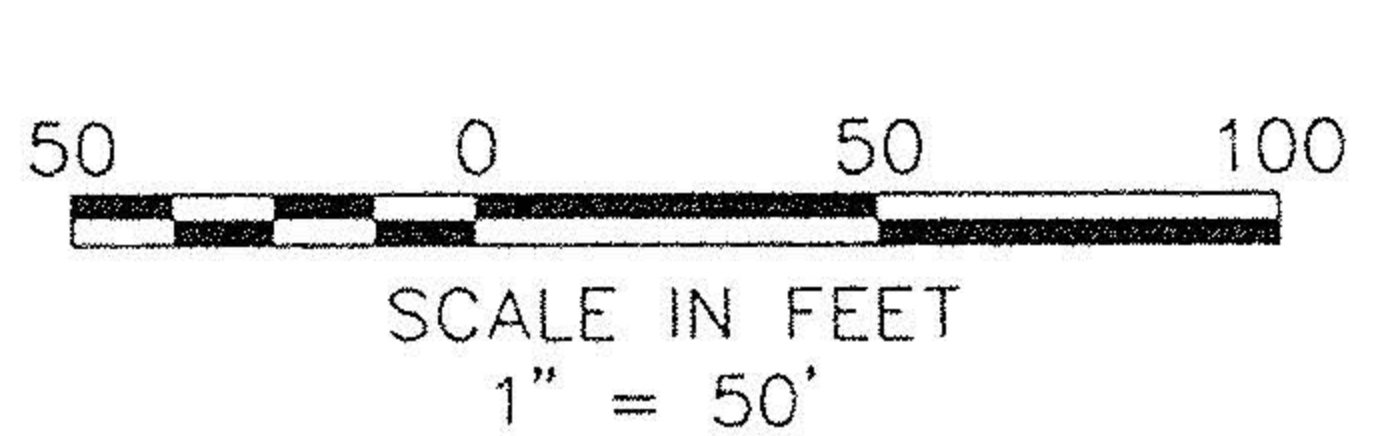


A Δ = 38°07'27"	E Δ = 53°07'38"
R = 25.00'	R = 25.00'
T = 8.63'	T = 12.50'
L = 16.63'	L = 23.18'
C = 16.33'	C = 22.36'
CB = S25°28'22"E	CB = N60°15'48"E
B Δ = 80°47'16"	F Δ = 14°39'14"
R = 130.00'	R = 200.00'
T = 110.61'	T = 25.72'
L = 183.30'	L = 51.15'
C = 168.49'	C = 51.01'
CB = S42°38'06"W	CB = N16°05'46"E
C Δ = 24°32'58"	G Δ = 26°29'29"
R = 190.00'	R = 55.00'
T = 41.34'	T = 12.95'
L = 81.41'	L = 25.43'
C = 80.79'	C = 25.20'
CB = N14°30'57"E	CB = N76°45'16"W
D Δ = 40°05'31"	
R = 25.00'	
T = 9.12'	
L = 17.49'	
C = 17.14'	
CB = N13°39'13"E	

Δ = 92°55'17"
R = 25.00'
T = 26.31'
L = 40.55'
C = 36.25'
N 42°33'21" W

Δ = 90°00'00"
R = 105.00'
T = 105.00'
L = 164.93'
C = 148.49'
N 44°01'00" W

LEGEND
○ 5/8" CAPPED REBAR SET
⊙ IRON PIN FOUND
⊗ MONUMENT BOX FOUND



KS ASSOCIATES, INC.
ENGINEERS/SURVEYORS
424 Middle Avenue
P.O. Box 89
Elyria, Ohio 44036
PHONE (216) 322-6317 * FAX: (216) 284-0623



DAVID L. ELWELL
REGISTERED SURVEYOR NO. 6333
12-01-98