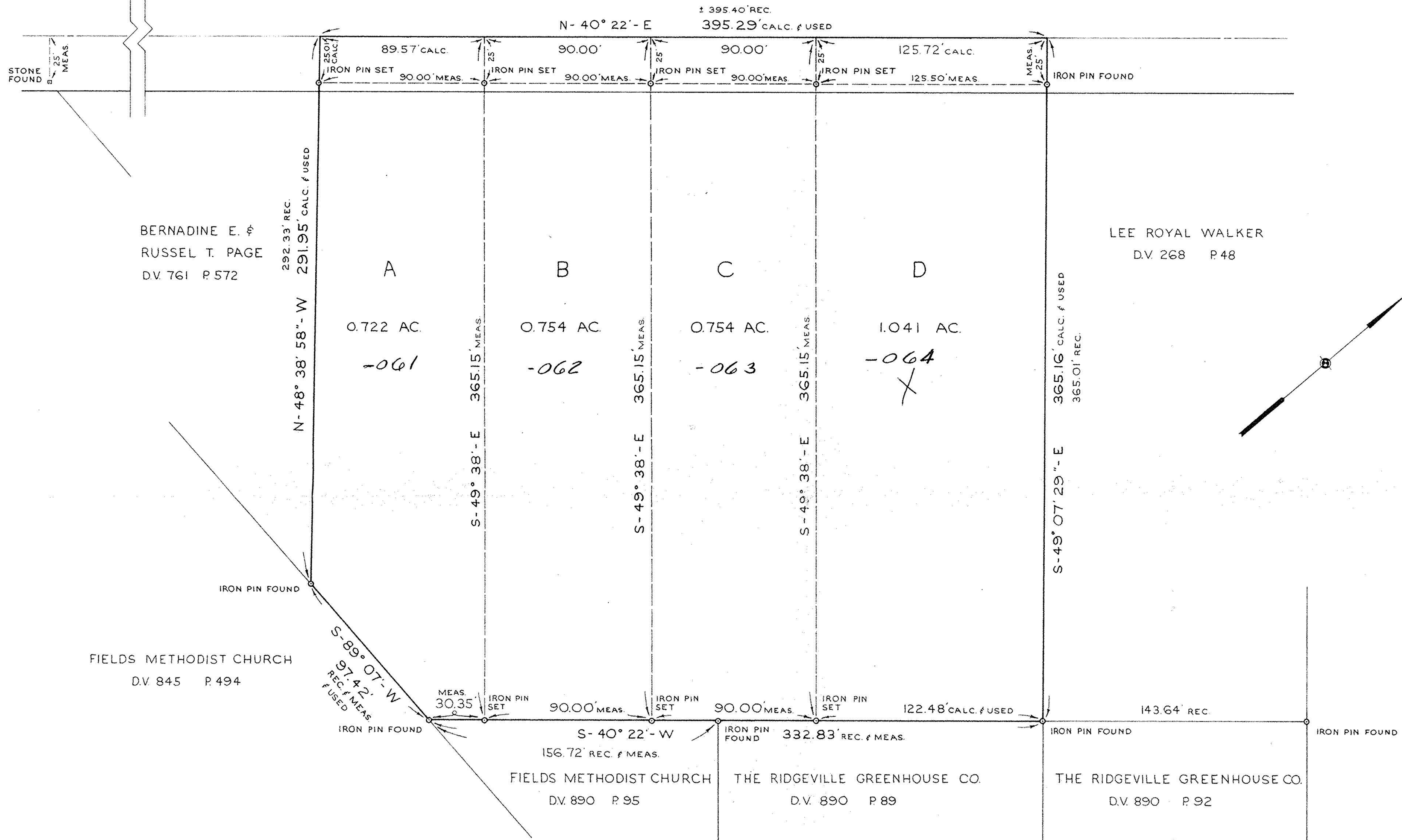


BUTTERNUT RIDGE ROAD 60'

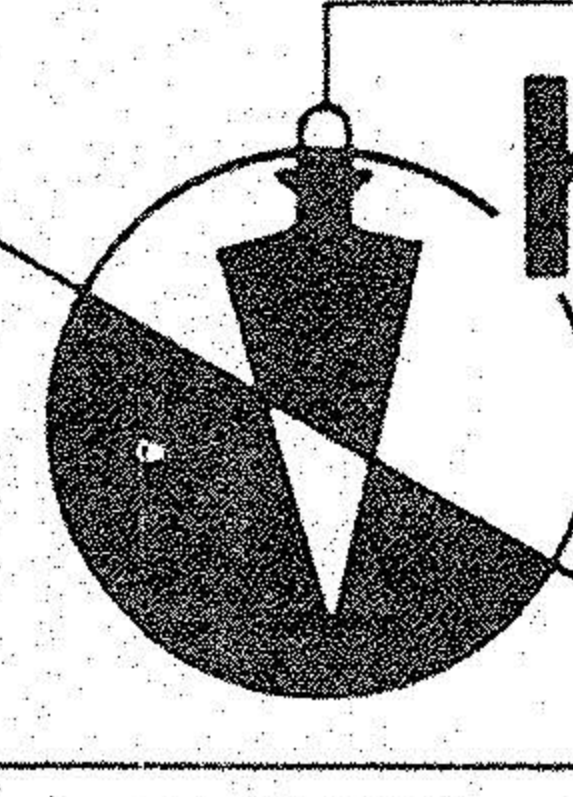


7989

PROJECT
 SURVEY OF
 PART OF ORIGINAL LOT NUMBER II,
 IN THE TOWNSHIP OF RIDGEVILLE, COUNTY OF LORAIN,
 STATE OF OHIO

Prepared for:
RUSSEL PAGE

Rev.	Drawn by: D.L.H.
	Checked by:
	App. by:
	Scale: 1" = 40'
	Date: MARCH 14, 1974



KLEINOEDER-SCHMIDT

and ASSOCIATES

ENGINEERS — SURVEYORS — CONSULTANTS in LAND PLANNING

ELYRIA - NORWALK - MEDINA OHIO

REFERENCES	
SHEET NO.	JOB NO.
1 of 1	74-46