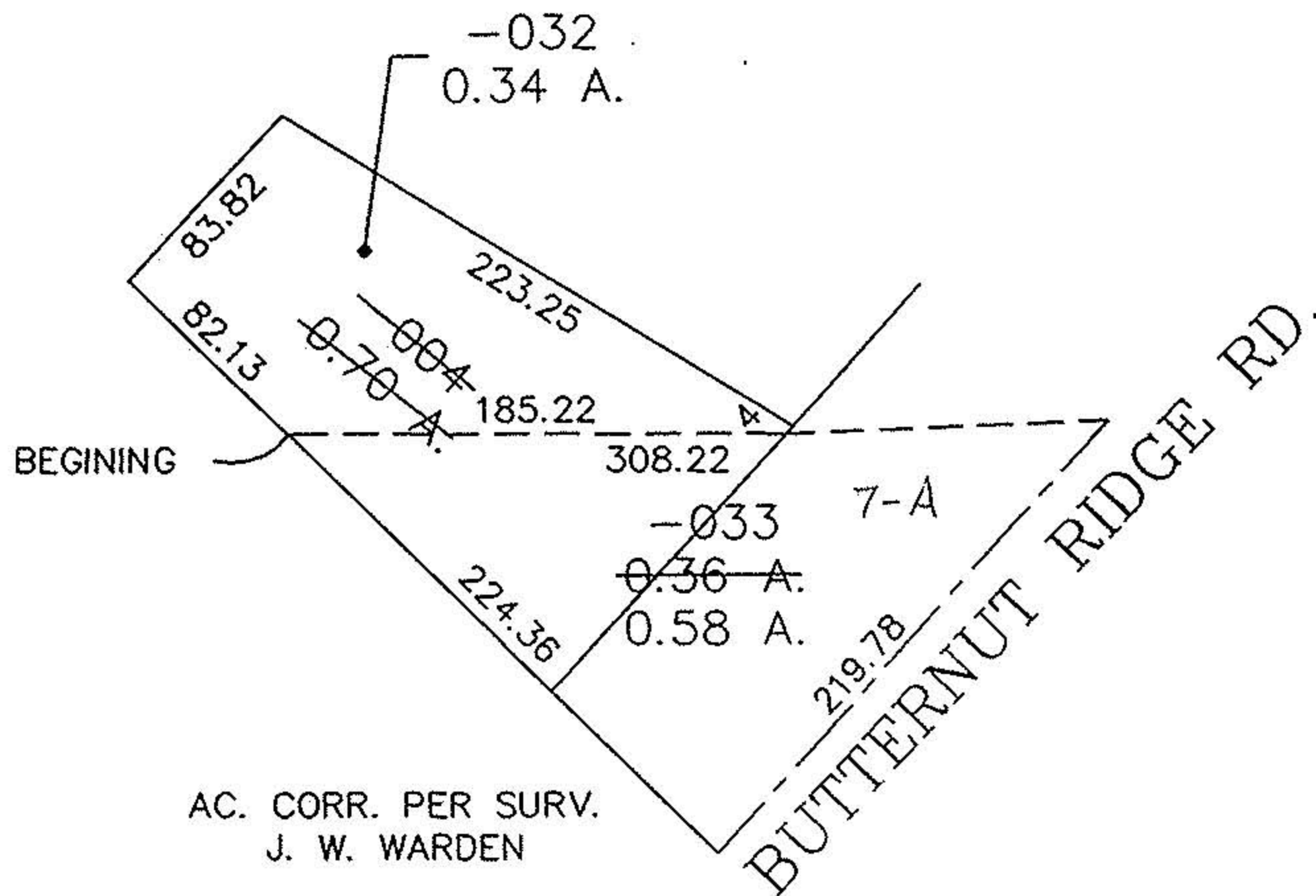
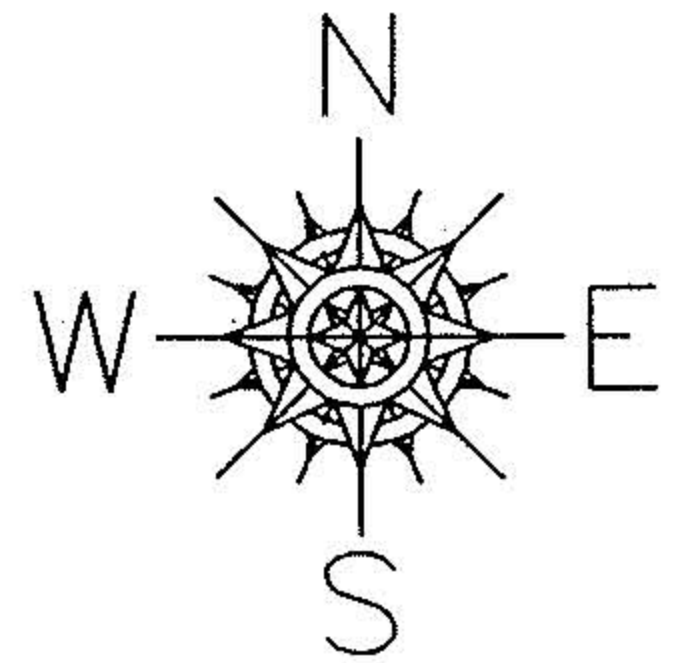


PARENT PARCEL: 07-00-011-101-004

CHILD PARCEL: 07-00-011-101-032 & -033

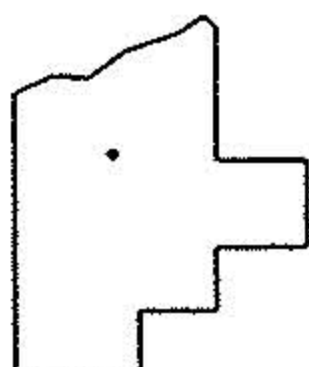
STARTING POINT: BEGINING AT N.E. CORNER OF LAND CONVEYED TO DYER N. SWEET

NO. 22585-D



SEE OR 1434/1039

PRIOR INSTRUMENT: DV 545/495
PRIOR INSTRUMENT: DV 570/107



SPLITS/DEEDS PROCESSED
LORAIN COUNTY TAX MAP DEPARTMENT
226 MIDDLE AVE. ELYRIA, OHIO

SURVEYED BY: J.W. WARDEN
CLOSURE: CAN'T RUN
MAP PAGE(S): 07-00-011-A
APPROVED BY: TJS DATE: 09/28/98
SCALE: 1" = 100 PRIOR INSTRUMENT: DV 545/495