

REMAINDER LOT 4 LIBERTY PARKWAY LOT SPLIT 12.76 ACRES

#13791

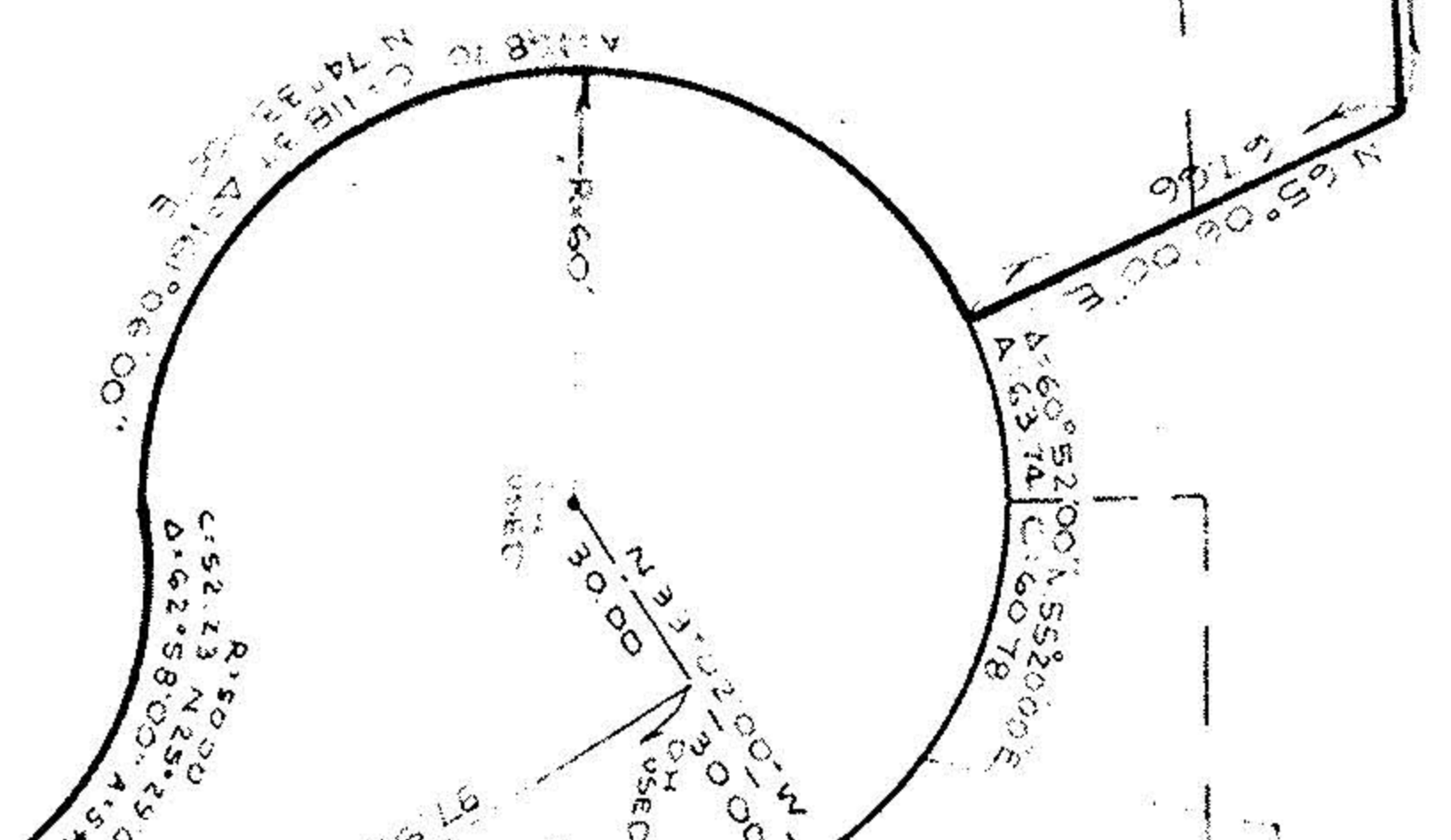
CLEVELAND ELECTRIC ILLUMINATING CO.
N 65°19'43"W
341.42

4.487 ACRES

DITCH EASEMENT

N 0°15'25"W 793.92

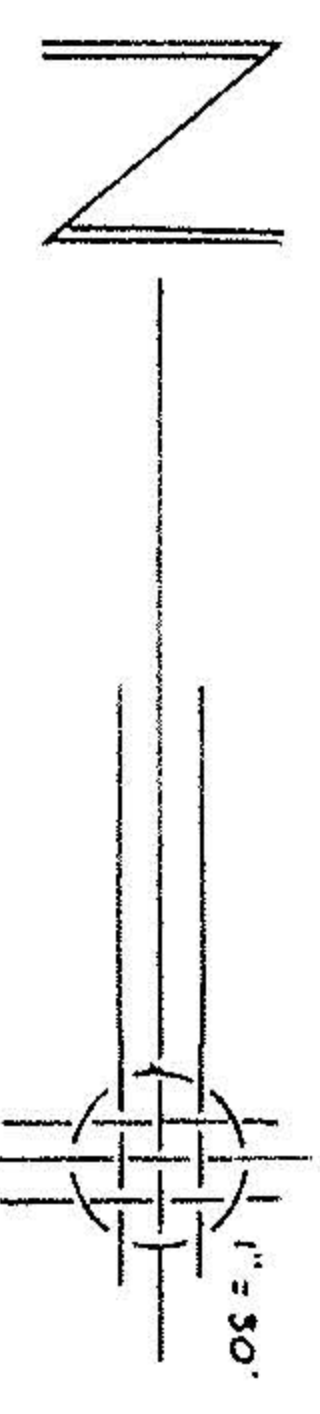
WEST LINE SPACE-AGE CENTER CO. VOL. 860 PG. 155



LIBERTY PARKWAY 60' VOL. 1259

LIBERTY INDUSTRIAL PARK CONDOMINIUM

LOT 2 LIBERTY PARKWAY LOT SPLIT



#13791

APPROVED
LORAIN CO.
MAP DEPT.
DATE 9-5-80
PAGE 11-11-80
BY [Signature]
VOID AFTER

#13791

R: 132.00'
A: 129.85'
C: 124.87'
N: 78°02'00\"/>

NOT USED

RD. 60'

LEAR NAGLE LOT SPLIT
OF
4.487 ACRES
ON
LIBERTY PARKWAY

ORIGINAL RIDGEVILLE TOWNSHIP LOT NO. 8
IN
CITY OF NORTH RIDGEVILLE, OHIO

JULY 1980 BY P.T. Sawyer h.
THE HENRY GREITZ ENGINEERING CO.
SECY TREAS.
SCALE 1\"/>

NEED NOT BE REQUIRED, APPROVED BY THE MAYOR
OF THE CITY OF NORTH RIDGEVILLE, OHIO THIS DAY
OF 1980

MAYOR