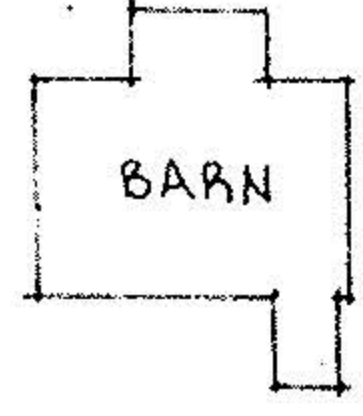
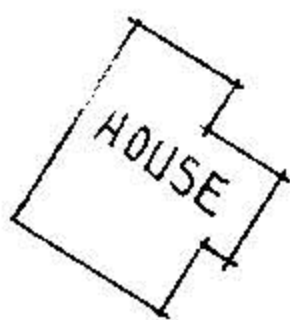


CHARLES & SHIRLEY MOON
3748.8

8.00 A.



0.55
2.000 A.



DORIS KIESEL
D.V. 1219 P. 537 PCL # 2

0.752 A.
2.037

0.548 A.
3.

1.014 AC.
4.

KARL KIESEL

84.84 A.

D.V. 958 P. 939

0.56

56.64 A.

KARL & DORIS KIESEL

N-1°12'-E

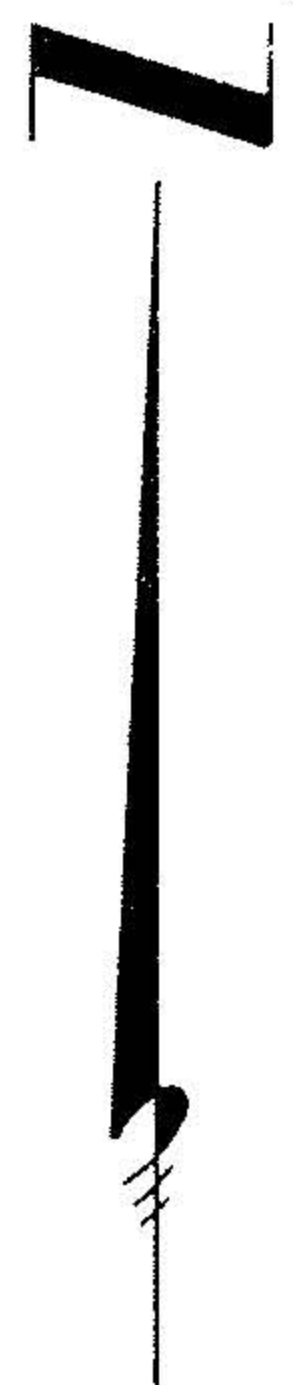
4090.68



RIDGEVILLE TWP.

EATON TWP.

10



THE COUNTY COMMISSIONERS OF LORAIN COUNTY D.V. 235 P. 531
136.80 90.00 90.00 90.00 90.00 90.00 90.00 90.00 90.00 24.78
N-89°06'-W SPRAGUE ROAD 701.58

#16353

APPROVED
LORAIN CO.
MAP DEPT.
DATE 9-4-85
PAGE 7-H
BY C. FRANCIS
VOID AFTER

PARCEL MAP

PART OF RIDGEVILLE TOWNSHIP ORIGINAL LOT 1
CITY OF NORTH RIDGEVILLE COUNTY OF LORAIN

STATE OF OHIO

SCALE: 1" = 60'

OCT. 3, 1978

REVISED 10-13-78
REVISED 6-18-80
REVISED 12-17-84

PREPARED BY
KLEINOEDER-SCHMIDT & ASSOC.
CONSULTING ENGINEERS & SURVEYORS