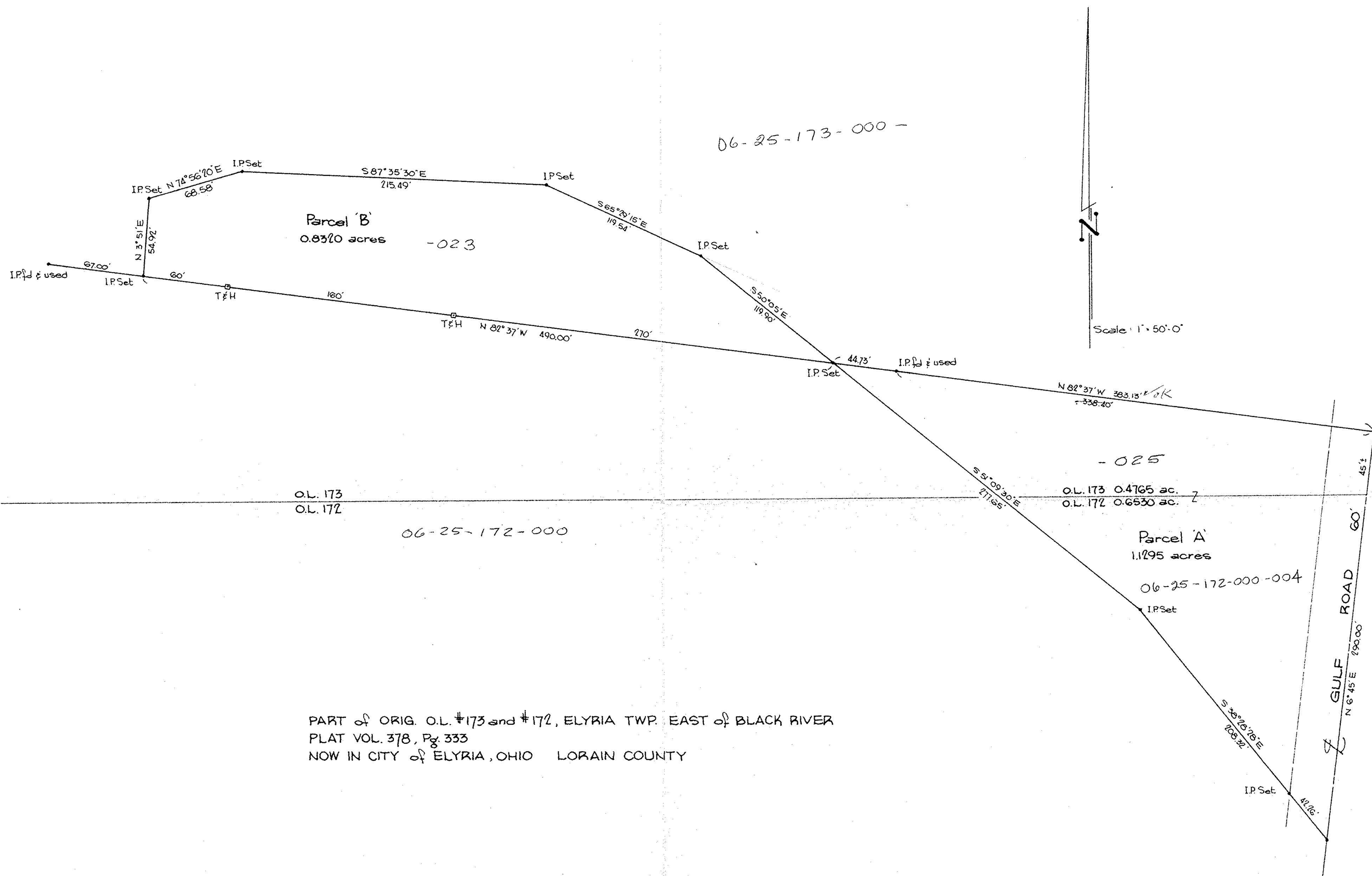


00-51-25-00
00-52-13-00

06-25-172
173

6-50



O.L. 173
O.L. 172

06-25-172-000

O.L. 173 0.4765 ac.
O.L. 172 0.6530 ac.

Parcel A
1.1295 acres

06-25-172-000-004

PART of ORIG. O.L. #173 and #172, ELYRIA TWP. EAST of BLACK RIVER
PLAT VOL. 378, Pg. 333
NOW IN CITY of ELYRIA, OHIO LORAIN COUNTY

Place of Beginning

#9876
6-50

McGLINCHY and ASSOCIATES
PROFESSIONAL ENGINEERS & SURVEYORS
538 WEST BROAD ST. ELYRIA, OHIO
MAY 12, 1976 #76899

00-51-25-00
00-52-13-00
E/R 6-25-172
173