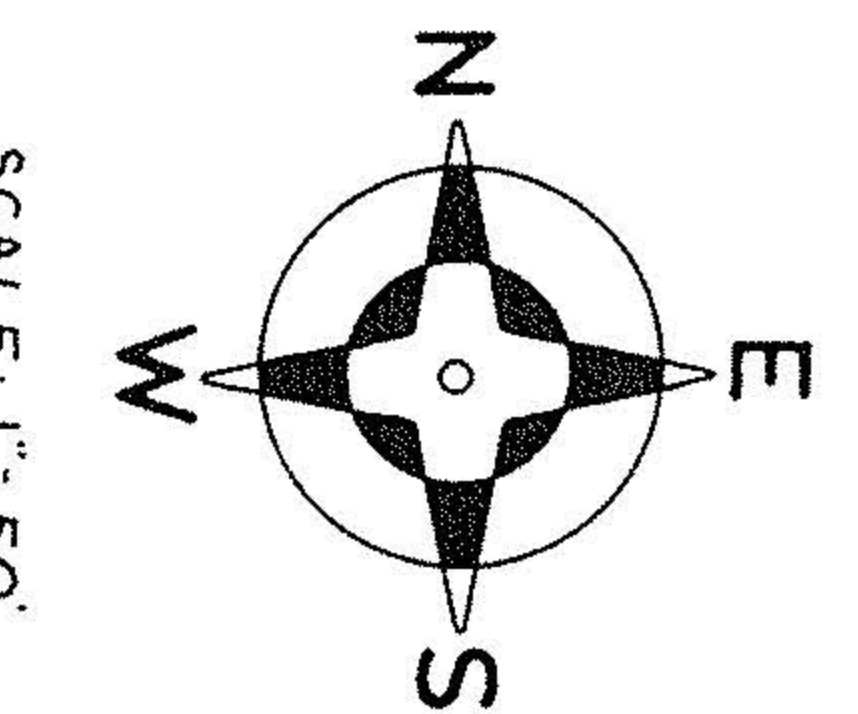
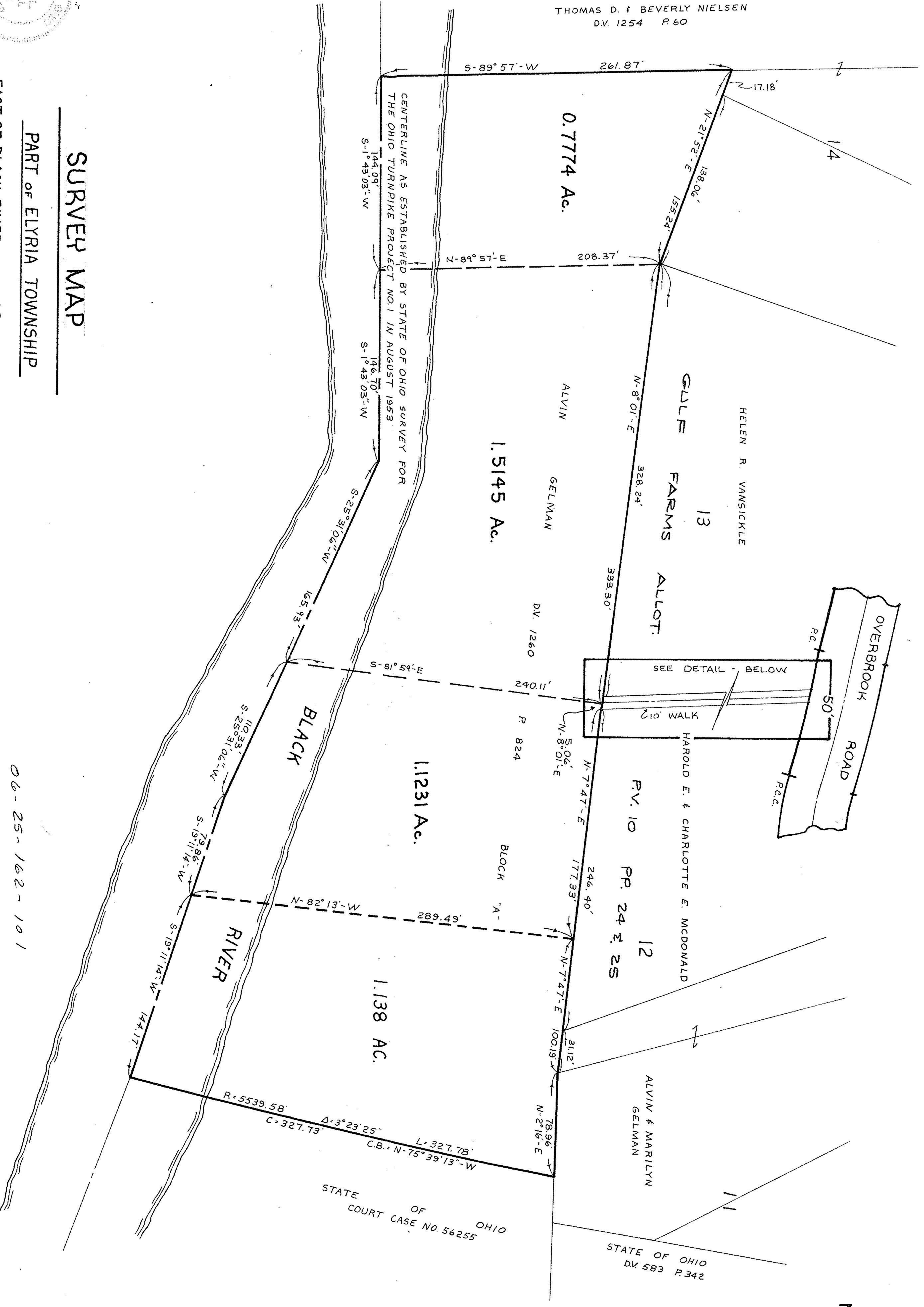
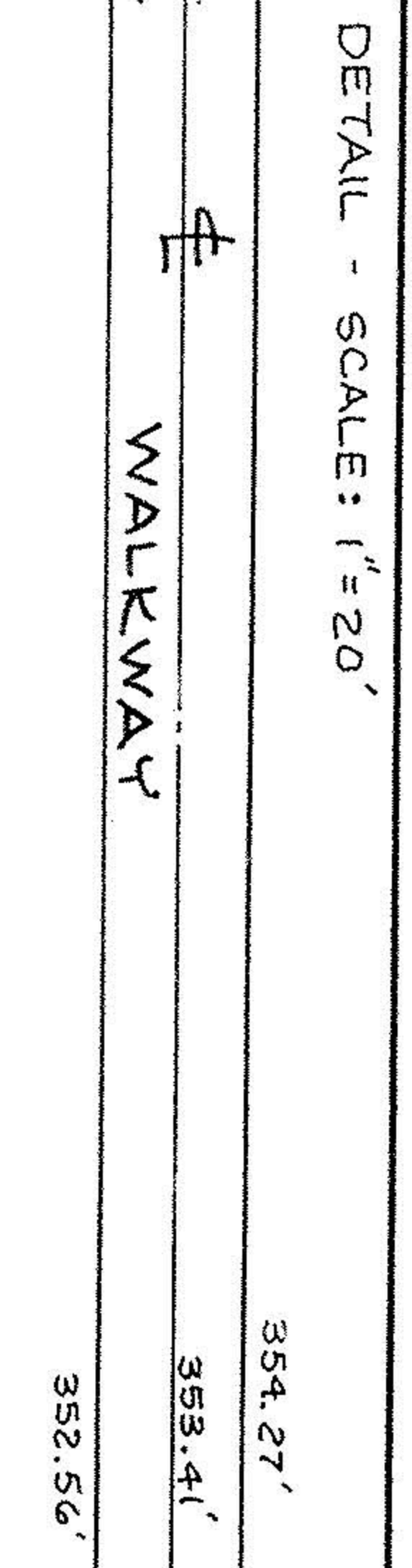
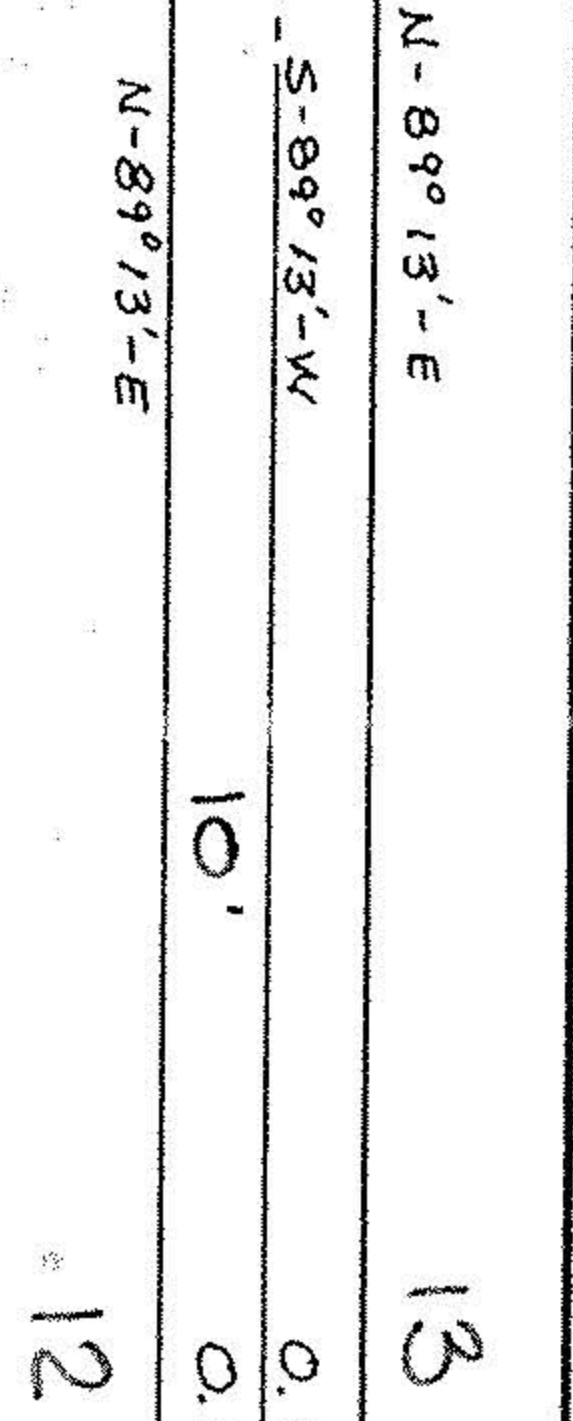
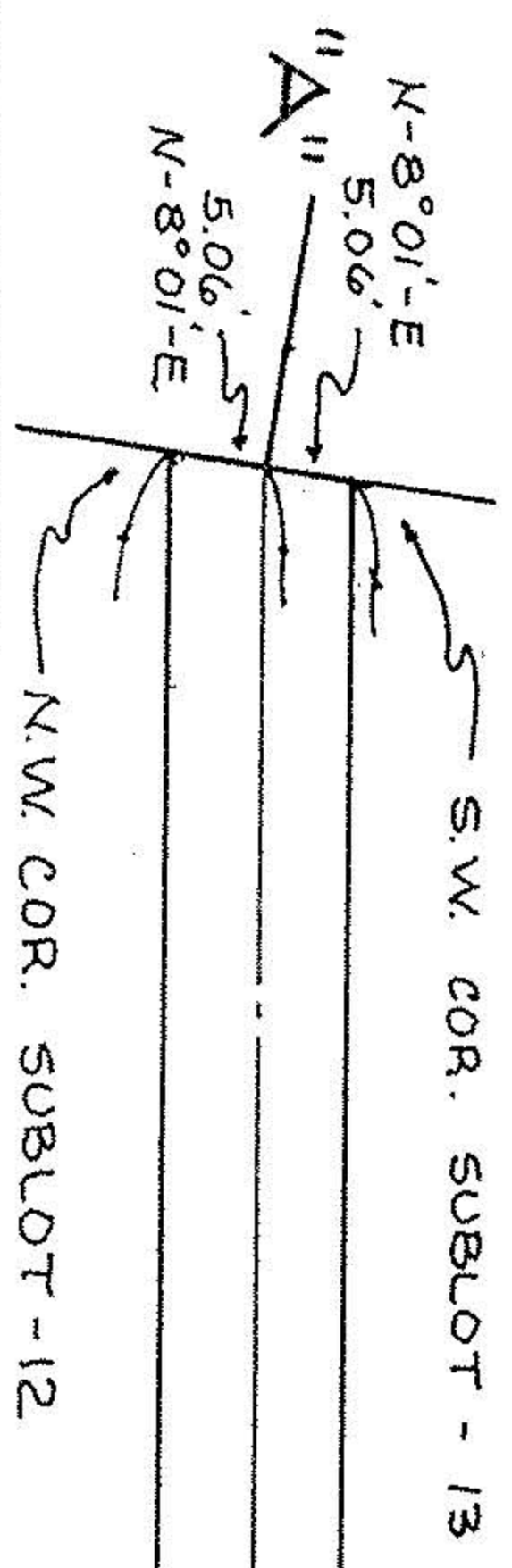


THOMAS D. & BEVERLY NIELSEN
D.V. 1254 P.60

CITY OF ELYRIA COUNTY OF LORAIN STATE OF OHIO
 EAST OF BLACK RIVER — ORIG. LOT NO. 162
 PART OF ELYRIA TOWNSHIP
 SURVEY MAP

REC. SURV. NO. 6333
 REV. 8-25-87



STATE OF OHIO
COURT CASE NO. 56255

STATE OF OHIO
D.V. 583 P.342

17634

APPROVED	DATE
LORAIN CO.	9-3-87
MAP DEPT.	
BY	PAGE
O. FRANCIS	6 of 6
VOID	
AFTER	17634

CURVE DATA	"A"	"B"
R =	790.95'	790.95'
T =	52.63'	52.63'
C =	5.26'	5.26'
CB =	N-16°52'59"E	N-17°58'35"E

