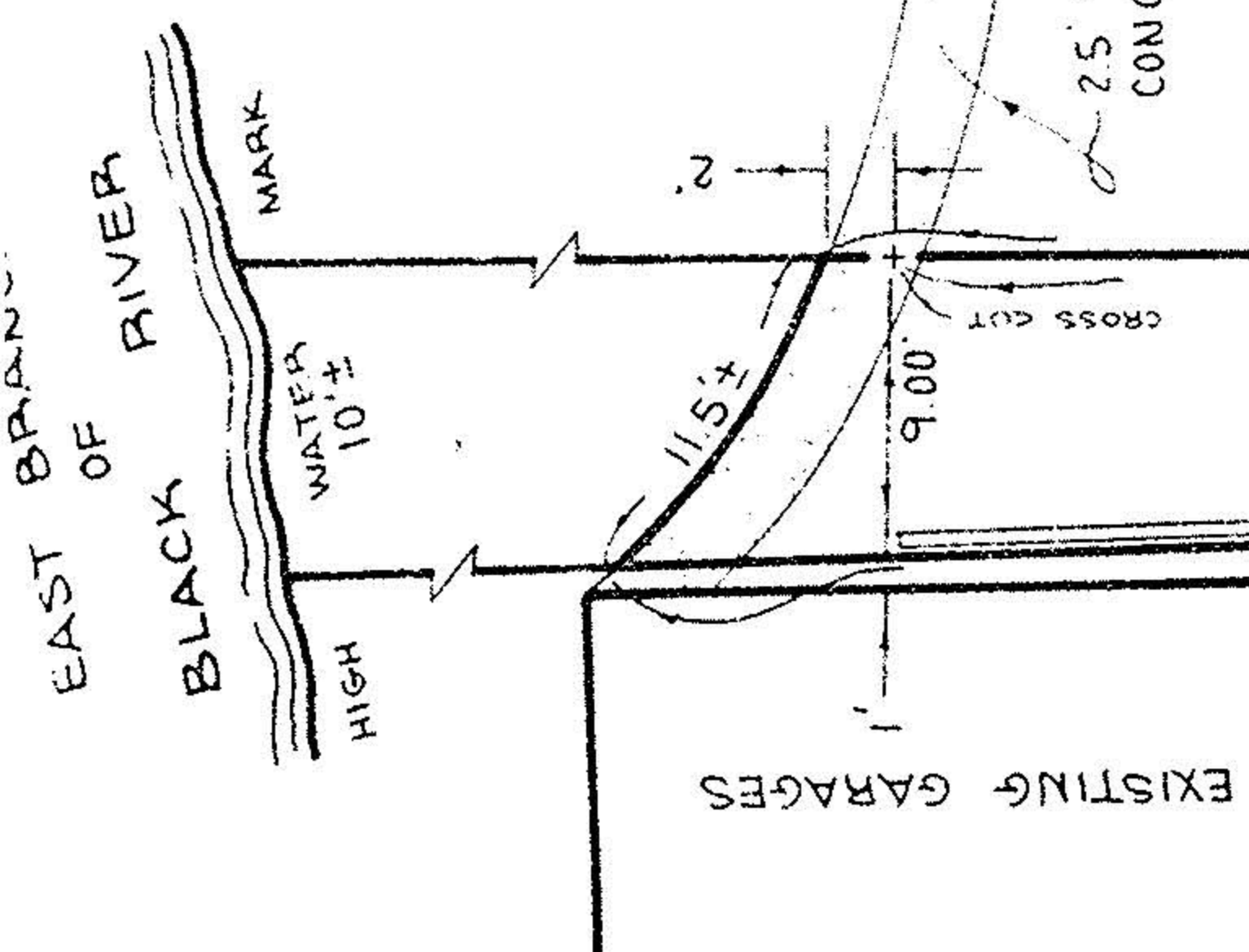
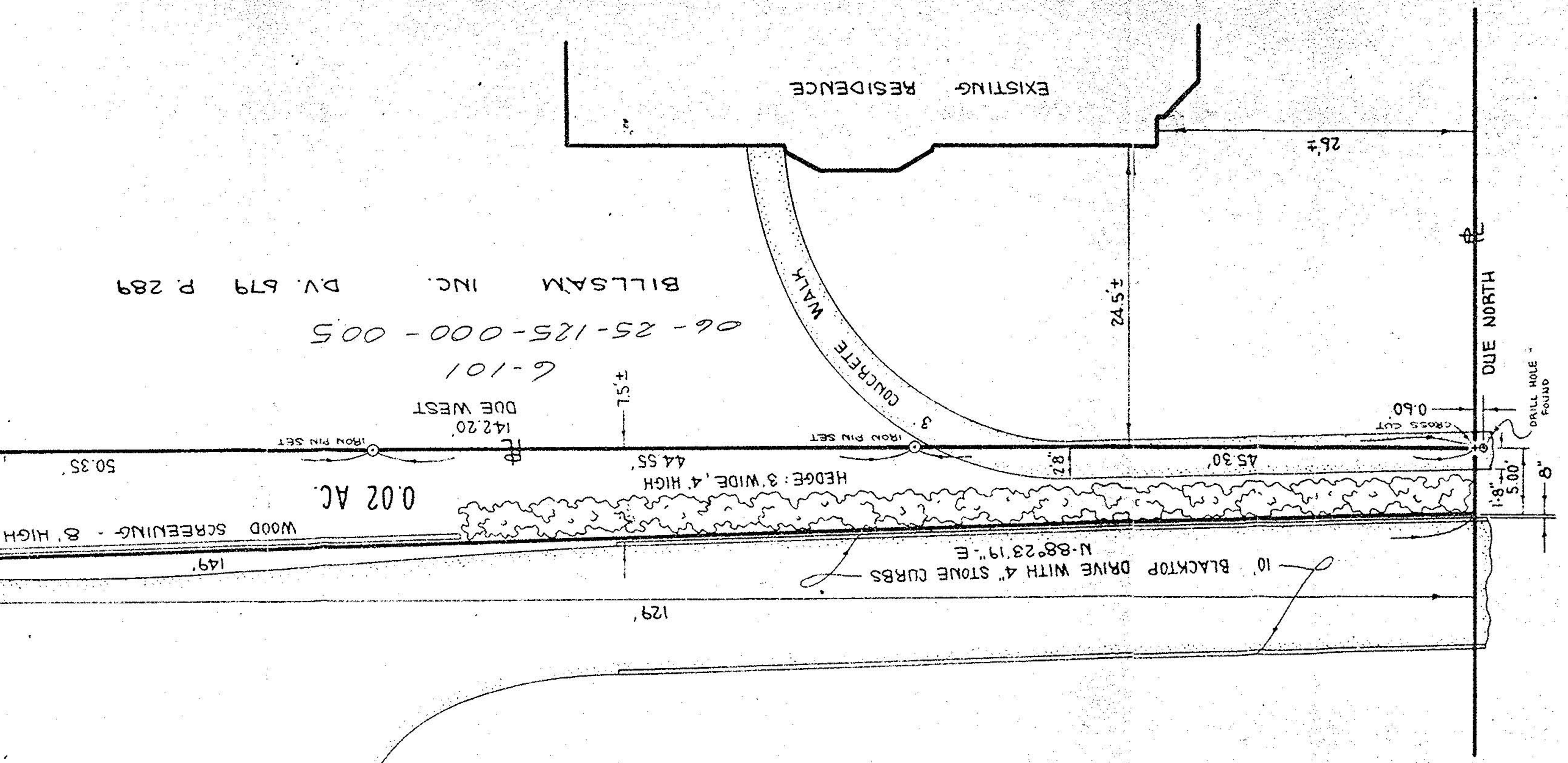


6-101
06-25-006



6-101
06-25-006
MILLER & F. O'G
CITY OF ELYRIA

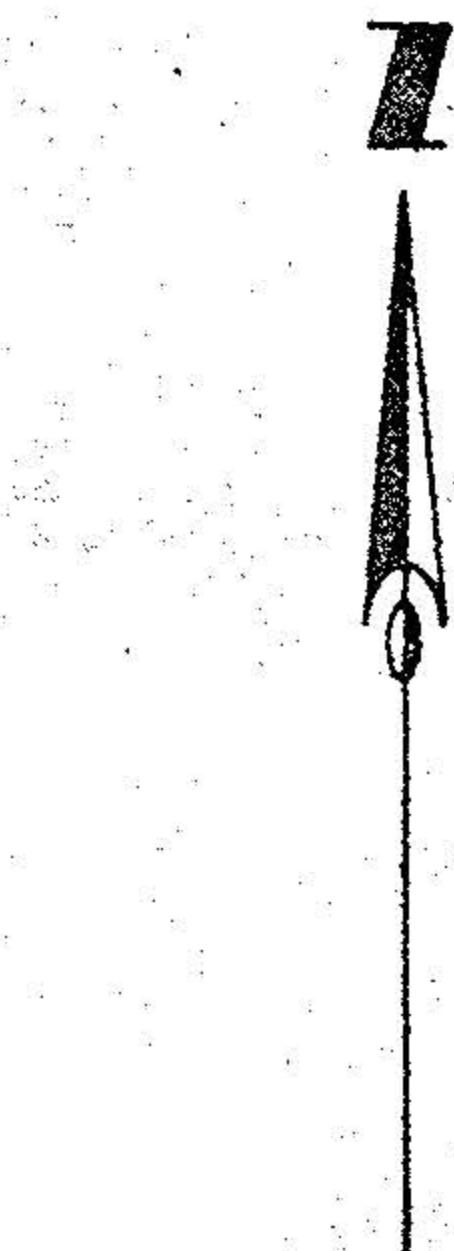


6-101
06-25-125-000-005
BILLSAM INC. D.V. 679 P. 289

WESTERN RESERVE MORTGAGE CORP. D.V. 1001 P. 595

6-101
06-25-006

WASHINGTON AVENUE 100'



LOCATION SURVEY
OF PART OF
MILL LOT ~ ELYRIA TOWNSHIP ~ E. OF BLACK RIVER
CITY OF ELYRIA COUNTY OF LORAIN STATE OF OHIO

SCALE: 1" = 10' JUNE 11, 1975

PREPARED BY
KLEINOEDER - SCHMIDT & ASSOC.
REGISTERED ENGINEERS & SURVEYORS
ELYRIA OHIO