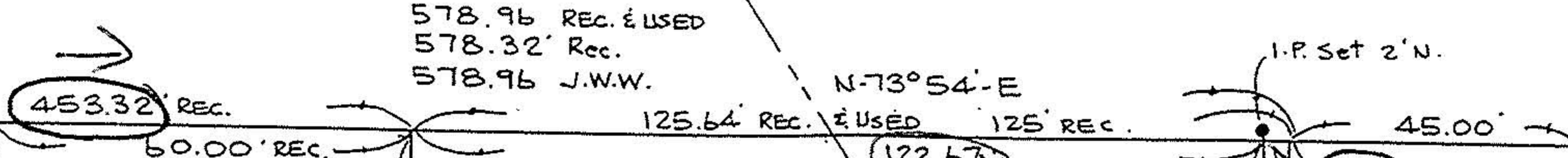
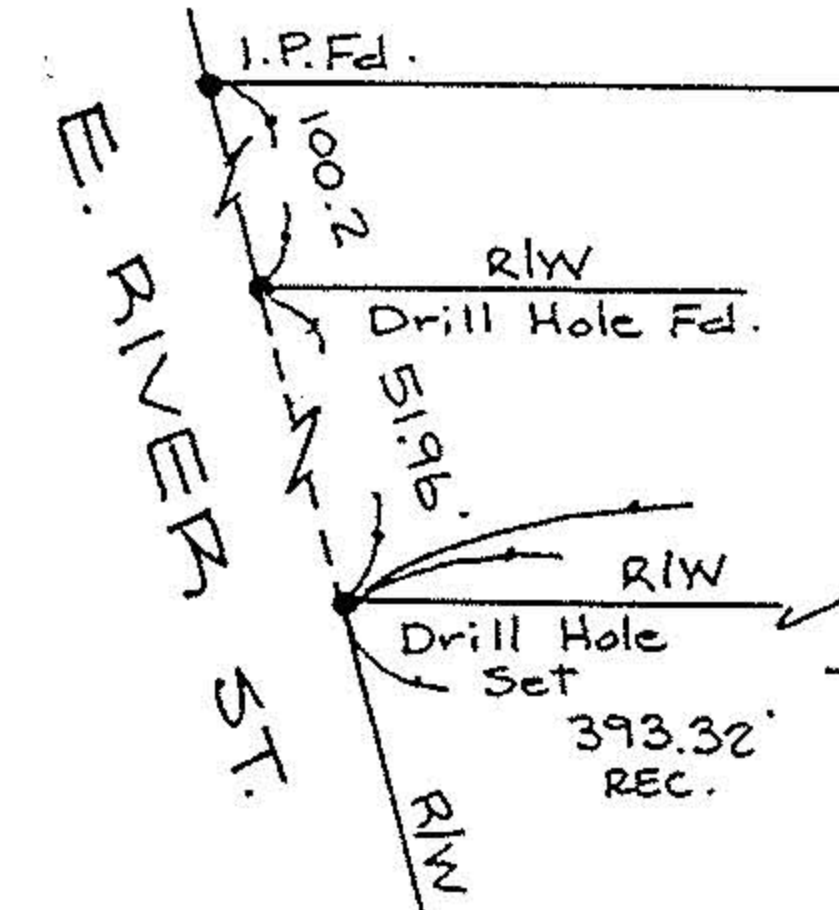




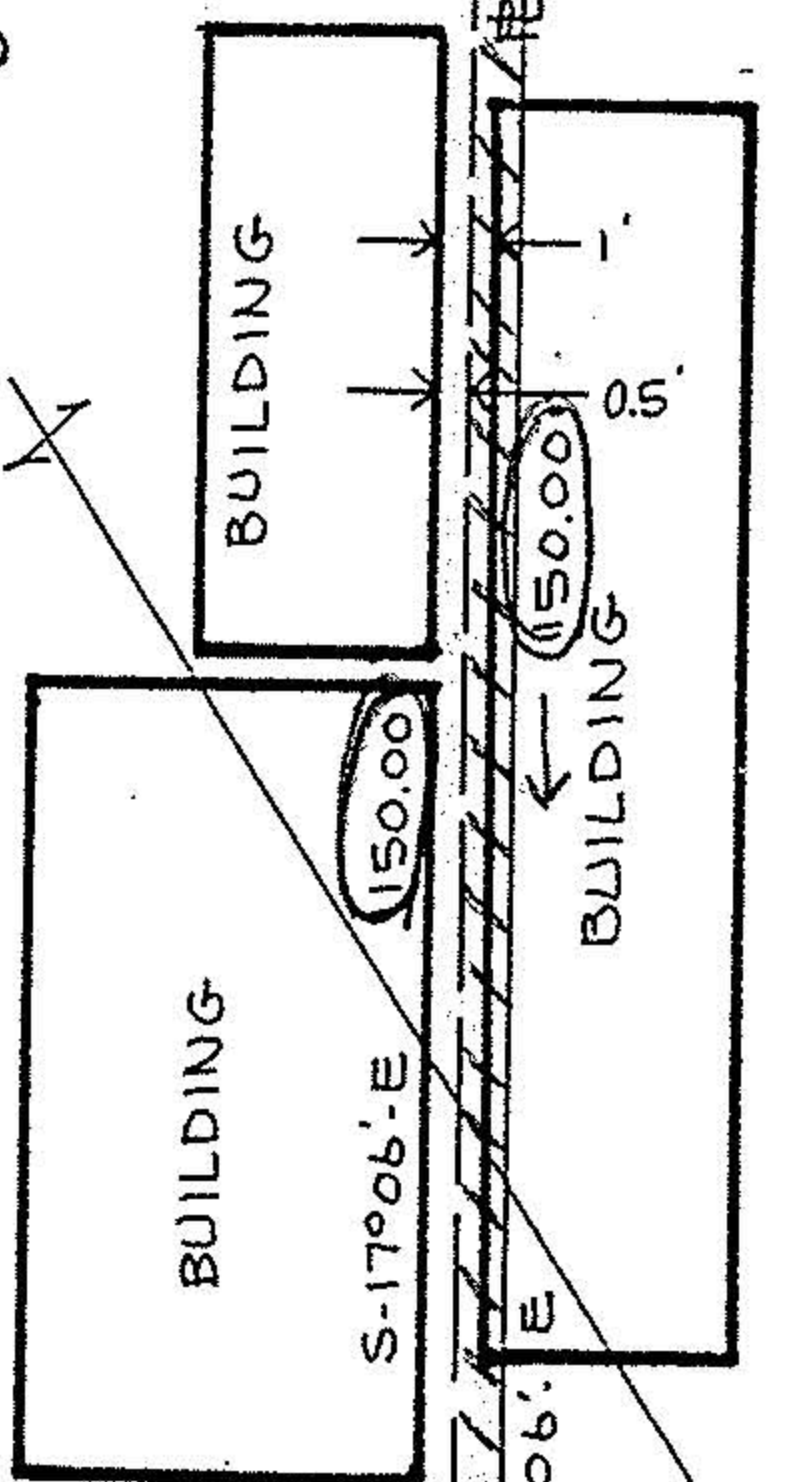
BUCKEYE STREET 50'



(-009) (-010) (-003) (-004)

ELYRIA BELTING & MACHINERY CO. D.V. 311 P. 311

AKA L & H REALTY HARVEY & LEON ALTFELD D.V. 654 P. 94



(0.4224 AC.)

ELYRIA BELTING & MACHINERY CO.

19878

APPROVED
LORAIN CO.
MAP DEPT.

DATE 4-16-92

PAGE C-103

BY CAROLYN FRANCIS

VOID AFTER # 19873

0 FEET 50'

SURVEY MAP

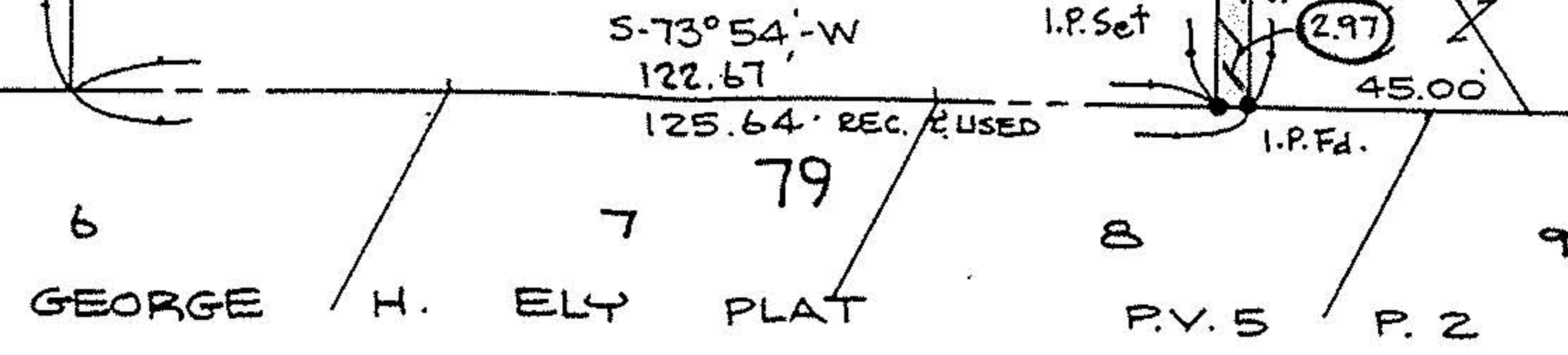
PART OF ELYRIA TOWNSHIP
ORIGINAL LOTS 80 & 83
EAST OF BLACK RIVER

CITY OF ELYRIA COUNTY OF LORAIN
STATE OF OHIO

SCALE: 1" = 30' OCT. 15, 1991

PREPARED BY
KS ASSOCIATES INC.
ENGINEERS SURVEYORS

David L. Elwell
REG. SURV. NO. 6333



REF. J.W.W. SURV.
7-9-1919
F.B. 14 P. 52