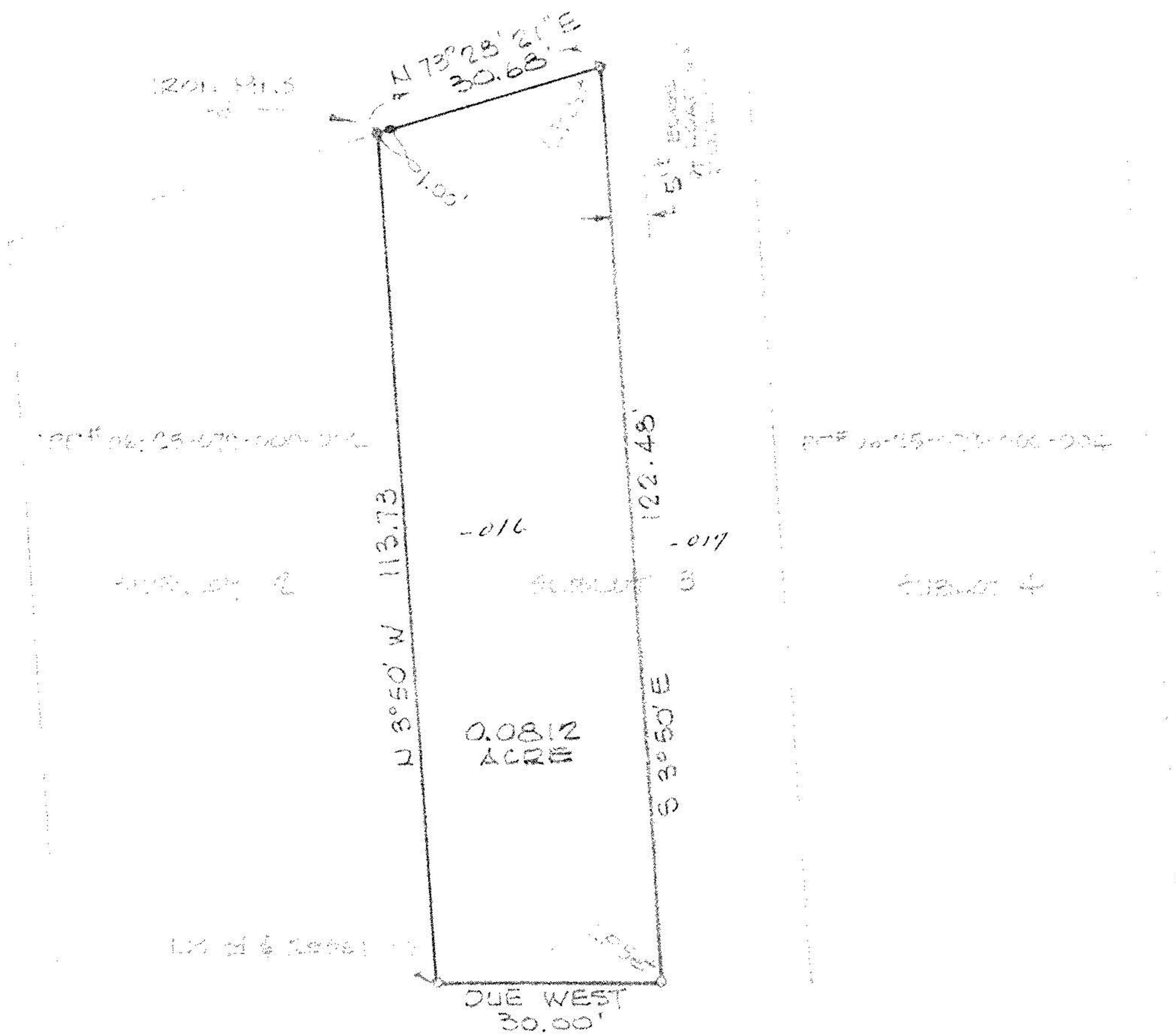


#14006



SCALE: 1"=20'

#14006

APPROVED LORAIN CO. MAP DEPT.	
DATE 1-15-81	
PAGE 6-123	
BY <i>C. A. ...</i>	
VOID AFTER	14006

CLARK STREET - 50'

MAP of PROPOSED PARCEL SPLIT  
 PREPARED FOR UNDERMERE STORAGE and MOVING Co.  
 PART of SUBLOT 3 in GEO. H. ELY'S PLAT of an ADDITION  
 TO THE CITY of ELYRIA - PLAT VOLUME 5, PAGE 2  
 CITY of ELYRIA      LORAIN COUNTY      OHIO

McGLINCHY and ASSOCIATES INC.  
 PROFESSIONAL ENGINEER and SURVEYORS  
 110 1/2 MIDDLE AVE. ELYRIA, OHIO  
 SEPTEMBER 1980      #806443