

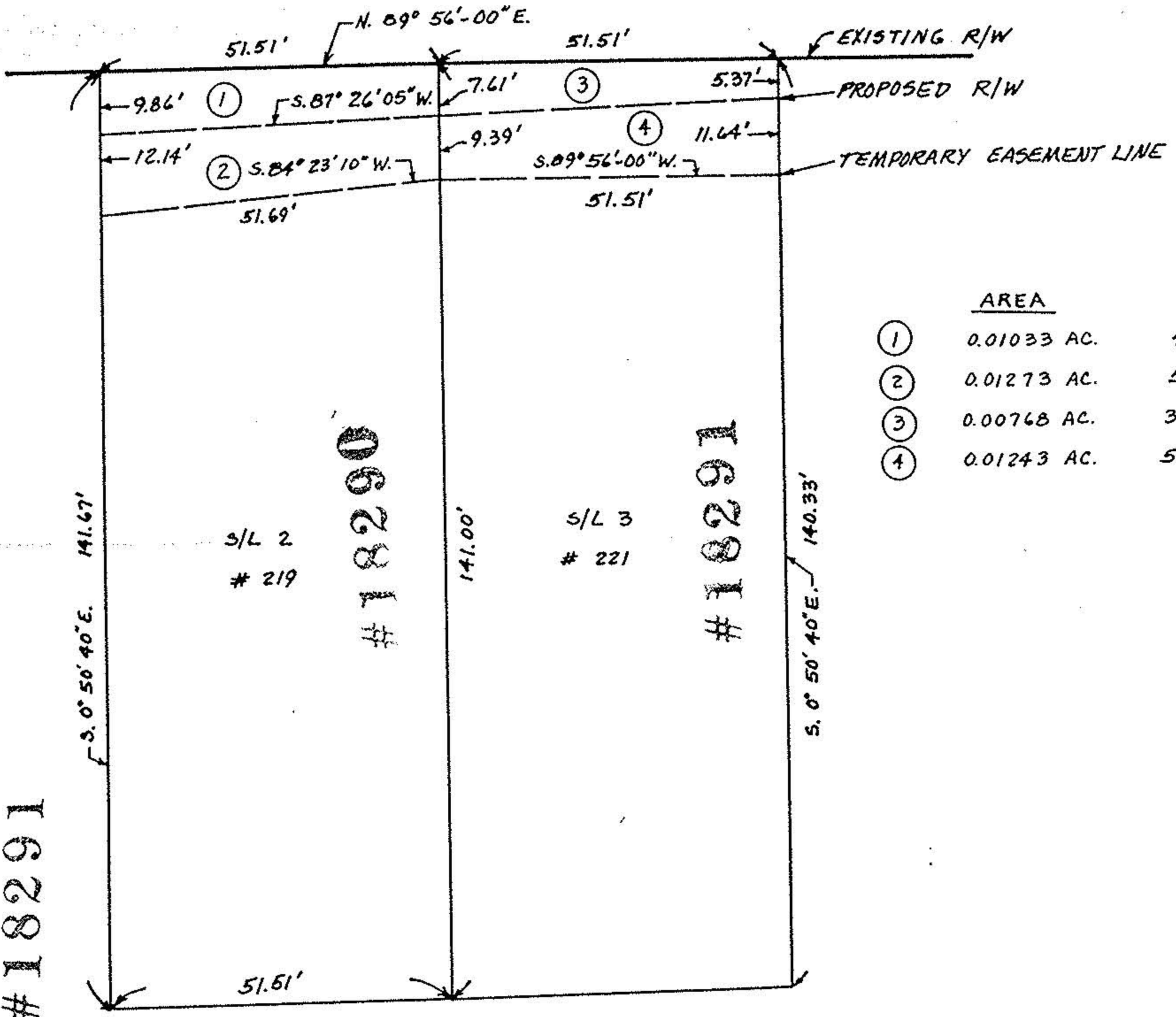
06-25-076-102

N



SCALE ?

E. BROAD ST.



	AREA	
①	0.01033 AC.	450 SQ. FT.
②	0.01273 AC.	555 SQ. FT.
③	0.00768 AC.	334 SQ. FT.
④	0.01243 AC.	542 SQ. FT.

#18290
#18291

S. 0° 50' 40" E. 141.67'

S/L 2
219

#18290

141.00'

S/L 3
221

#18291

S. 0° 50' 40" E. 140.33'

51.51'

THE DATA AND DIMENSIONS SHOWN HEREIN ON THIS PLOT PLAN ARE BASED ON RIGHT-OF-WAY DRAWINGS FOR THE PROPOSED EAST BROAD STREET WIDENING PROJECT RIGHT-OF-WAY PLANS, AS PREPARED BY RICHLAND ENGINEERING, LTD., AND NOW ON FILE IN THE ELYRIA CITY ENGINEER'S OFFICE.

Lonny G. Shippy 1-27-89
 LONNY G. SHIPPY, P.E., CITY ENGINEER



#18290
#18291

APPROVED	
LORAIN CO.	
MAP DEPT.	
DATE	2-9-89
PAGE	G-122
BY	Carol Francis
VOID AFTER	#18290/91

LOT LINES	
219 - 221 EAST BROAD ST.	
OFFICE OF THE CITY ENGINEER	
DRAWN BY:	NJT 1-26-89
CHECKED BY:	LGS 1-26-89

122