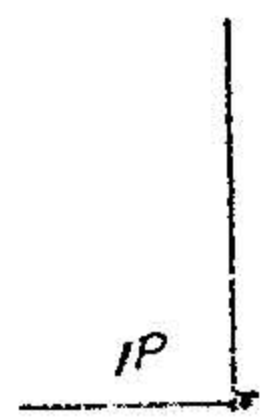
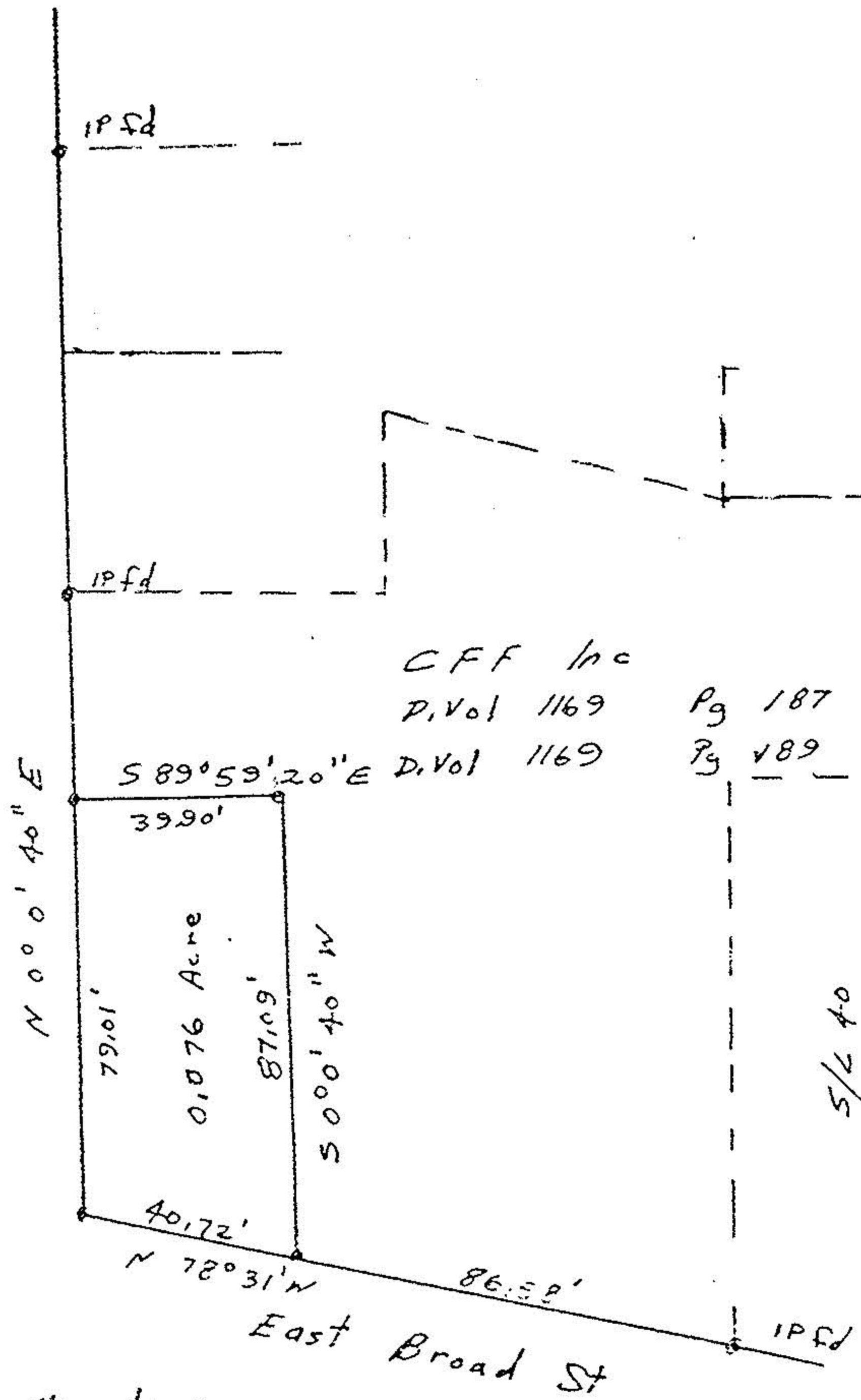


• RLS set

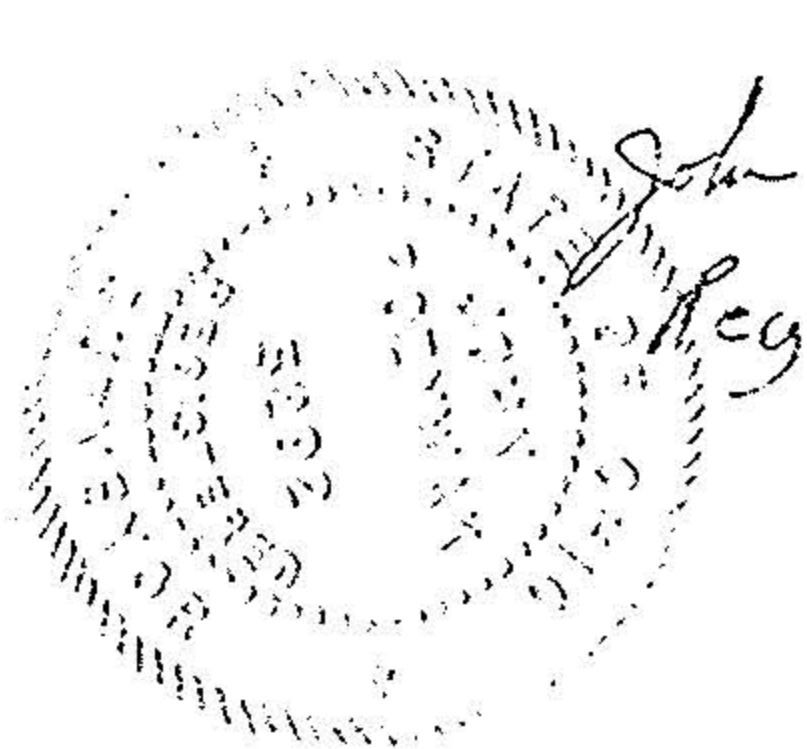


Summer St



CFF Inc  
D. Vol 1169 Pg 187  
D. Vol 1169 Pg 189

Bearings on a assumed Meridian



John Poyzuzal  
Reg  
Surveyor  
# 5292

Survey for CFF Inc  
Part of Original Lot 70  
East of the Black River  
Original Elyria Twp  
City of Elyria  
Lorain County Ohio  
Oct 9, 1982 Scale 1/2" = 40'