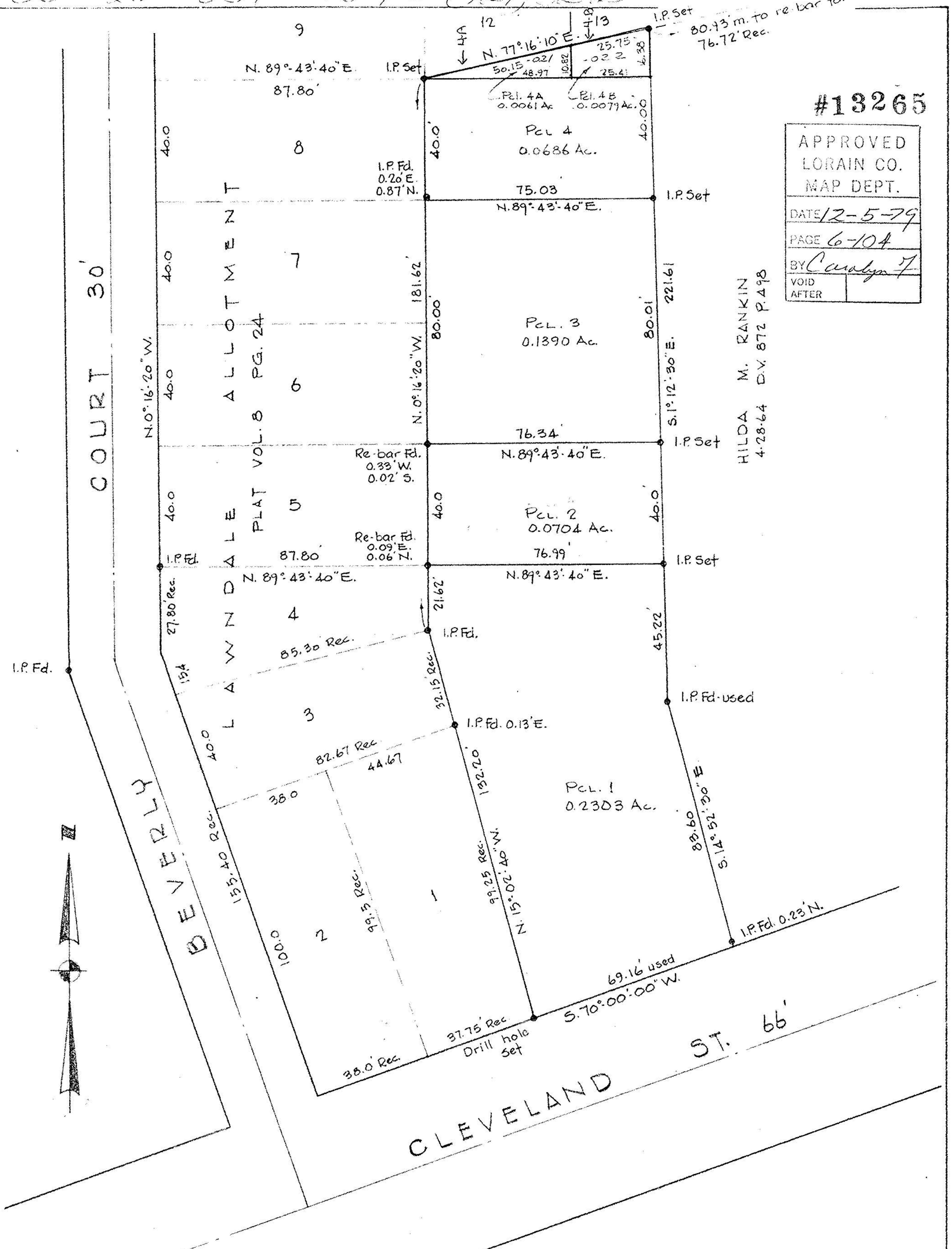


66-225 601-167-11/11/11



#13265

APPROVED
LORAIN CO.
MAP DEPT.

DATE 12-5-79

PAGE 6-104

BY Carolyn F.

VOID
AFTER

HILDA M. RANKIN
4-28-64 D.V. 872 P.498

SURVEY FOR LESLIE A. & RUTH E. SLATINSKY

PT. OF O.L. 37 EAST OF BLACK RIVER ELYRIA TOWNSHIP
CITY OF ELYRIA LORAIN COUNTY OHIO
SCALE 1" = 30' DEC. 12, 1977

LAUNDON • SIMON • CAHL & ASSOC.
ENGINEERS SURVEYORS
77-690 FB. 103-68

Rev. 5/31/78 - Pels. 4A & 4B

MAY 31 1978

99