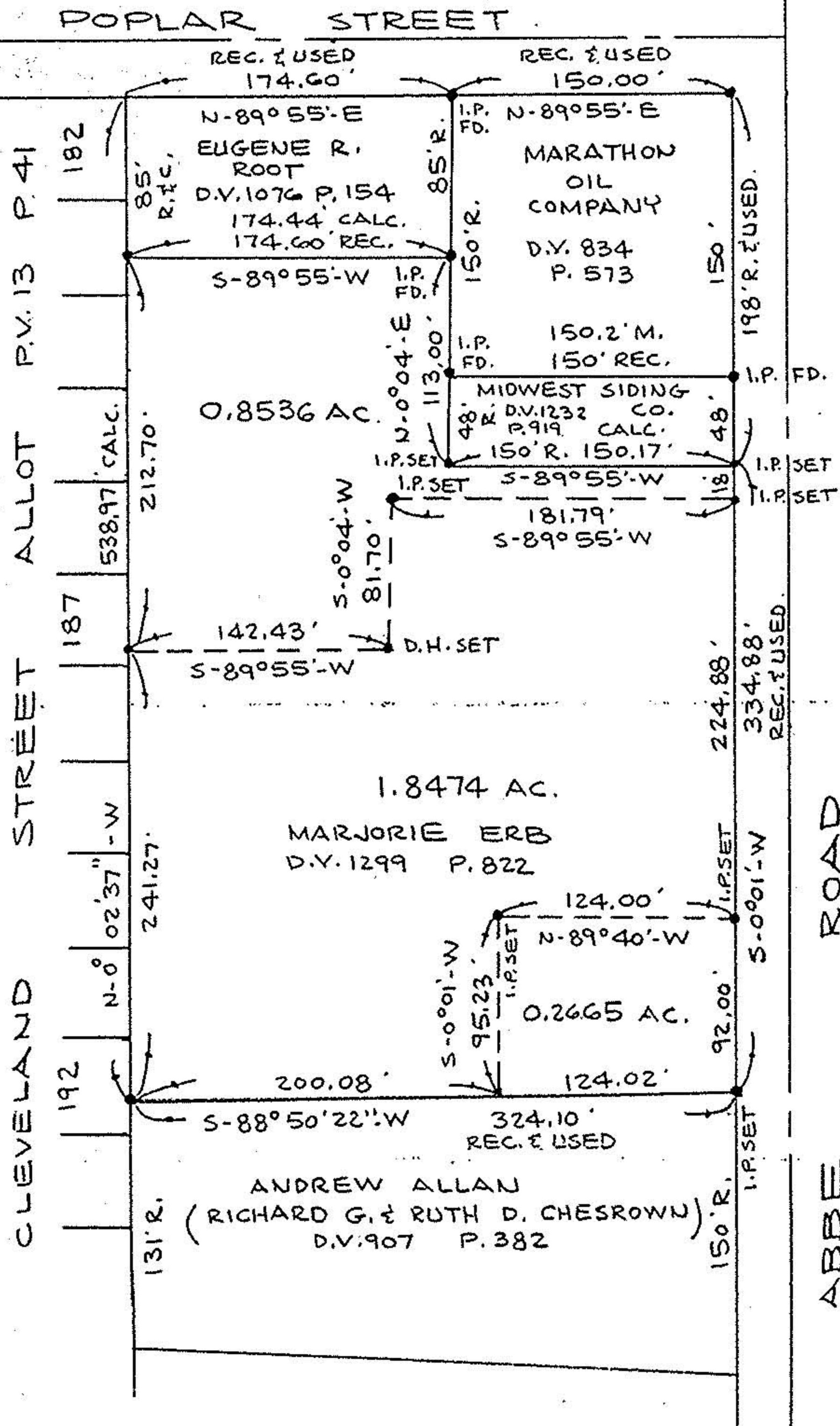


#18416

06-25-021-106-

6-88



NORTH

1" = 100'

#18416

APPROVED
LORAIN CO.
MAP DEPT.

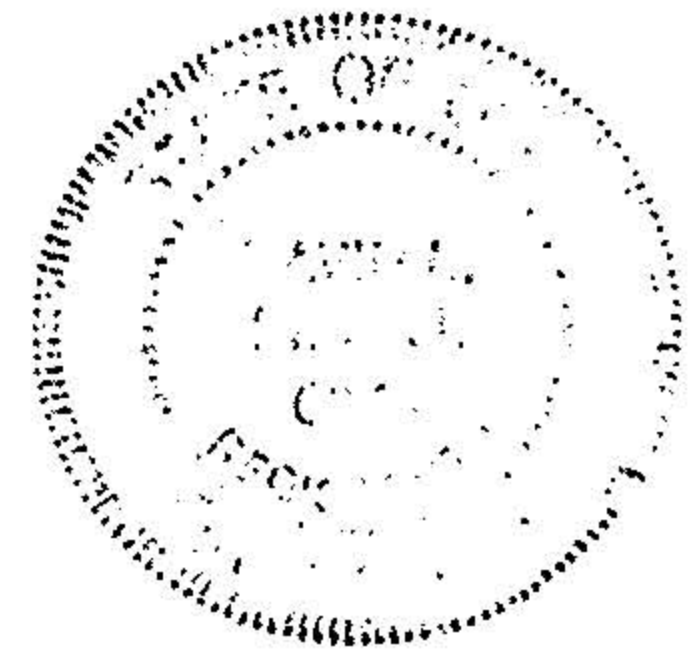
DATE 5-18-89

PAGE 6-88

BY Carol Francis

VOID
AFTER: David L. Elwell

REG. SURV. NO. 6333



BOUNDARY SURVEY
PART OF ELYRIA TWP.
ORIG. LOT 21 - E. OF RIVER
CITY OF ELYRIA
COUNTY OF LORAIN
STATE OF OHIO

PREPARED BY:
KS ASSOCIATES INC.
ENGINEERS SURVEYORS