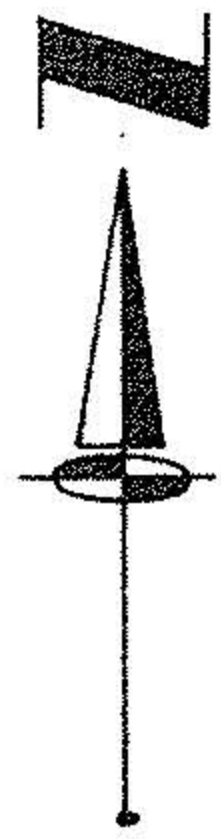
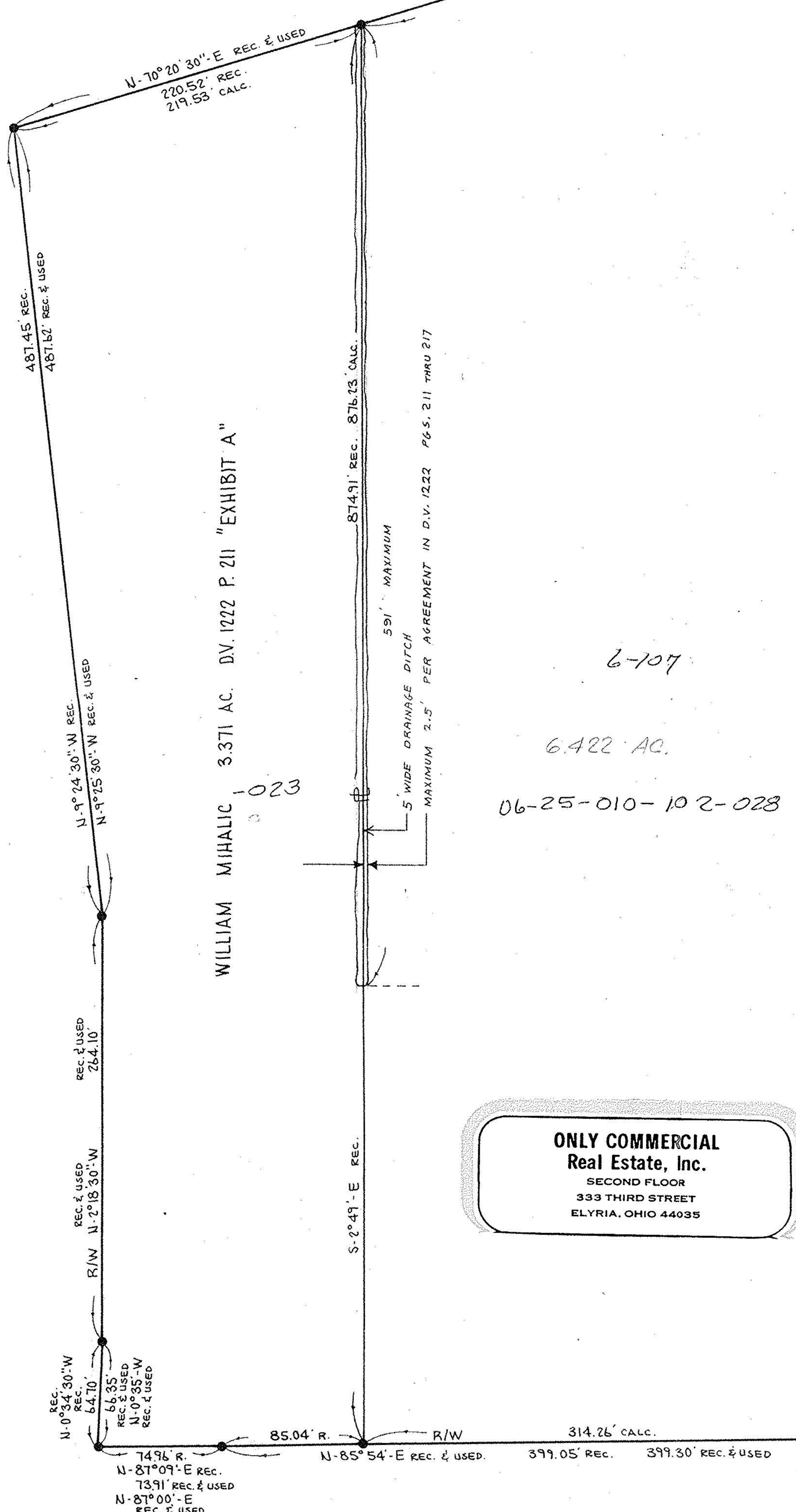


OHIO STATE ROUTE 57



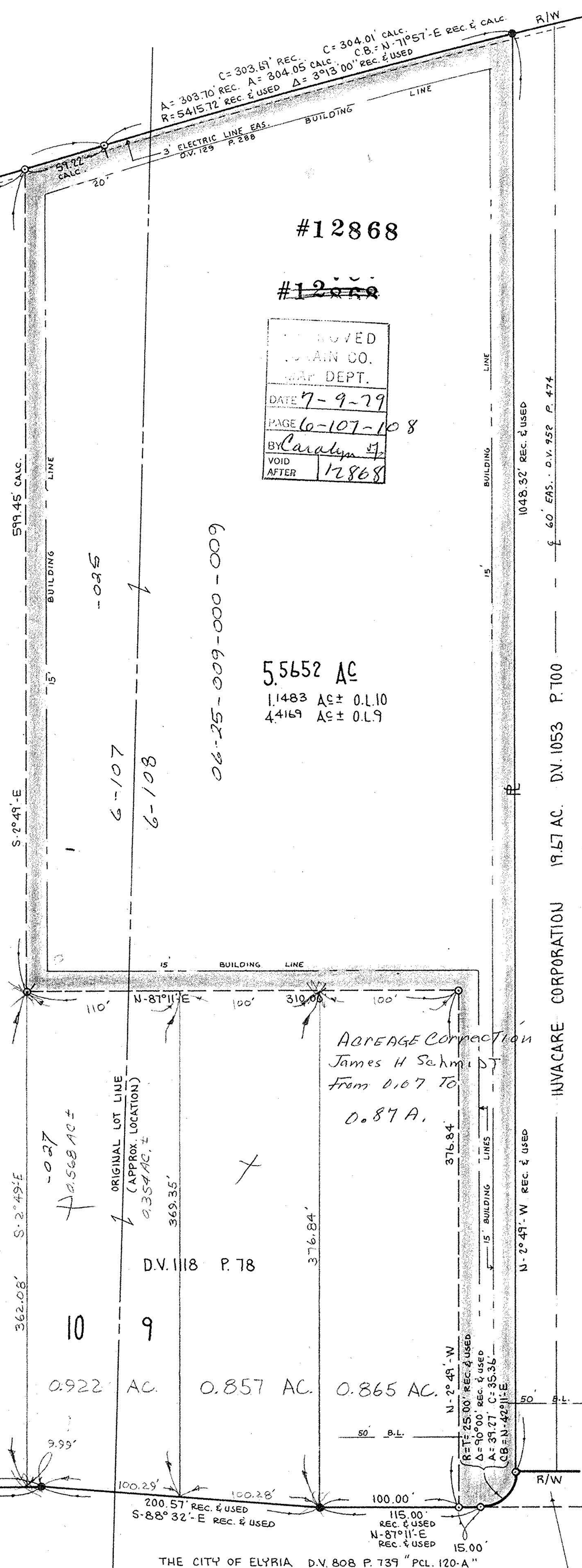
PENN-CENTRAL RAILROAD
(NEW YORK CENTRAL RAILROAD D.V. 484 P. 71)



WILLIAM MIHALIC 3.371 AC. D.V. 1222 P. 211 "EXHIBIT A"

ONLY COMMERCIAL
Real Estate, Inc.
SECOND FLOOR
333 THIRD STREET
ELYRIA, OHIO 44035

TAYLOR STREET



#12868

~~#12868~~

REVISED
TOWN CO.
MAP DEPT.
DATE 7-9-79
PAGE 6-107-108
BY Carolyn J.
VOID AFTER 12868

5.5652 AC
1.1483 AC ± 0.110
4.4169 AC ± 0.19

06-25-009-000-009

06-25-010-102-028

6.422 AC

6-107

6-107

6-108

ACREAGE Correction
James H Schmidt
From 0.107 TO
0.87 A.

0.568 AC ±

ORIGINAL LOT LINE
(APPROX. LOCATION)
0.354 AC ±

D.V. 1118 P. 78

0.922 AC

0.857 AC

0.865 AC

THE CITY OF ELYRIA D.V. 808 P. 739 "PCL. 120-A"

GLOVER - MARSH INDUSTRIAL
PARK STREET DEDICATION PLAT
P.V. 24 P. 79

BOUNDARY SURVEY

OF PART OF
ELYRIA TOWNSHIP ORIG. LOTS 9 & 10 - E. OF RIVER
CITY OF ELYRIA COUNTY OF LORAIN STATE OF OHIO

SCALE: 1" = 60' JAN. 23, 1979 REV. 4-16-79 KV.S
REV. 5-16-79

PREPARED BY
KLEINOEDER - SCHMIDT & ASSOC.
CONSULTING ENGINEERS & SURVEYORS

CERTIFICATION

TO: MARIAN WATSON, CHICAGO TITLE INSURANCE COMPANY, AND CONSOLIDATED FREIGHTWAYS.
I HEREBY CERTIFY THAT THE TITLE LINES AND THE LINES OF ACTUAL POSSESSION ARE THE SAME AND THAT THE IMPROVEMENTS ERECTED UPON THE PROPERTY AS SHOWN HEREON DO NOT ENCRUMBER OVER STREET OR TITLE LINES OR OVER ANY EASEMENTS OR RIGHTS OF WAY AND THAT THIS SURVEY ACCURATELY DEPICTS THE STATE OF FACTS AND THAT THERE ARE NO EASEMENTS OR ENCROACHMENTS AFFECTING THE PROPERTY OTHER THAN SHOWN HEREON.

1-23-79

DATE OF SURVEY

CERTIFICATE REVISED 4-20-79

JAMES H. SCHMIDT
REG. SURVEYOR NO. 4846

7903