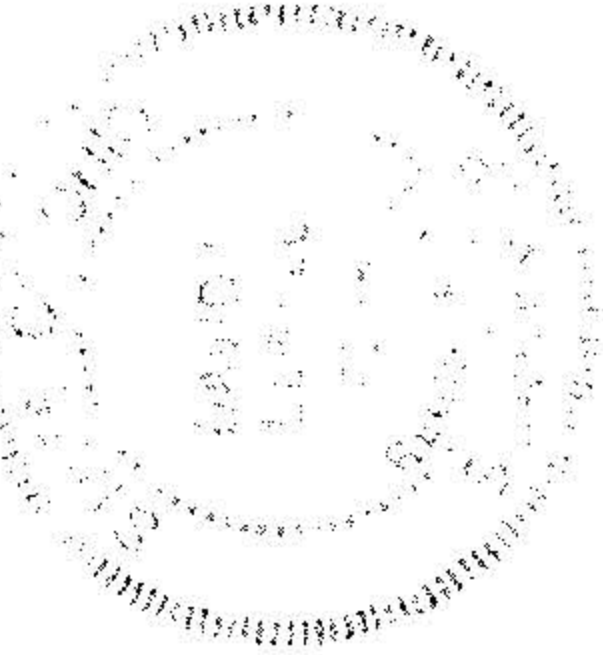


UPDATED & REVISED (10-10-91)
KS ASSOCIATES INC.
 ENGINEERS SUPERVISORS



David S. Schmidt
 REG. SURV. NO. 6323

1.0663 AC. PCL., 1.1357 AC. PCL., 25.437 AC. PCL.

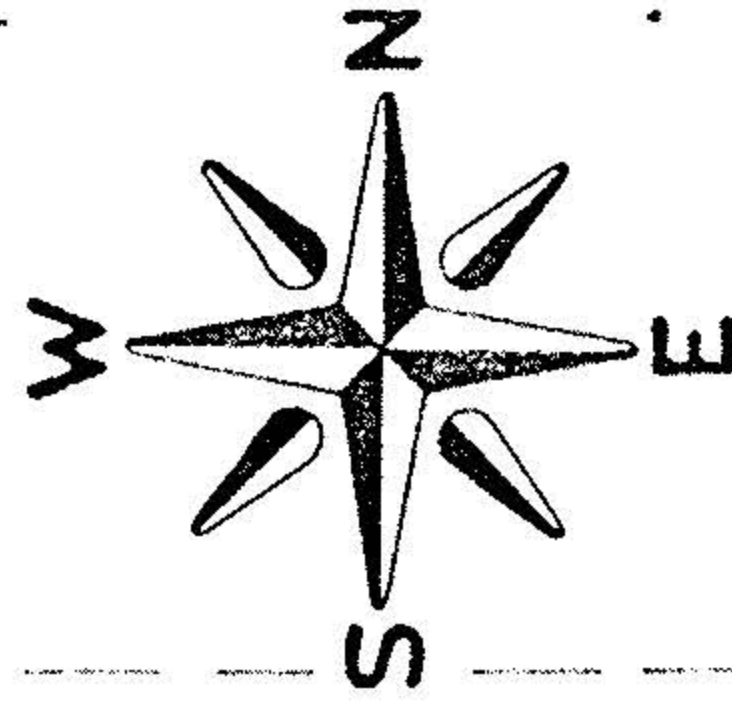
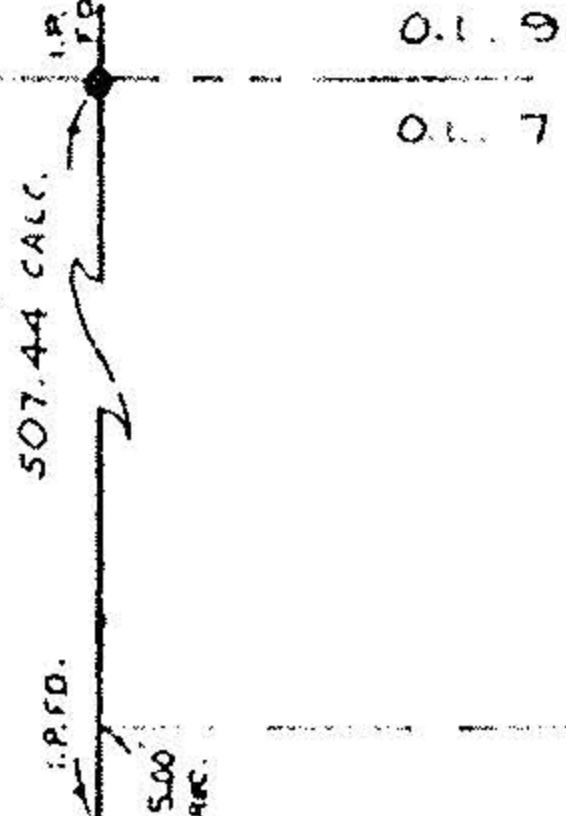
PARCEL	AREA
(A)	0.1171 AC.
(B)	0.0731 AC.
(C)	0.0878 AC.
(D)	0.0914 AC.
(E)	0.0644 AC.

0.161 AC.

0.1558 AC.

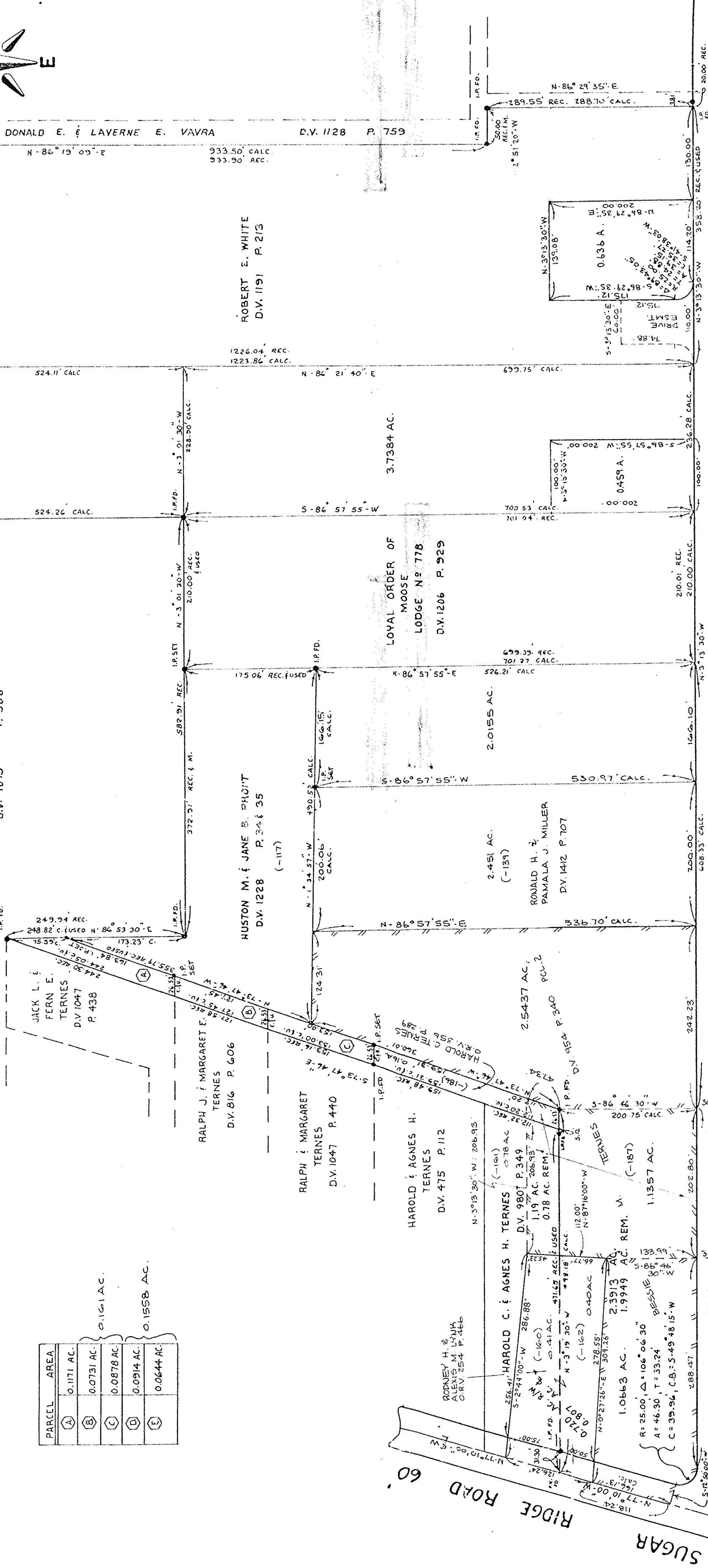
57

EAST R/W S.R. 57



HUSTON M. & JANE B. PROUT
 D.V. 1075 P. 508

2.7212 AC.



AVENUE

TERNES

60'

60'

PROJECT

BOUNDARY SURVEY

OF PART OF
 ORIGINAL ELYRIA TOWNSHIP (EAST OF THE RIVER)
 LOT NO. 7
 CITY OF ELYRIA, COUNTY OF LORAIN
 STATE OF OHIO

Prepared for:

HAROLD TERNES

REV. 12-28-89

REV. 1-02-89

REV. 10-10-91

Drawn by: K.V.S.

Checked by:

App. by:

Scale: 1" = 100'

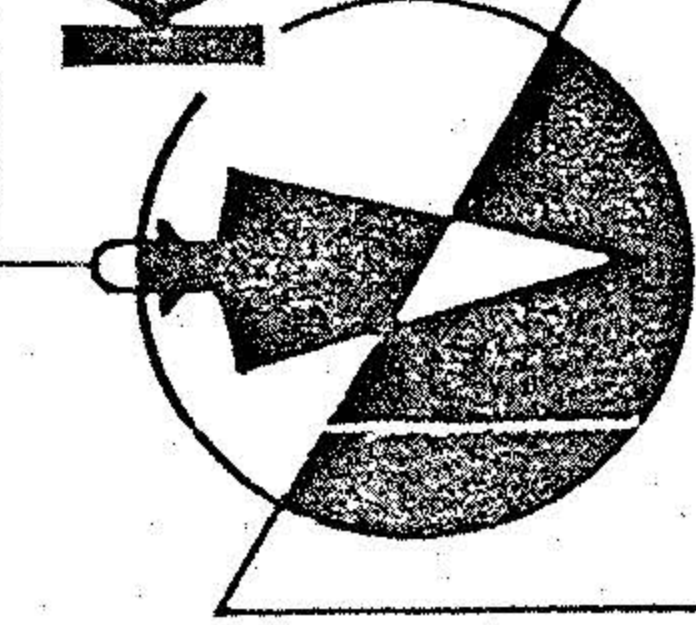
Date: OCTOBER, 1979

REFERENCES

SHEET NO. 1 of 1

JOB NO. 72-97

KLEINOEDER-SCHMIDT
 and ASSOCIATES



ENGINEERS — SURVEYORS — CONSULTANTS IN LAND PLANNING

ELYRIA - NORWALK - MEDINA

OHIO