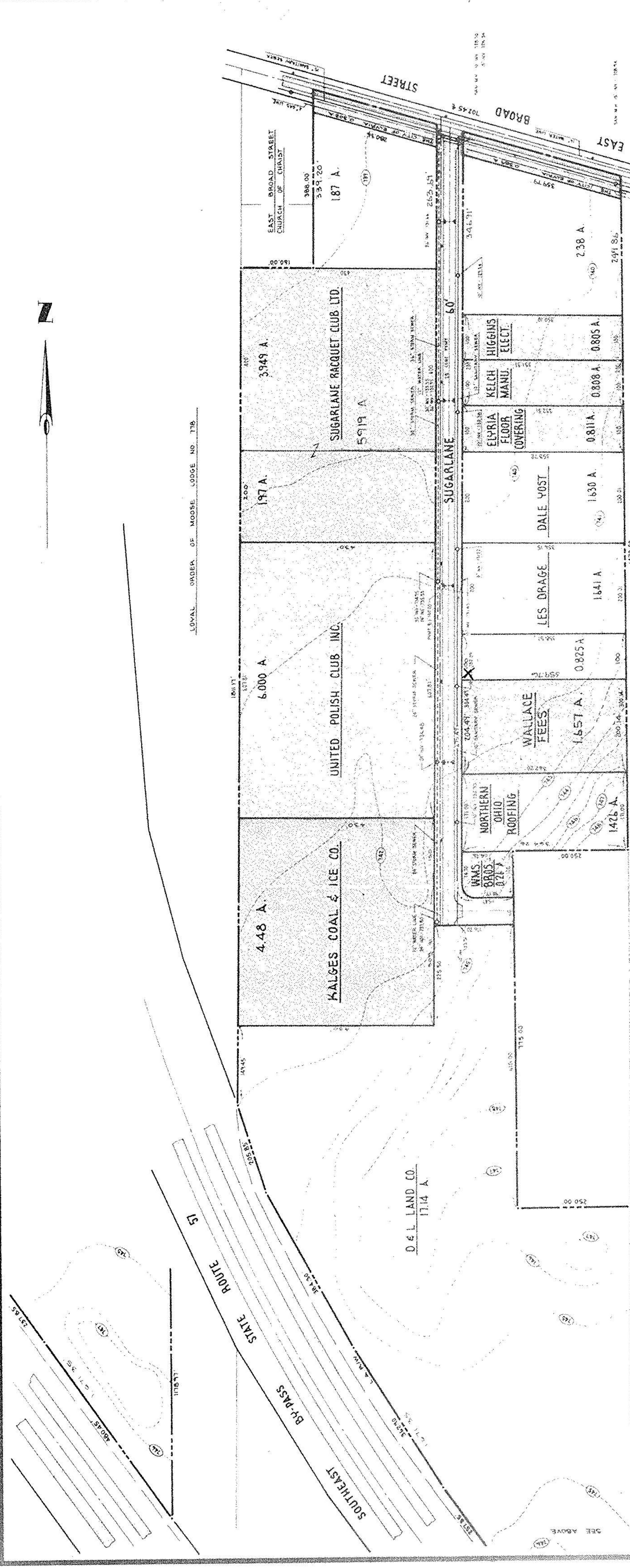


06-25-001-000
06-25-007-000

6-144
6-126



LOYAL ORDER OF MOOSE LODGE NO. 718



RAYMOND H. E. RICHARD A. DULLINGER

#71579

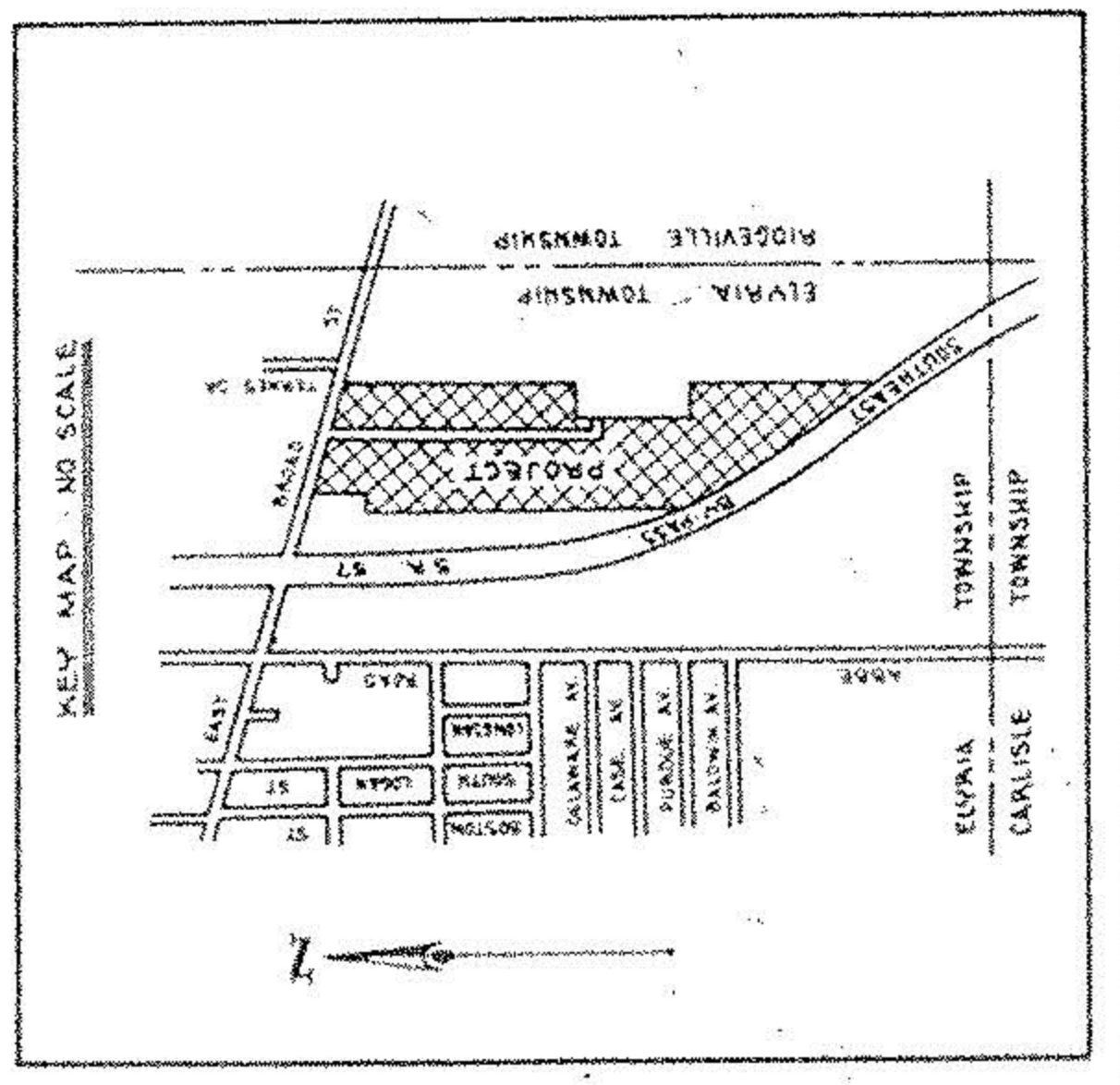
SUGARLANE

INDUSTRIAL PARK

ELYRIA OHIO

DEVELOPED BY:
DALE YOST & LES DRAGE

APPROVED	LORAIN CO.
MAP DEPT.	
DATE	4-21-78
PAGE	6-144
BY	C.Y.
VOID AFTER	11579



KLEINOEDER-SCHMIDT
and ASSOCIATES

ENGINEERS - SURVEYORS - CONSULTANTS IN LAND PLANNING

ELYRIA - NORWALK - MEDINA OHIO