

TOPOGRAPHICAL SURVEY
 OF PART OF
 ORIGINAL ELVIRA TOWNSHIP (EAST OF THE RIVER)
 LOT NO. 7
 CITY OF ELVIRA COUNTY OF LORAIN STATE OF OHIO

ELEVATION OF EAST
 EDGE OF NEIGHBORING
 PAVEMENT.

ELEVATION OF & OF
 SIDEWALK DITCH.

PREPARED BY
JAMES H. SCHMIDT
 REGISTERED SURVEYOR

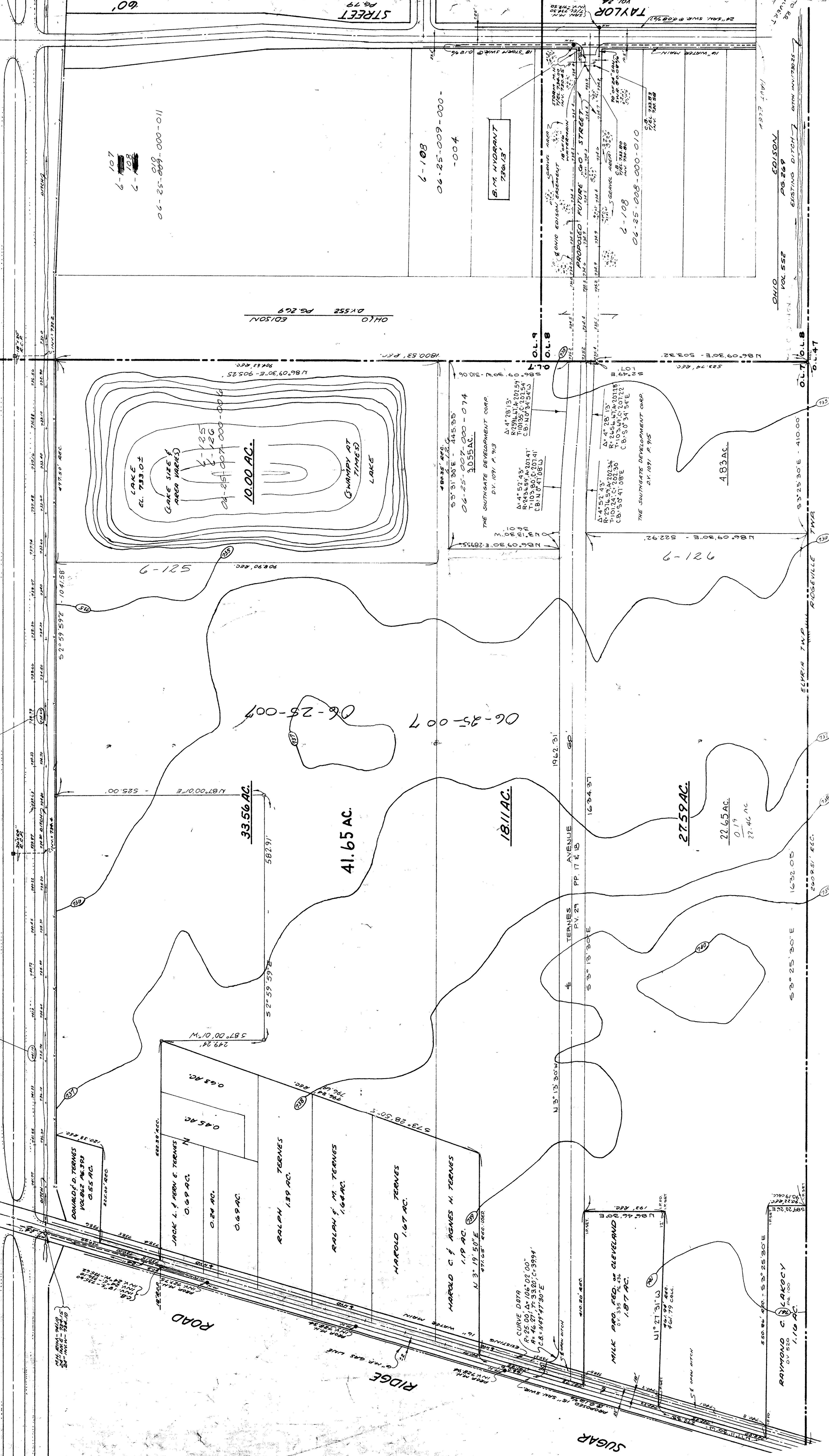
SCALE: 1" = 100'
 31 MAY, 1972

KENNEDY

MEMORIAL

PARKWAY

S.R. 57



DOUGLAS D. TERNES
 VOL. 82 PG. 393
 0.55 AC.

JACK L. & ROSE E. TERNES
 0.69 AC.
 0.24 AC.
 0.69 AC.

RALPH TERNES
 1.39 AC.

RALPH & M. TERNES
 1.64 AC.

HAROLD TERNES
 1.67 AC.

HAROLD C. & AGNES H. TERNES
 1.19 AC.
 N. 3° 19' 50" E
 471.68' REC. 1022

MILK PRO. CO. OF CLEVELAND
 0.335 AC. 3/4
 1.57 AC.

RAYMOND C. LAROCY
 0.550 AC. 100
 1.16 AC.

33.56 AC.
 582.91'
 52° 59' 59" E - 1041.58'

41.65 AC.
 18.11 AC.
 27.59 AC.
 22.65 AC.
 0.19
 22.46 AC.

10.00 AC.
 LAKE EL. 733.0±
 (LAKE SIZE & AREA MARKS)
 6-125
 6-126

6-107
 6-108
 6-109
 06-25-009-000-011
 6-103
 06-25-009-000-004
 B.M. HYDRANT
 736.13'

06-25-007-000-074
 3.055 AC.
 THE SOUTHGATE DEVELOPMENT CORP.
 D.V. 1091, P. 9/3
 Δ 4° 28' 13"
 R 1036.14, 20151.0
 T 103.80, 0.70741'
 C.B. 103° 37' 34.1 W

THE SOUTHGATE DEVELOPMENT CORP.
 D.V. 1091, P. 9/5
 Δ 4° 52' 43"
 R 1036.14, 20151.0
 T 103.80, 0.70741'
 C.B. 103° 37' 34.1 W

OHIO
 DV 552 PG 269
 EDISON

TAYLOR
 VOL 24
 PG 24
 TAYLOR

OHIO
 DV 552 PG 269
 EDISON