

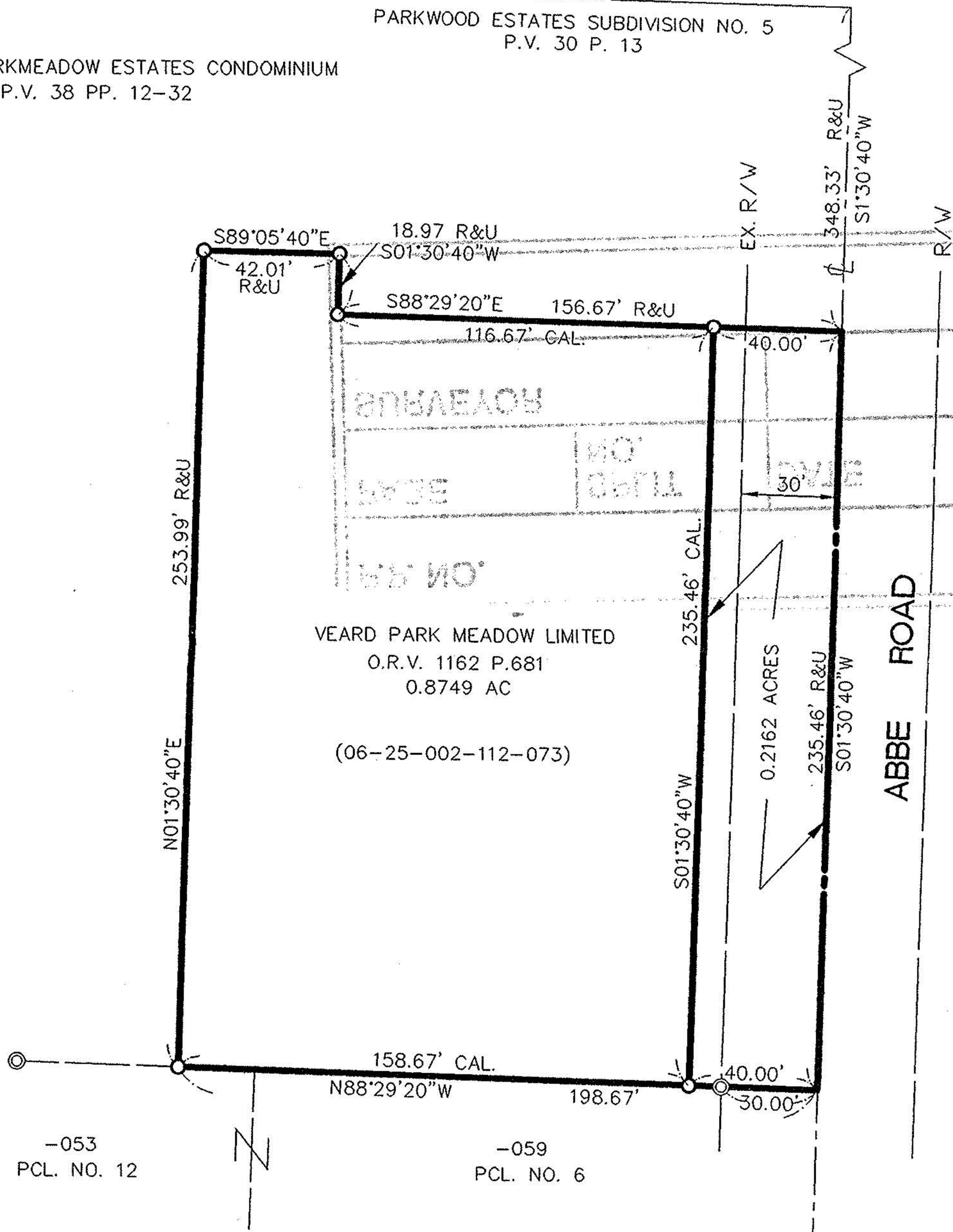
SURVEY MAP

PART OF ORIGINAL ELYRIA
TOWNSHIP LOT NO. 2
EAST OF BLACK RIVER
CITY OF ELYRIA
COUNTY OF LORAIN
STATE OF OHIO

BOWLING GREEN CIRCLE 60' R/W

PARKWOOD ESTATES SUBDIVISION NO. 5
P.V. 30 P. 13

PHASE IV PARKMEADOW ESTATES CONDOMINIUM
P.V. 38 PP. 12-32



#22123

APPROVED
LORAIN CO.
MAP DEPT.
DATE 3-30-97
PAGE 6-142
BY R. BELL
VOID AFTER # 22123

ELDEN PROPERTIES
LIMITED PARTNERSHIP
O.R.V.639 P.180

LEGEND

- ⊙ - IRON PIN/PIPE FOUND
- - IRON PIN/PIPE SET
- R/REC - RECORD
- C/CAL - CALCULATED
- M - MEASURED

BASIS OF BEARINGS: S 01°30' 40" W ON THE
CENTERLINE OF ABBE ROAD FROM RECORD PLAT
PHASE IV PARKMEADOW ESTATES CONDOMINIUM
AS RECORDED IN P.V. 38 P. 12 OF THE LORAIN
COUNTY RECORD OF PLATS



SCALE IN FEET
1" = 40'



David L. Elwell
DAVID L. ELWELL, REG. SURVEYOR NO. 6333

KS ASSOCIATES, INC.

ENGINEERS/SURVEYORS
424 Middle Avenue
P.O. Box 99
Elyria, Ohio 44036

