

SURVEY MAP

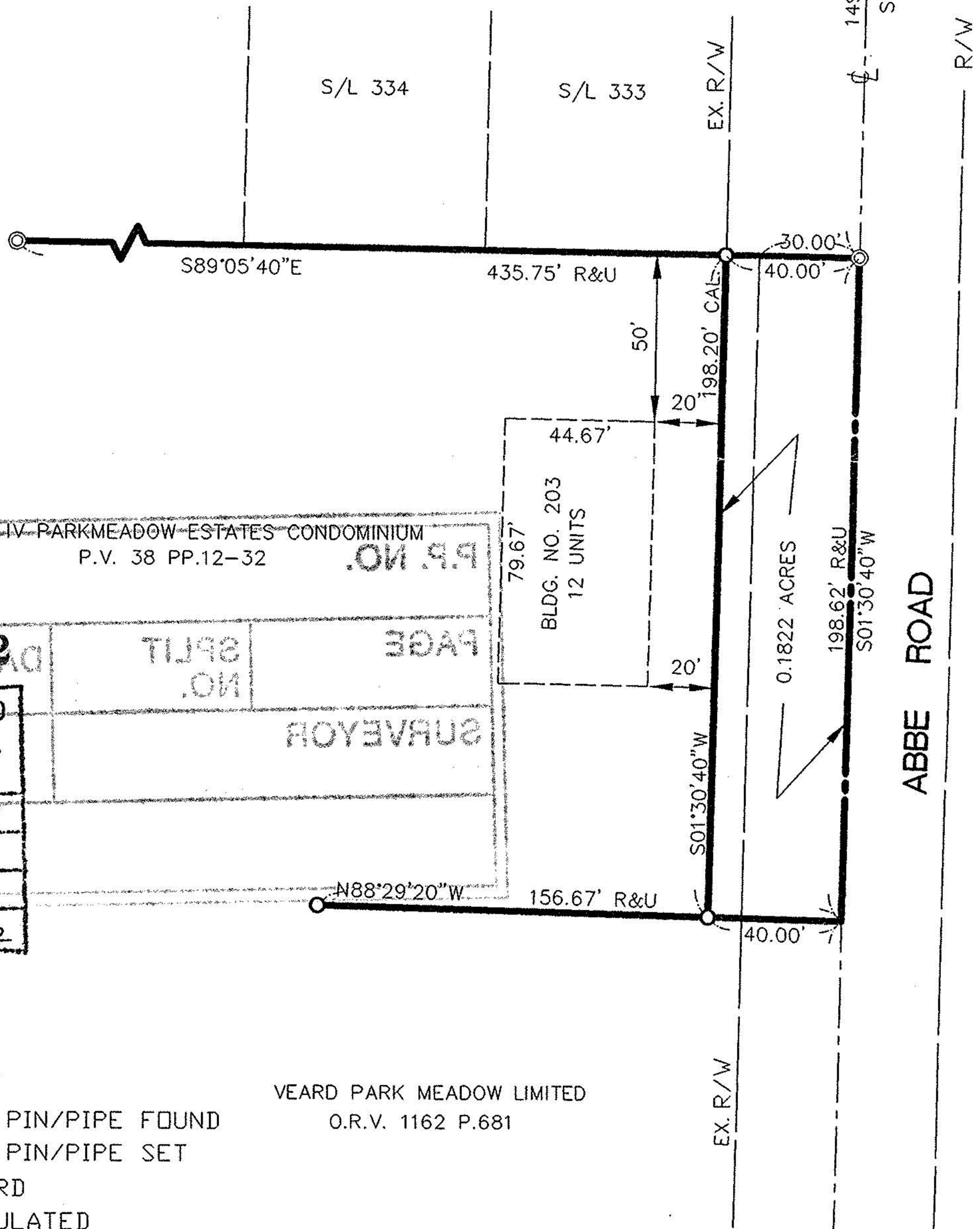
PART OF PHASE IV PARKMEADOW
CONDOMINIUM - P.V. 38 PP. 12-32
CITY OF ELYRIA
COUNTY OF LORAIN
STATE OF OHIO



BOWLING GREEN CIRCLE 60' R/W

PARKWOOD ESTATES SUBDIVISION
NO. 5
P.V. 30 P.13

BEARINGS ARE ASSUMED
FROM P.V. 38 PP. 12-32



PHASE IV PARKMEADOW ESTATES CONDOMINIUM
P.V. 38 PP.12-32

#22122

APPROVED
LORAIN CO.
MAP DEPT.

DATE 4-3-97

PAGE 6-142

BY R. BELL

VOID AFTER # 22122

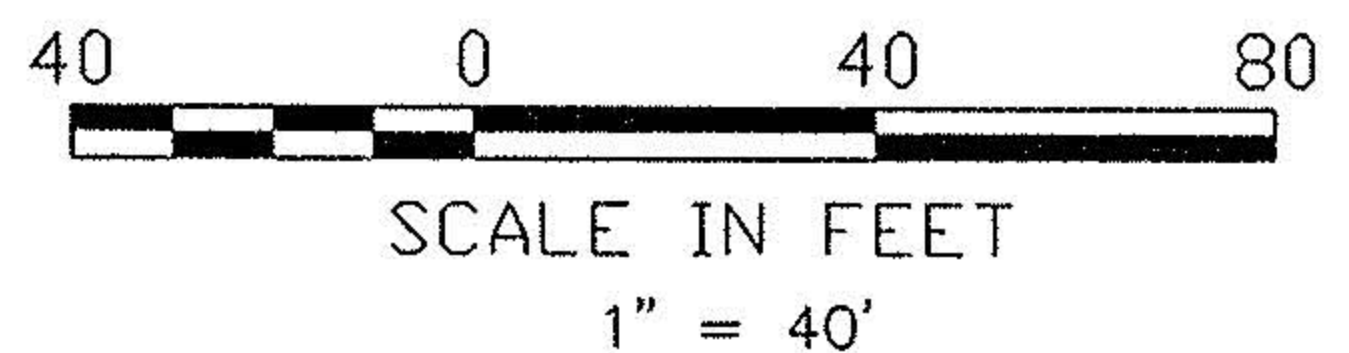
NO. 203
12 UNITS

0.1822 ACRES

LEGEND

- ⊙ - IRON PIN/PIPE FOUND
- - IRON PIN/PIPE SET
- R/REC - RECORD
- C/CAL - CALCULATED
- M - MEASURED

VEARD PARK MEADOW LIMITED
O.R.V. 1162 P.681



David L. Elwell
DAVID L. ELWELL, REG. SURVEYOR NO. 6333

KS ASSOCIATES, INC.
ENGINEERS/SURVEYORS
424 Middle Avenue
P.O. Box 89
Elyria, Ohio 44036

