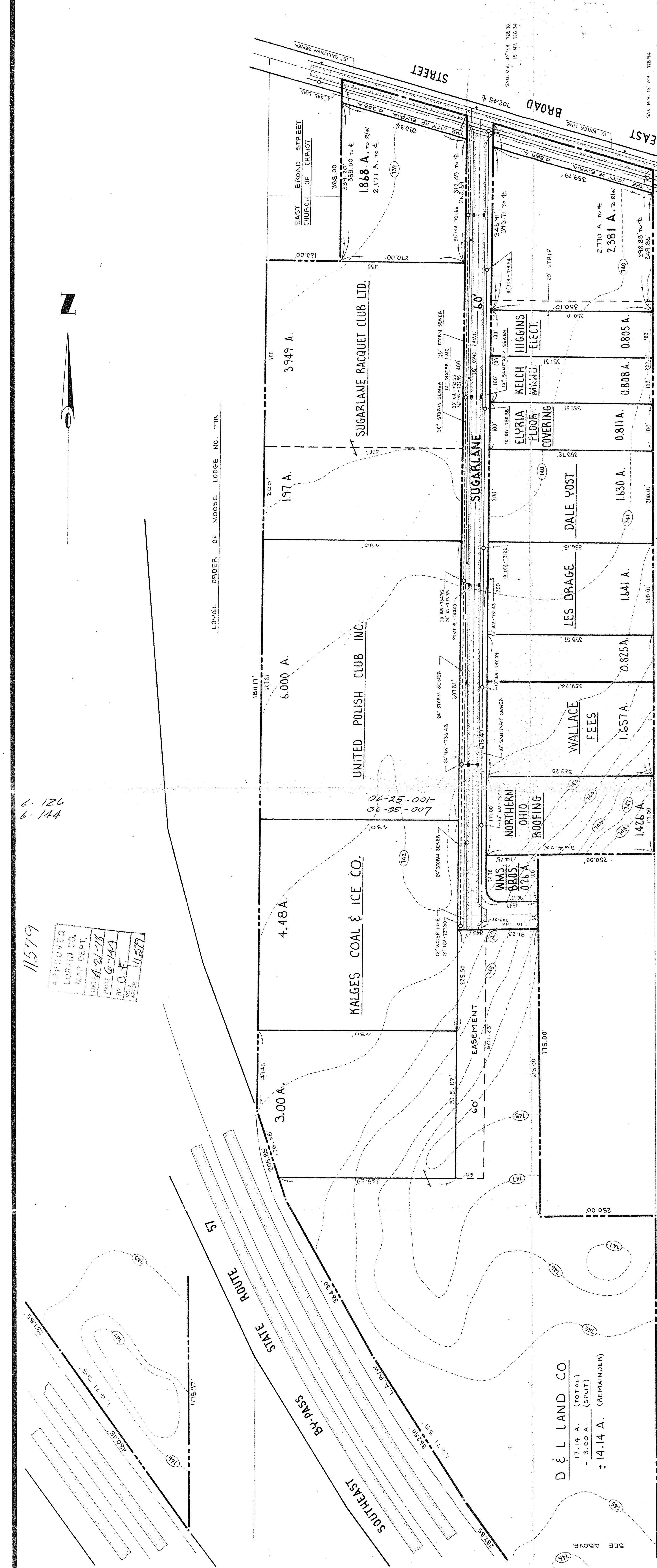


6-126
6-144

11579

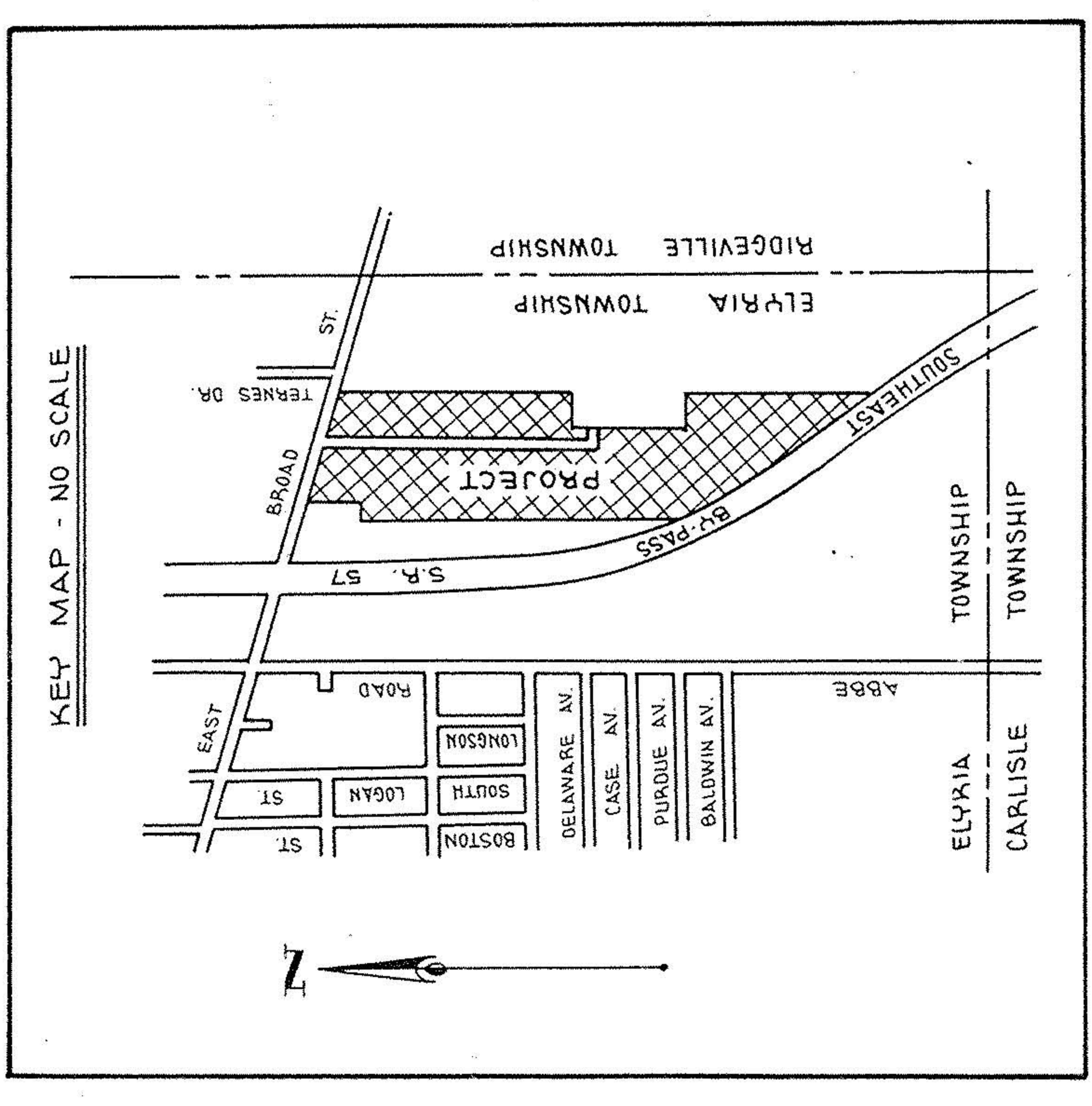
APPROVED
LORAIN CO.
MAP DEPT.
DATE: 6-21-78
PAGE: 6-144
BY: C.T.F.
VOID AFTER: 11579

LOYAL ORDER OF MOOSE LODGE NO. 778



D & L LAND CO.
17.14 A. (TOTAL)
- 3.00 A. (SPLIT)
± 14.14 A. (REMAINDER)

CURVE DATA
A - R = 25.00'
Δ = 89° 18' 30"
A = 39.97'
C = 35.14'
CB = N-45°-41'21"-E
T = 24.50'



SUGARLANE

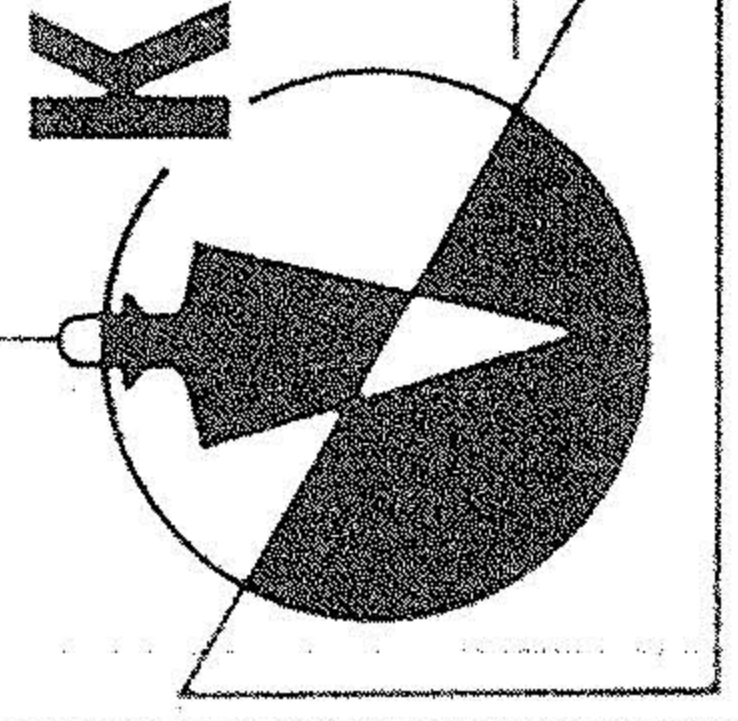
INDUSTRIAL PARK

ELYRIA OHIO

DEVELOPED BY:
DALE YOST & LES DRAGE

RAYMOND H. & RICHARD P. SULLINGER

KLEINODER-SCHMIDT
and ASSOCIATES



ENGINEERS — SURVEYORS — CONSULTANTS in LAND PLANNING
ELYRIA - NORWALK - MEDINA OHIO

06-25-007-000
6-144
(25)

6-144
6-126