

"B" - 0.0058 AC
(255.1 SF)

# 21307	APPROVED
	LORAIN CO.
	MAP DEPT.
	DATE 4-26-95
PAGE # 6-143	
BY CAROLYN FRANCIS	

21307

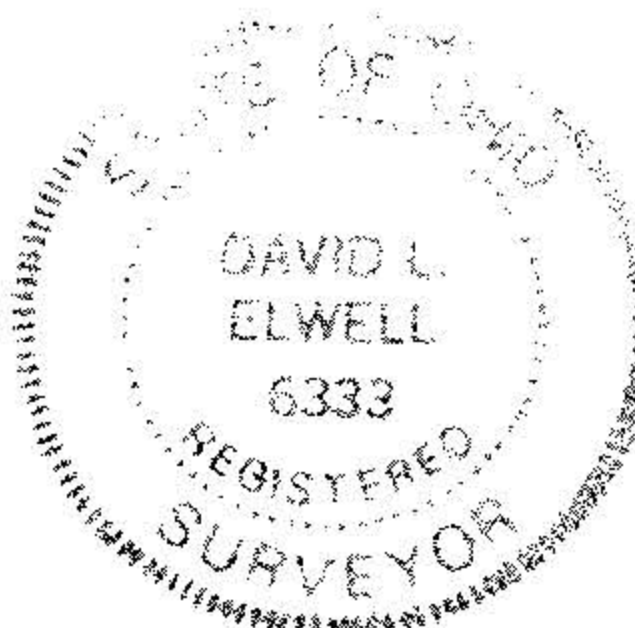


QUEEN ANNE CIRCLE 60'

OAKDALE CIRCLE

PRINTED
APR 27 1995
KS ASSOCIATES, INC.

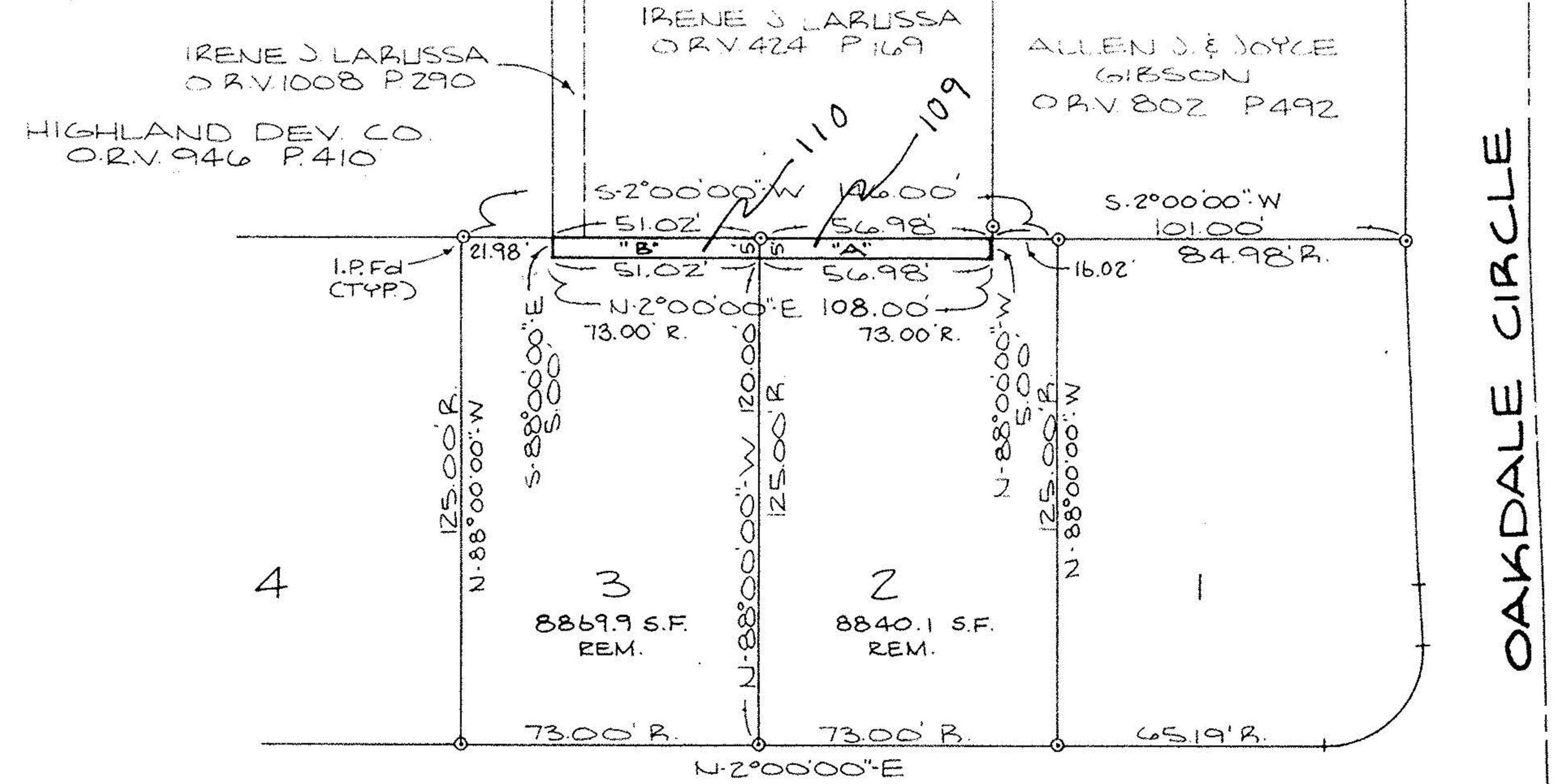
David L. Elwell
REG. SURV. NO. 6333
4-4-95



KS ASSOCIATES INC.
ENGINEERS SURVEYORS
APRIL 3, 1995

SURVEY MAP
PART OF SUBLOT NOS. 2 AND 3 IN
OAKDALE ESTATES SUBDIVISION NO. 1
P.V. 54 P. 36-37
CITY OF ELYRIA COUNTY OF LORAIN
STATE OF OHIO

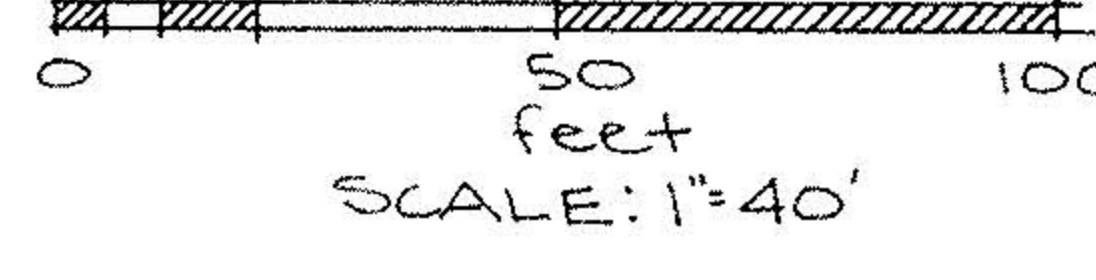
93-746-X1



"B" - 0.0058 AC
(255.1 SF)

# 21307	APPROVED
	LORAIN CO.
	MAP DEPT.
	DATE 4-26-95
PAGE 6-143	
BY CAROLYN FRANCIS	

21307



QUEEN ANNE CIRCLE 60'

OAKDALE CIRCLE

PRINTED
APR 27 1995
KS ASSOCIATES, INC.

David L. Elwell
REG. SURV. NO. 6333
4-4-95



KS ASSOCIATES INC.
ENGINEERS SURVEYORS
APRIL 3, 1995

SURVEY MAP
PART OF SUBLOT NOS. 2 AND 3 IN
OAKDALE ESTATES SUBDIVISION NO. 1
P.V. 54 P. 36-37
CITY OF ELYRIA COUNTY OF LORAIN
STATE OF OHIO

93-746-X1