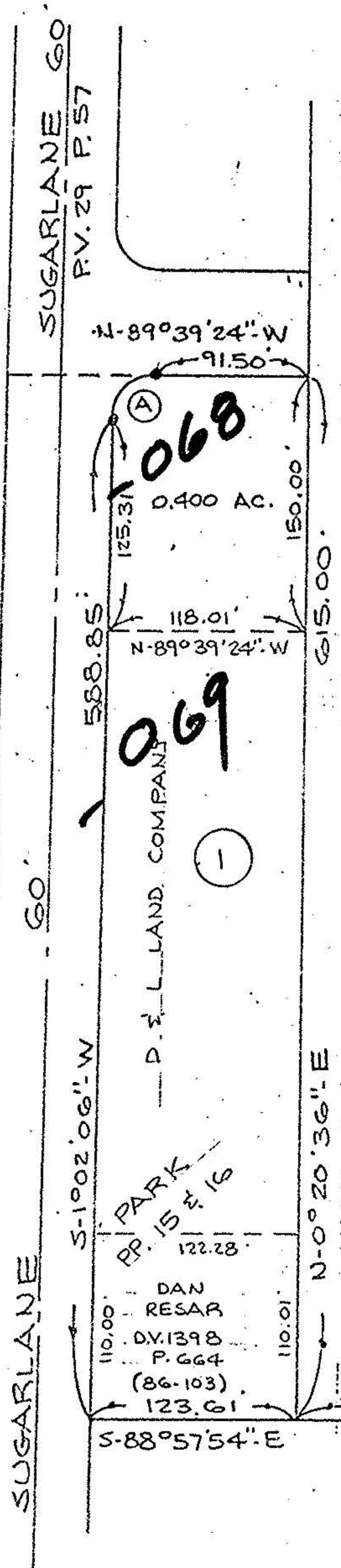


Sublot(s) PART OF NO. 1
Subd'n SUGARLANE INDUSTRIAL PARK

Township ELYRIA Tract E. OF BLACK RIVER
Orig. Lot(s) _____ Sec. _____
County of LORAIN State of Ohio
Corporation CITY OF ELYRIA

NORTH



(A) R = 25.00
T = 24.70
Δ = 89°18'30"
A = 38.97
C = 35.14
S-45°41'21"-W

WILLIAM SCHNEIDER
D.V. 400 P. 398

#17207

APPROVED
LORAIN CO.
MAP DEPT.
DATE 1-9-87
PAGE 6-144
BY C.F.
VOID AFTER 17207

(12)
SUGARLANE INDUSTRIAL
P.V. 36

Prepared for: DALE YOST