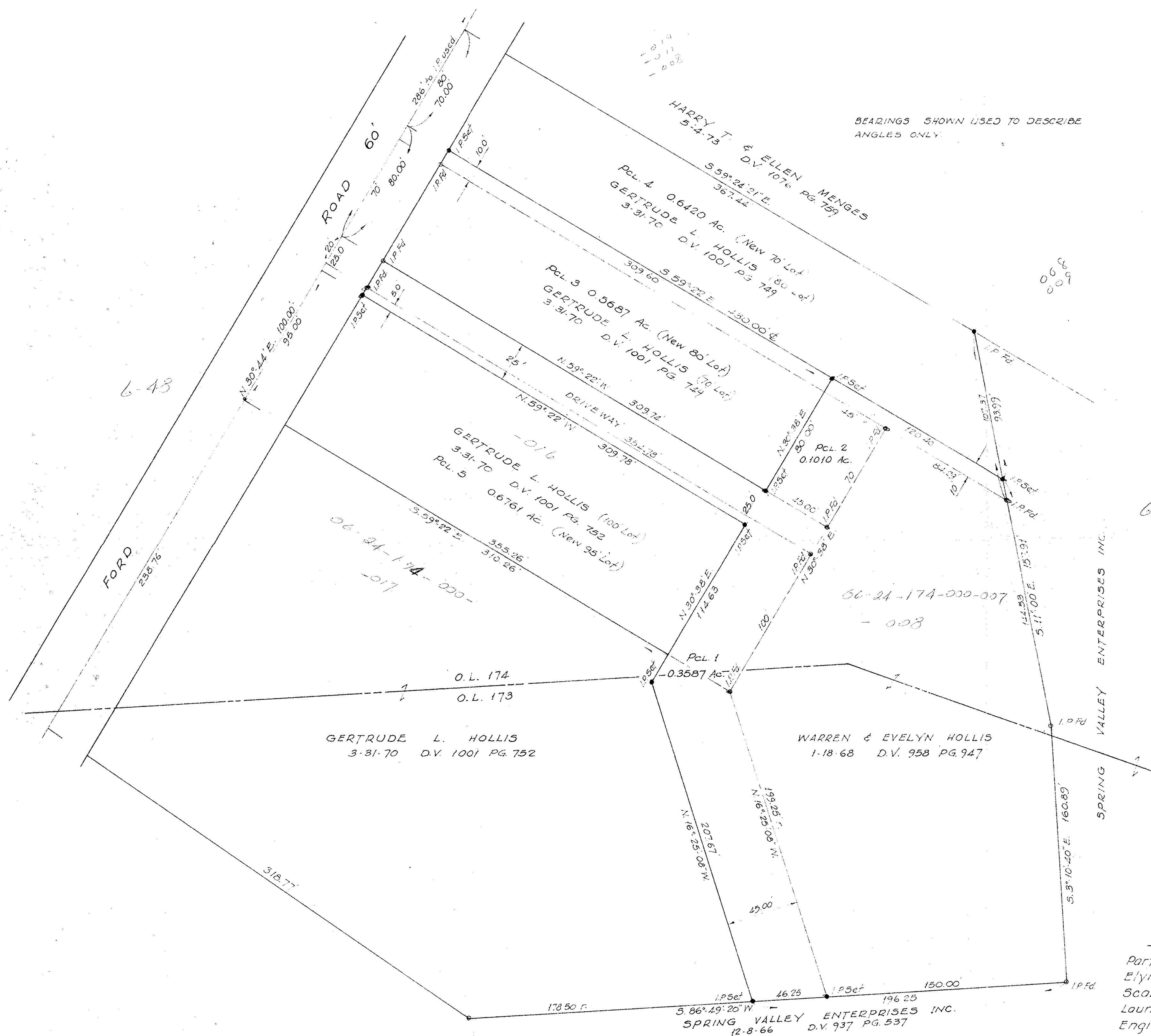


BEARINGS SHOWN USED TO DESCRIBE ANGLES ONLY.



6-43

6-49

FORD
235.76

66-24-174-000-007
-008

GERTRUDE L. HOLLIS
3-31-70 D.V. 1001 PG. 752

WARREN & EVELYN HOLLIS
1-18-68 D.V. 958 PG. 947

SPRING VALLEY ENTERPRISES INC.
D.V. 937 PG. 537
12-8-66

Survey for
Warren E. & Evelyn Hollis
Part of O.L.'s 173 & 174 West of Black River
Elyria Twp.-City of Elyria - Lorain Co.-Ohio
Scale 1"=40' June, 1975
Laundon Simon Cahl and Assoc.
Engineers Surveyors Job No 75-400