

S-55°20'-E

10/11/75

6-24-136

#6

0.318 A.
-008

$$63 \cos 0^{\circ}53' = 62.99$$

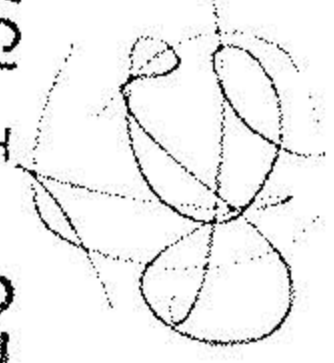
$$62.99 \sec 4^{\circ}05' = 63.15$$

$$3.00 \tan 0^{\circ}53' = 0.05$$

$$3.00 \tan 4^{\circ}05' = \frac{0.21}{0.26}$$

OCT 8 1975

DEC 1 1975



63.0
60.0

168.96'

S-55°20'-E

222.71'

S-55°20'-E

51.47'

39.00

40.0'

55.50'

42'

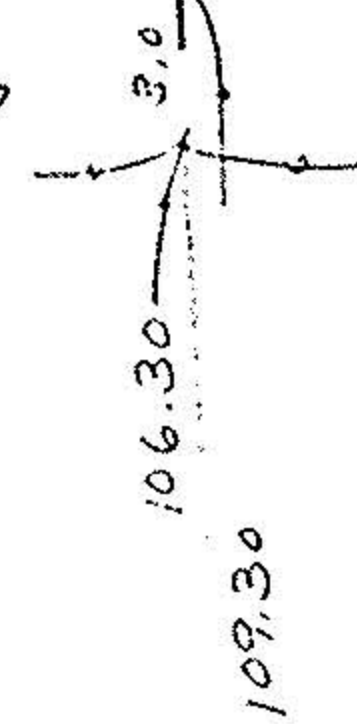
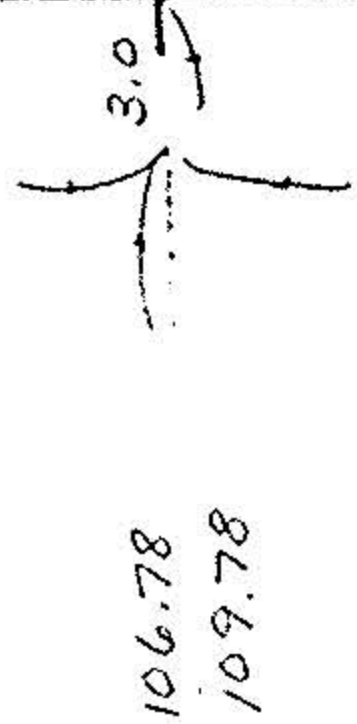
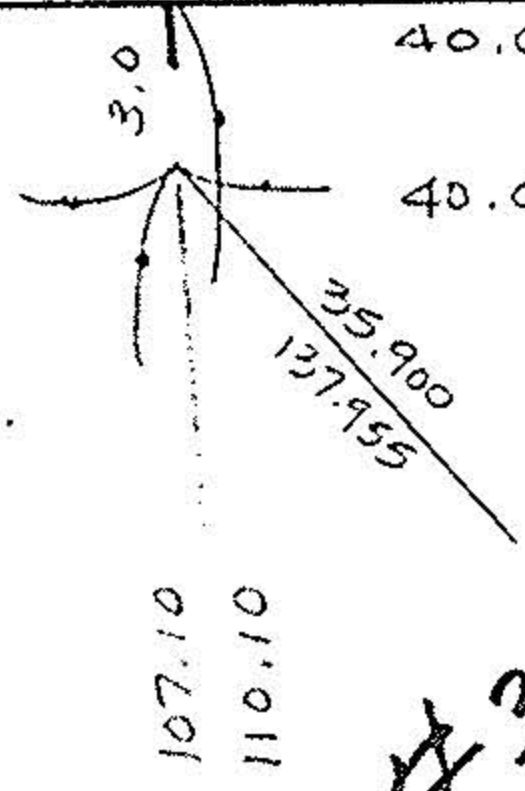
222.97'

40.00

55.50'

42.00

171.34'
60.15'
63.15'



(0.135)
0.126 A. USE

0.087 A.

0.098 A.

0.136 A.

0.102 A.

#1

#2

#3

#4

#5

003

-004

-005

-006

-007

N-35°23'-E

N-33°47'-E

N-33°47'-E

N-33°47'-E

N-33°47'-E

94.7'

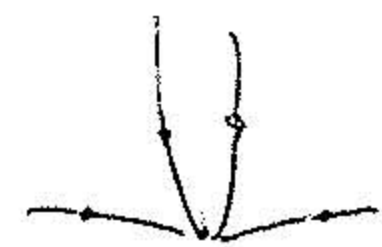
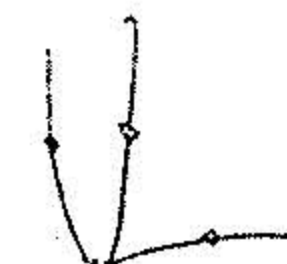
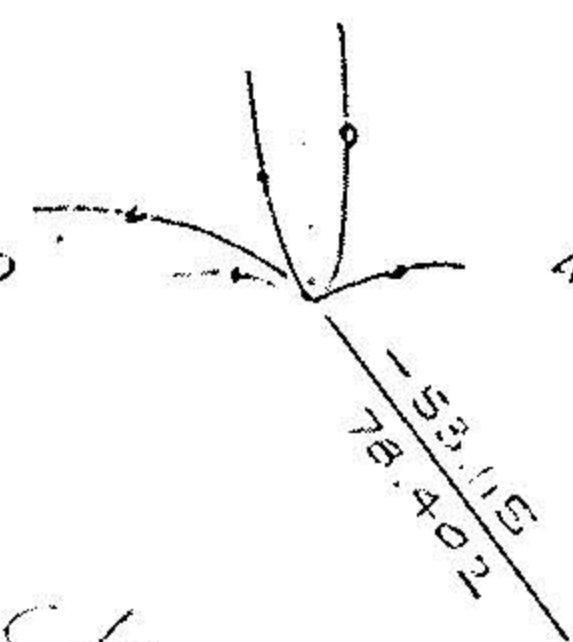
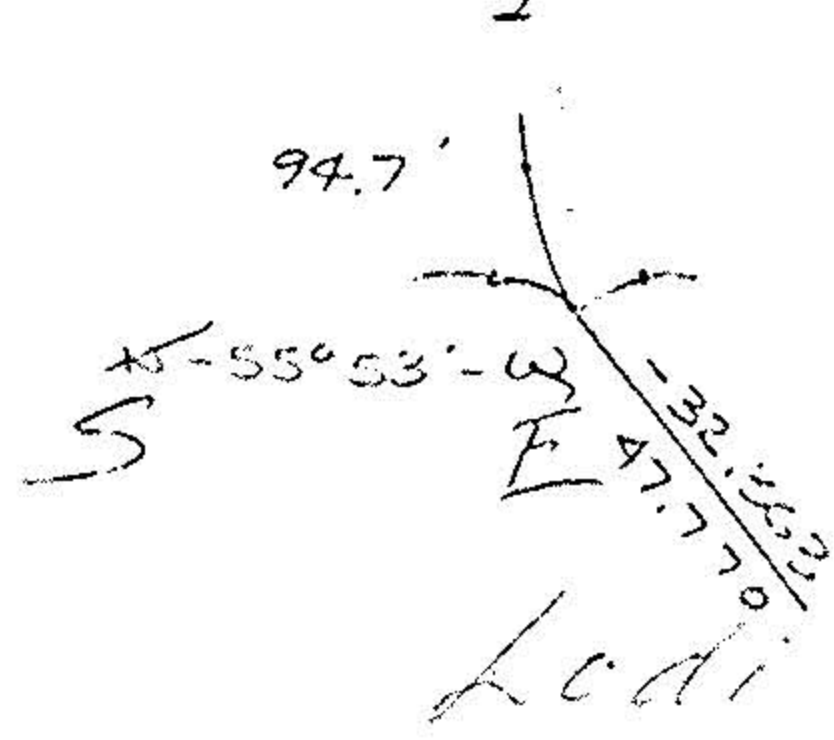
37.00

40.00

55.50

42.00

232.20'



N-38°45'-E
108.19'

67-74-136-000-003

57.70'

Lodi St

06-24-136-030