

BOUNDARY SURVEY

PART OF ELYRIA TOWNSHIP ORIGINAL LOTS NOS 11, 95, & 96

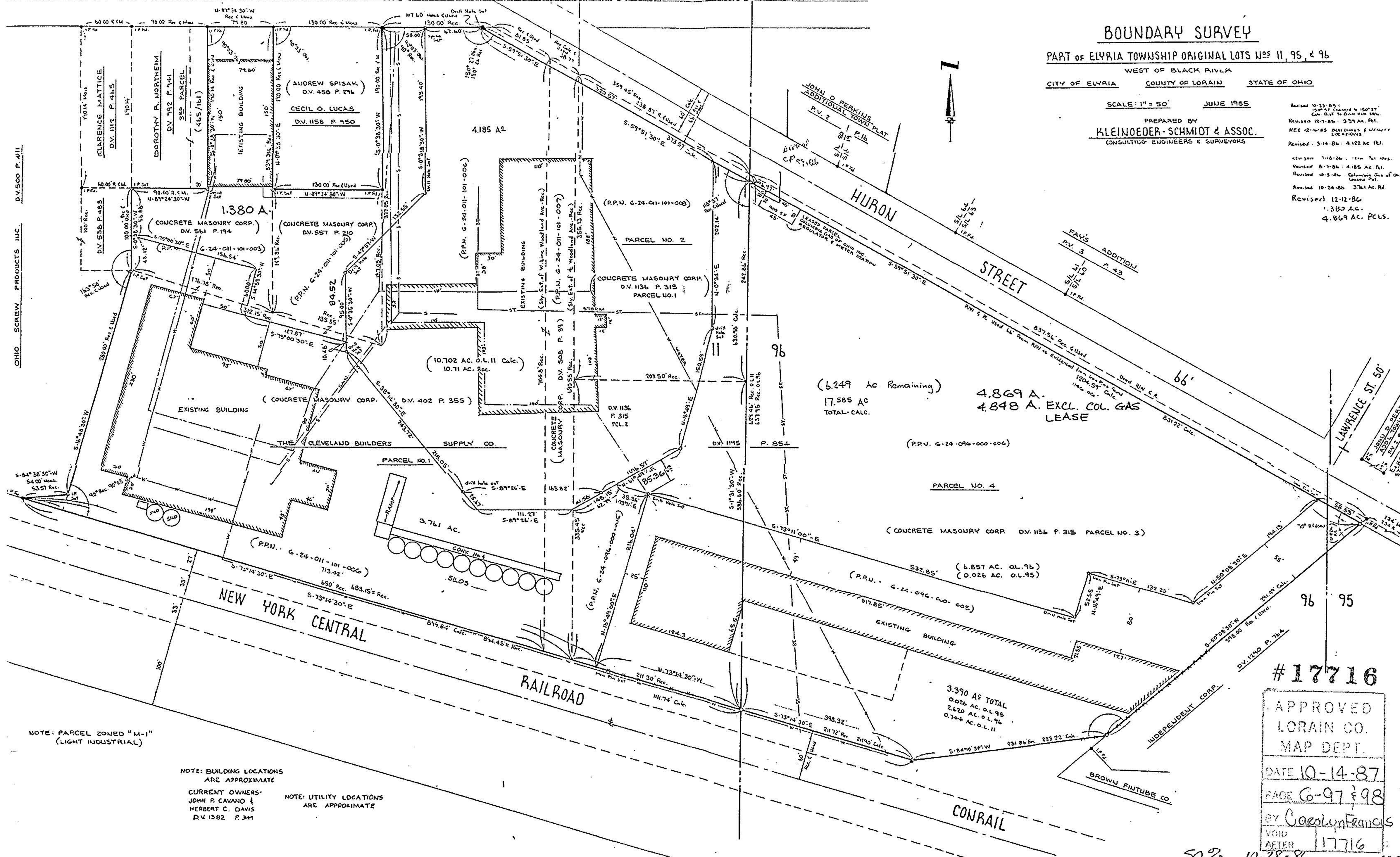
WEST OF BLACK RIVER

CITY OF ELYRIA COUNTY OF LORAIN STATE OF OHIO

SCALE: 1" = 50' JUNE 1985

PREPARED BY
KLEINODER-SCHMIDT & ASSOC.
CONSULTING ENGINEERS & SURVEYORS

Revised 10-25-85: 150'± ELYRIA W 150'± ELYRIA
CON. DIST. TO GAIN MORE DATA
Revised 12-7-85: 337 AC. P.L.
KEY 12-10-85: PARCELS & UTILITIES LOCATIONS
Revised: 3-14-86: 4122 AC. P.L.
Revision 7-18-86: 150'± ELYRIA W 150'± ELYRIA
Revised 8-7-86: 4185 AC. P.L.
Revised 10-3-86: Columbus Geo. of Ohio Landmark Plat.
Revised 10-24-86: 3761 AC. P.L.
Revised 12-12-86: 1380 AC.
4.869 AC. P.C.L.S.



OHIO SCREW PRODUCTS INC. D.V. 500 P. 411

NOTE: PARCEL ZONED "M-1" (LIGHT INDUSTRIAL)

NOTE: BUILDING LOCATIONS ARE APPROXIMATE

CURRENT OWNERS:
JOHN P. CAVANO &
HERBERT C. DAVIS
D.V. 1282 P. 341

NOTE: UTILITY LOCATIONS ARE APPROXIMATE

#17716

APPROVED
LORAIN CO.
MAP DEPT.

DATE 10-14-87

PAGE 6-97 & 98

BY Carolyn Francis

VOID AFTER 17716

50% 10-28-96

P.S. 81