

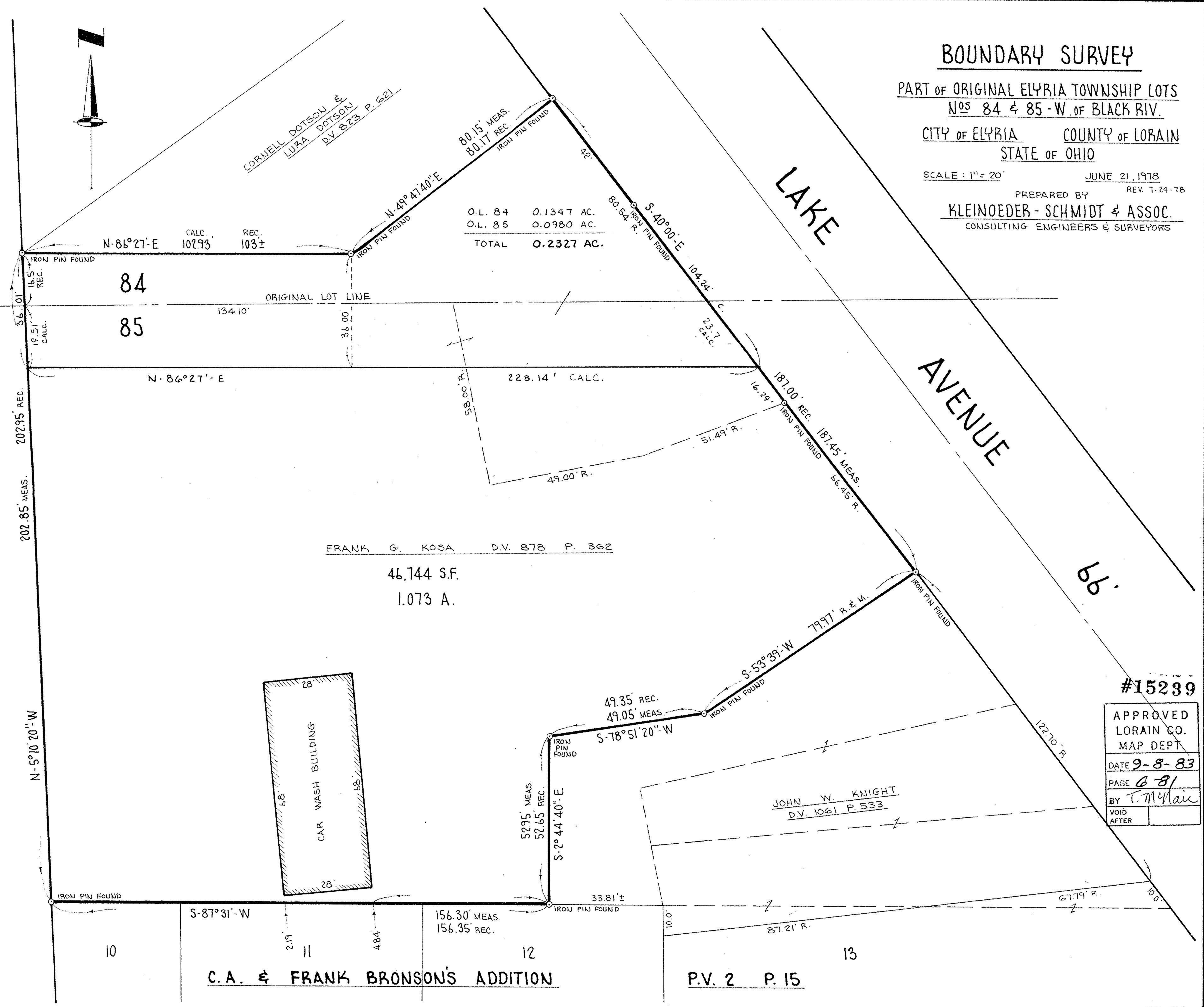
06-24-084-103-0
06-24-085-103

BOUNDARY SURVEY

PART OF ORIGINAL ELYRIA TOWNSHIP LOTS
NOS 84 & 85 - W. OF BLACK RIV.
CITY OF ELYRIA COUNTY OF LORAIN
STATE OF OHIO

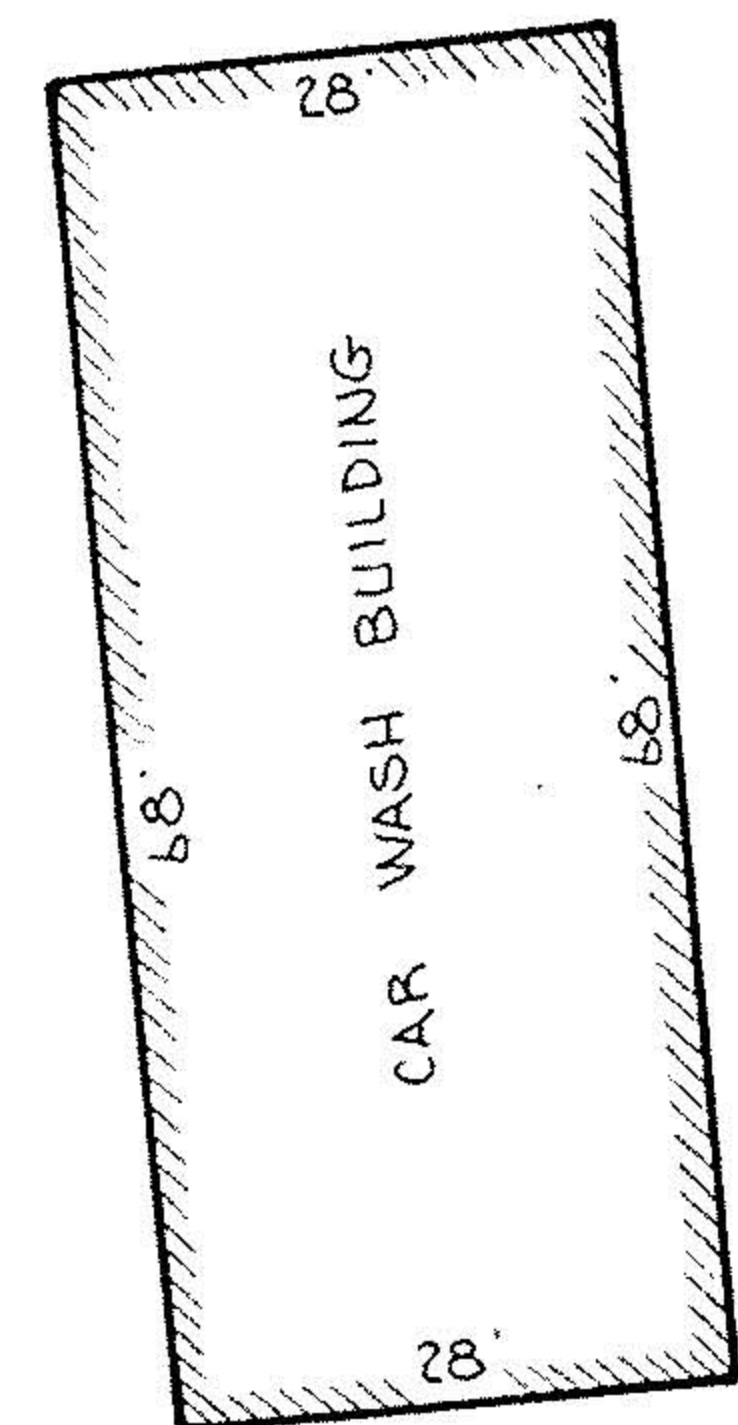
SCALE: 1" = 20' JUNE 21, 1978
REV. 7-24-78
PREPARED BY
KLEINODER - SCHMIDT & ASSOC.
CONSULTING ENGINEERS & SURVEYORS

66
BALTIMORE & OHIO RAILROAD



O.L. 84	0.1347 AC.
O.L. 85	0.0980 AC.
TOTAL	0.2327 AC.

FRANK G. KOSA D.V. 878 P. 362
46,744 S.F.
1.073 A.



#15239
APPROVED
LORAIN CO.
MAP DEPT.
DATE 9-8-83
PAGE 681
BY T. McNeil
VOID AFTER

C.A. & FRANK BRONSON'S ADDITION

P.V. 2 P. 15