

47

-010
1.15 A. DUP.
2.09 A. PL.

-018
10.19 A.
#22525-D

APPROVED
LORAIN CO.
MAY DEPT.
4.26.00
G-55
T.M. McLean
22525-D

THIS PARCEL
ALLOWED TO
TRANSFER w/
SURVEY & UPDATE
LEGAL STAMPED
ON DEED & NOTED
IN COMPUTER

CONNECTOR

PT. 06-24-044-101-048
PT. 16.53 A.

PT. 06-24-044-101-048
PT. 16.53 A.

PT. 06-24-043-101-002
PT. 12.98 A.
TURNPIKE

PT. -003
PT. 13.53 A. TOTAL

PT. -012
PT. 20.43 A.

PT. -023
PT. 7.23 A.

PT. -023
PT. 7.23 A.

-022
6.26 A.

-020
3.12 A.

48

48

T.M. 6-55

OHIO

OHIO

TURNPIKE

TURNPIKE

-025
9.21 A.

-006
0.42 A.

-027
3.39 A.

-018
2.70 A.

-026
3.48 A.

-030
1.89 A.

-015
5.30 A.

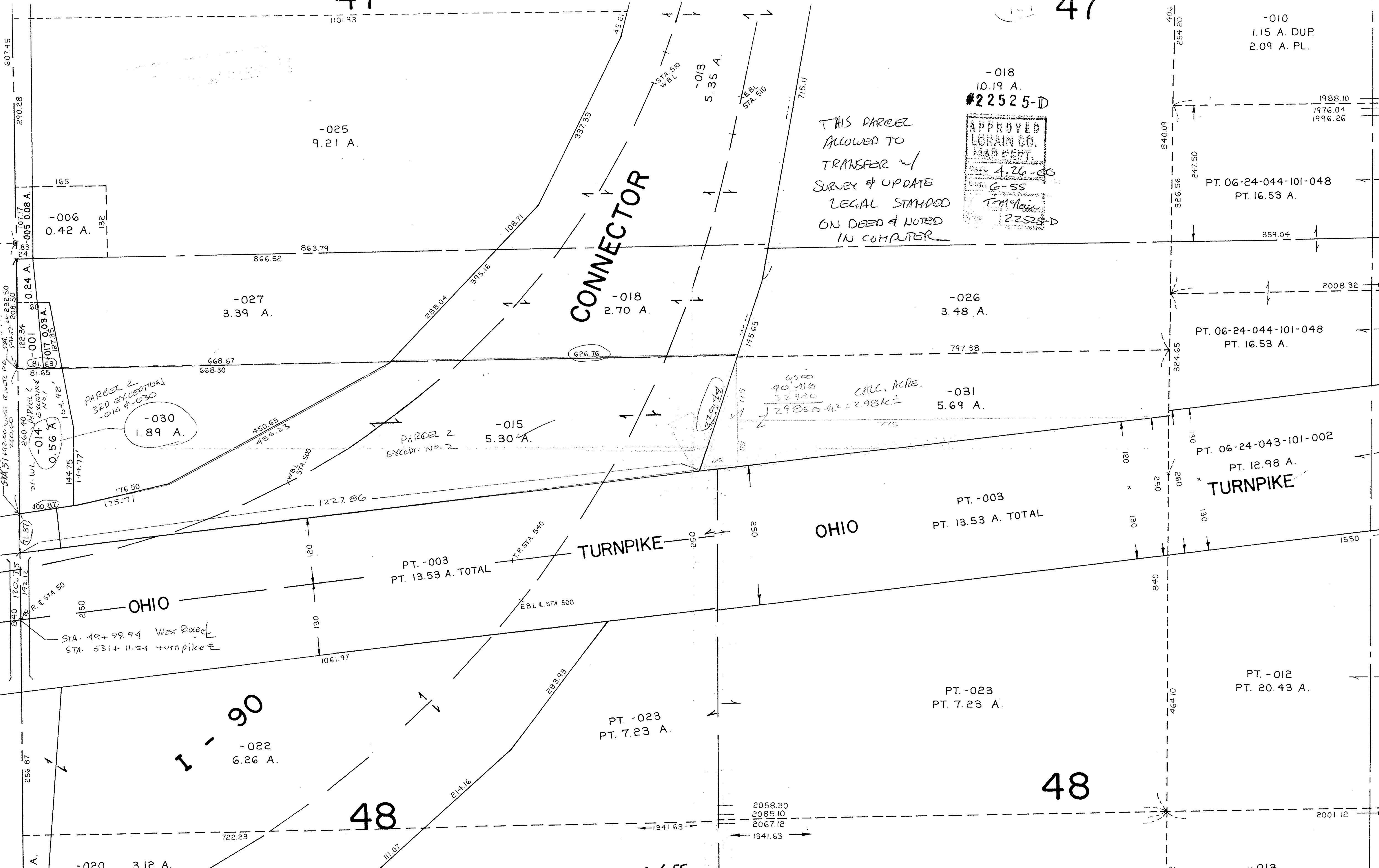
-031
5.69 A.

6500
90.210
32940
29850 +/- = 2.98K +/-
CALC. K.C.R.E.

PARCEL 2
EXCEPT. NO. 2

PARCEL 2
3RD EXCEPTION
-014 # 630

PARCEL 2
EXCEPT. NO. 1
-014
0.56 A.



SEE C-157