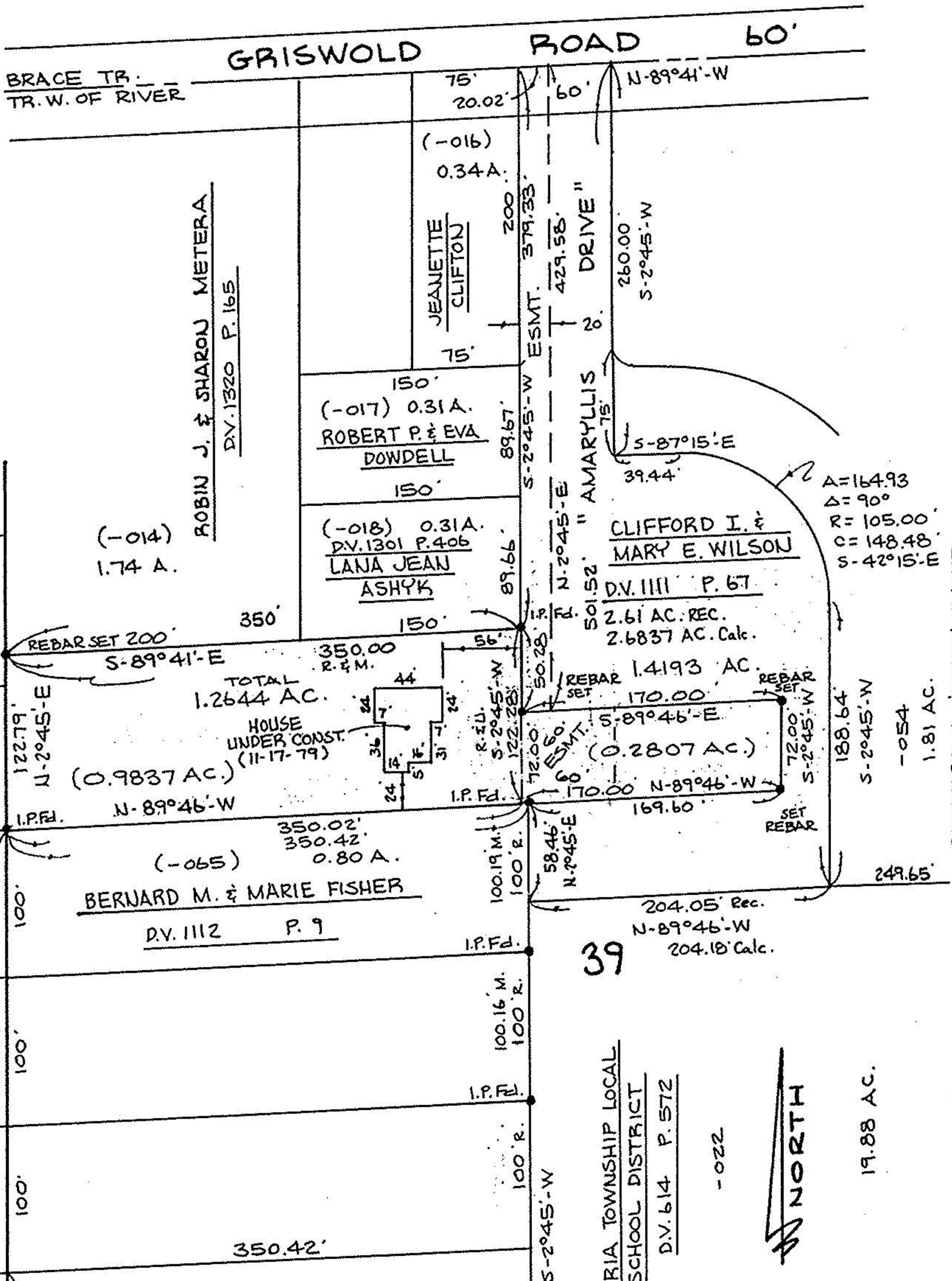


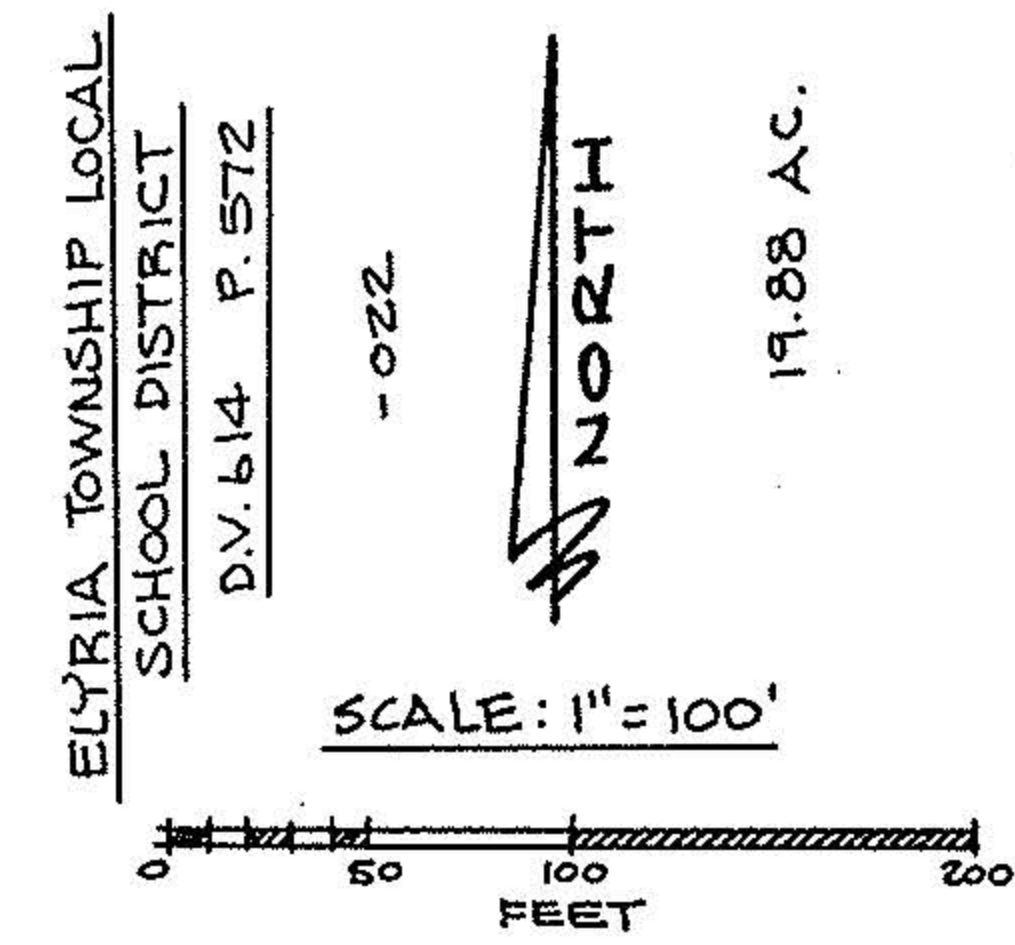
06-24-039-000 - 20286 6-40



20286
 APPROVED
 LORAIN CO.
 MAP DEPT.
 DATE 3-22-93
 PAGE 6-40
 BY CAROLYN FRANCIS
 VOID AFTER # 20286



David L. Elwell
 REG. SURV. No. 6333
 11-19-92 REV. 12-16-92



SURVEY MAP
 PART OF ELYRIA TOWNSHIP ORIGINAL
 LOT NO. 39 - TRACT W. OF RIVER
 TOWNSHIP OF ELYRIA COUNTY OF LORAIN
 STATE OF OHIO
 PREPARED BY
KS ASSOCIATES INC.
 ENGINEERS SURVEYORS
 REV. 1-04-93 REV. 1-14-93
 REV. 1-08-93 REV. 3-10-93 (PINS) 92-496A