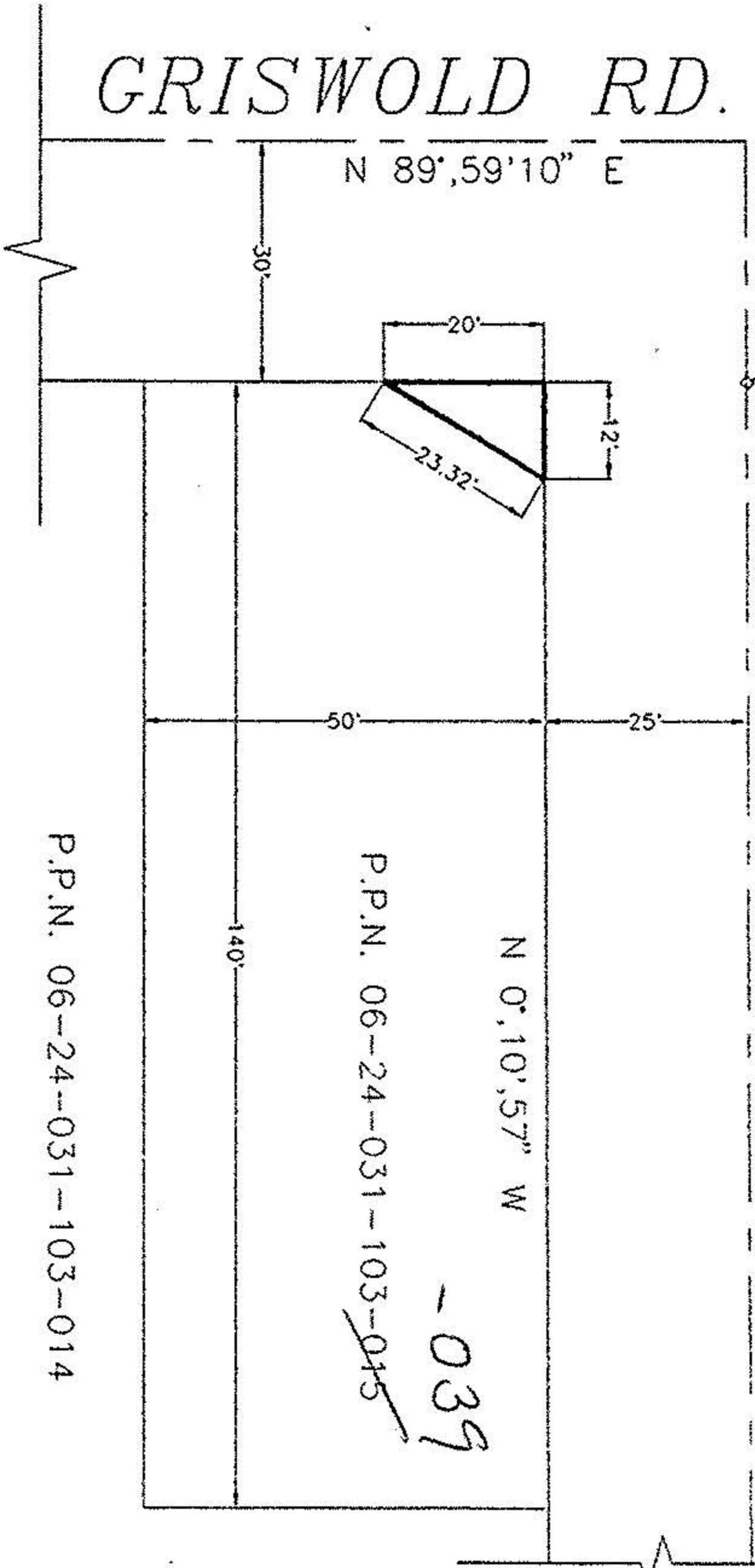


GRISWOLD RD. 60'

MONUMENT BOX

MORAN ST. 50' 6"

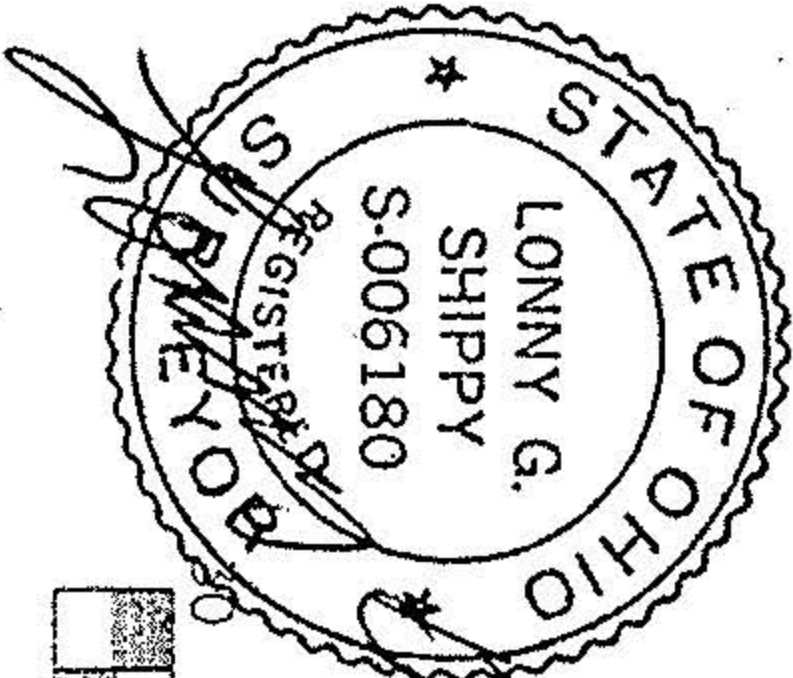


P.P.N. 06-24-031-103-014

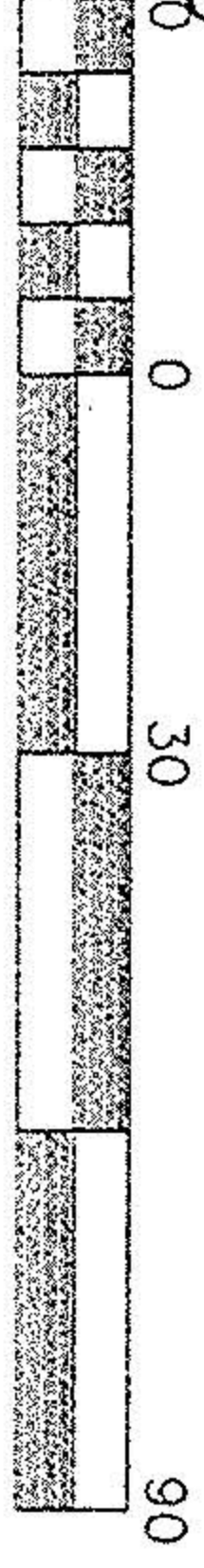
P.P.N. 06-24-031-103-015

-039

SITUATED IN THE CITY OF ELYRIA, COUNTY OF LORAIN AND STATE OF OHIO, AND BEING KNOWN AS PART OF ORIGINAL LOT NUMBER 31, WEST OF BLACK RIVER AND BEING PART OF LEONA HEIGHTS ALLOTMENT, SUBLOT 551 AS RECORDED IN VOLUME 6, PAGE 35 & 36 OF LORAIN COUNTY RECORD OF PLATS.



*Lonny G. Shippy*  
8/16/94



Scale 1" = 30 ft

APPROVED BY PLANNING COMMISSION  
CITY OF ELYRIA, O.  
NO PLAT REQUIRED  
*Shippy*  
DATE 8-16-94

CITY OF ELYRIA DEPARTMENT OF PUBLIC SERVICE DIVISION OF ENGINEERING		RIGHT OF WAY ACQUISITION FOR GRISWOLD ROAD PROJECT	
REVISION	DATE	DRAWN BY: VJ	DATE: 08-14-94
DESIGNED BY:	DATE:	CHECKED BY:	DATE:
SCALE: 1"=30'		SHEET 1 OF 1	