

21501

APPROVED  
LORAIN CO.  
MAP DEPT

DATE 9-26-95

PAGE 6-80

BY CAROLYN  
FRANCIS

#21501

NORTH

0 50 100  
FEET  
SCALE: 1" = 30'

### SURVEY MAP

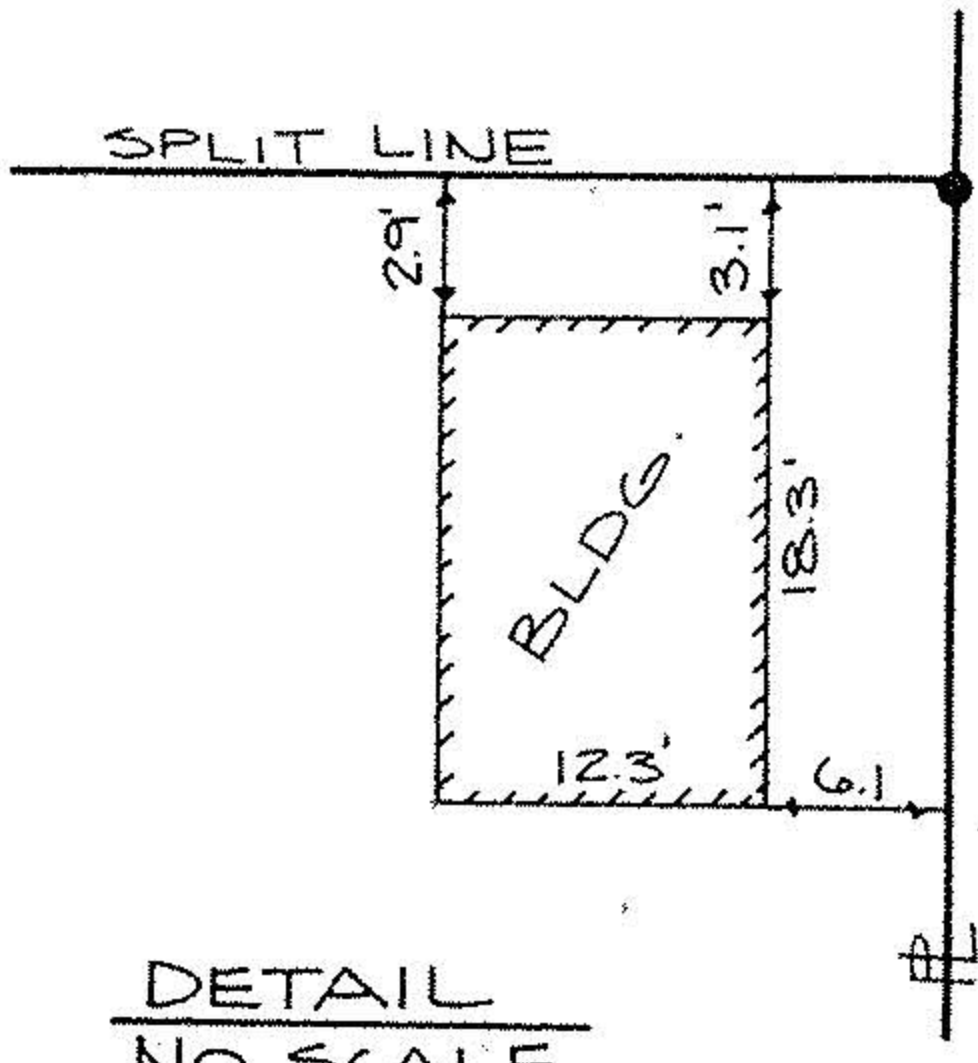
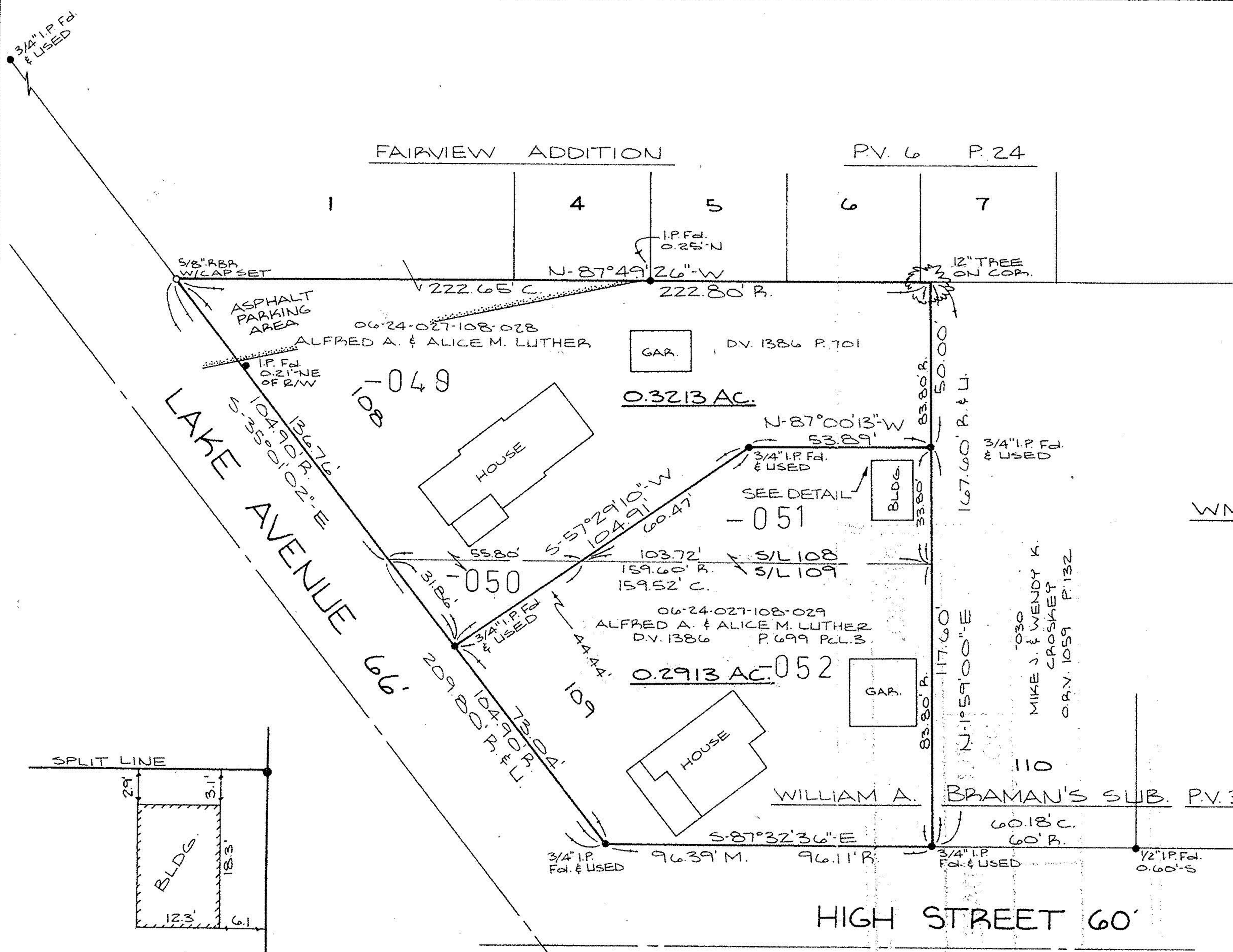
SUBLOT Nos. 108 & 109 IN  
WM. A. BRAMAN'S SUBDIVISION P.V. 3 P. 1  
CITY OF ELYRIA  
COUNTY OF LORAIN  
STATE OF OHIO  
AUGUST 16, 1995

PREPARED BY:  
**KS ASSOCIATES INC.**  
ENGINEERS SURVEYORS

*David L. Elwell*  
REG. SURV. No. 6333



FAIRVIEW ADDITION P.V. 6 P. 24



DETAIL  
NO SCALE

HIGH STREET 60'