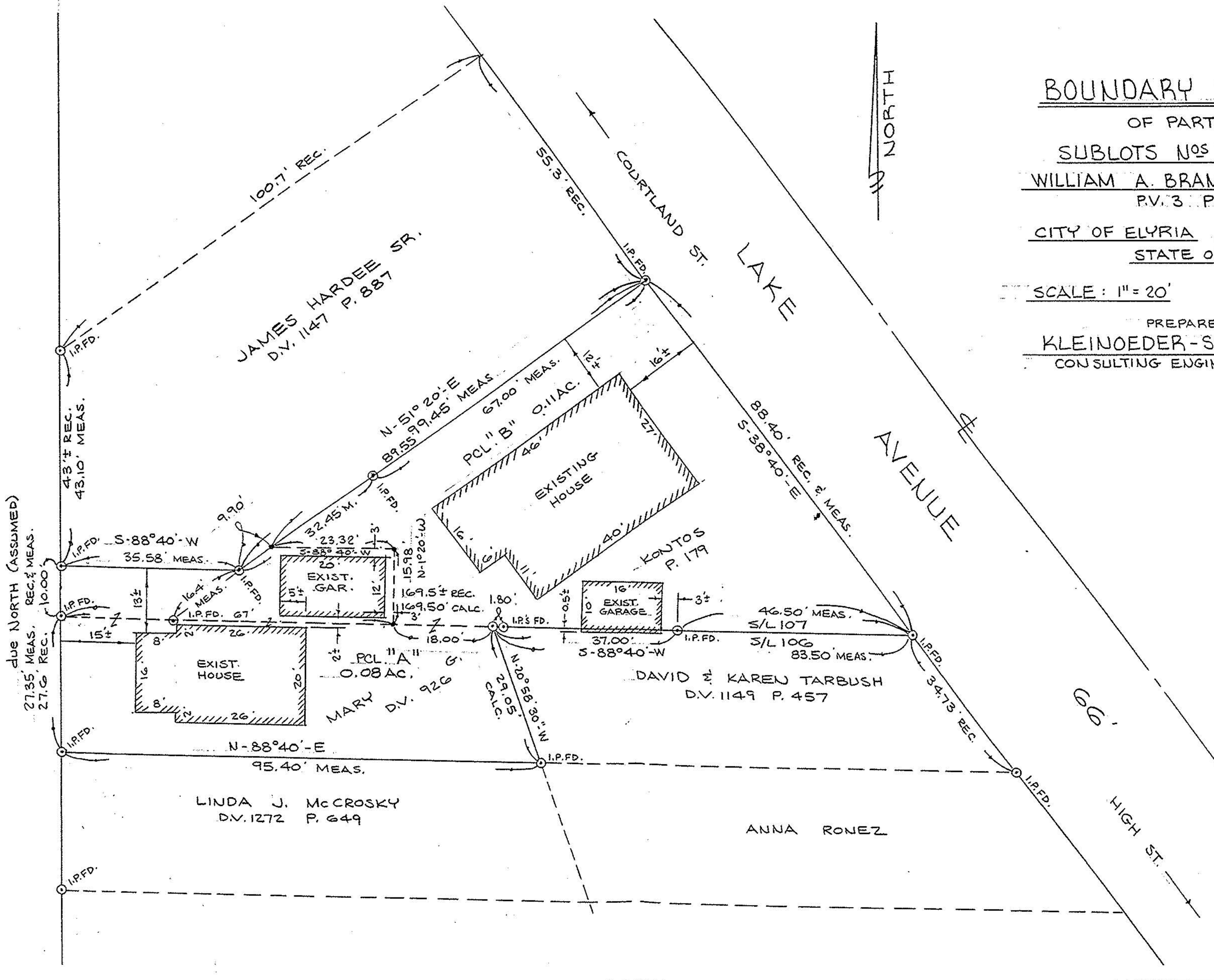


WOODLAND AVENUE

66'

due North (ASSUMED)



BOUNDARY SURVEY
 OF PARTS OF
SUBLOTS NOS 106 & 107
WILLIAM A. BRAMAN'S ADDITION
 P.V. 3 P. 1
CITY OF ELYRIA COUNTY OF LORAIN
STATE OF OHIO

SCALE: 1" = 20' FEB. 18, 1983

PREPARED BY
KLEINOEDER-SCHMIDT & ASSOC.
 CONSULTING ENGINEERS & SURVEYORS

#22609-D

APPROVED
LORAIN CO.
MAP DEPT.
 DATE 7/17/98
 PAGE 6-79
 BY TJS
 VOID AFTER 22609-D