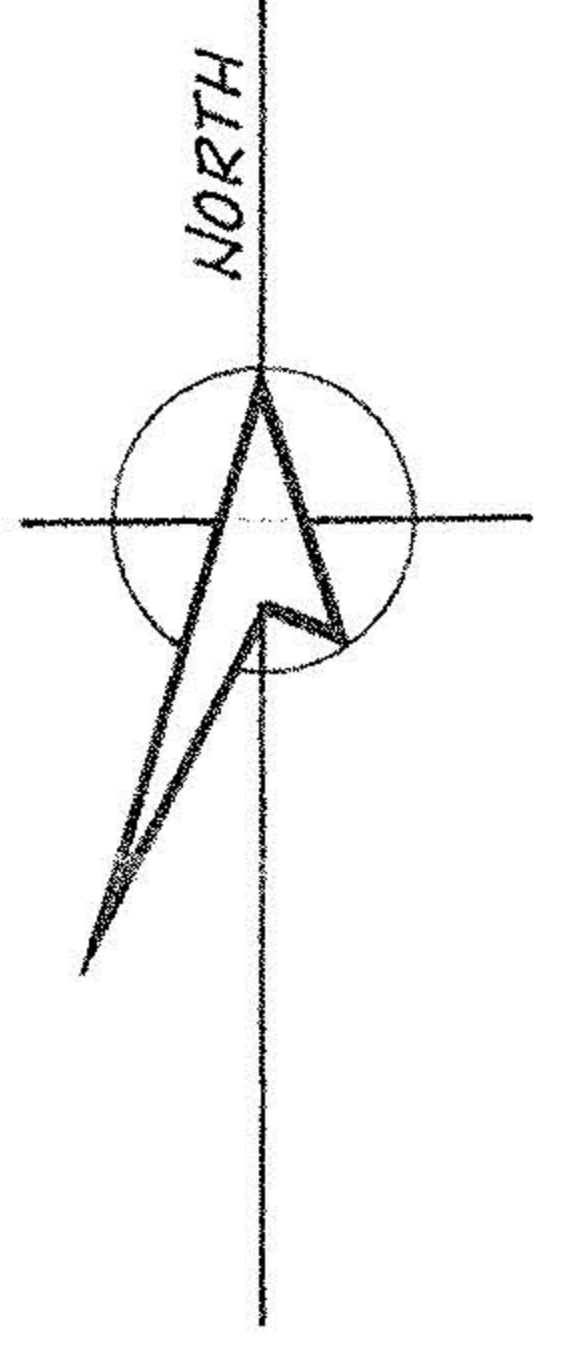


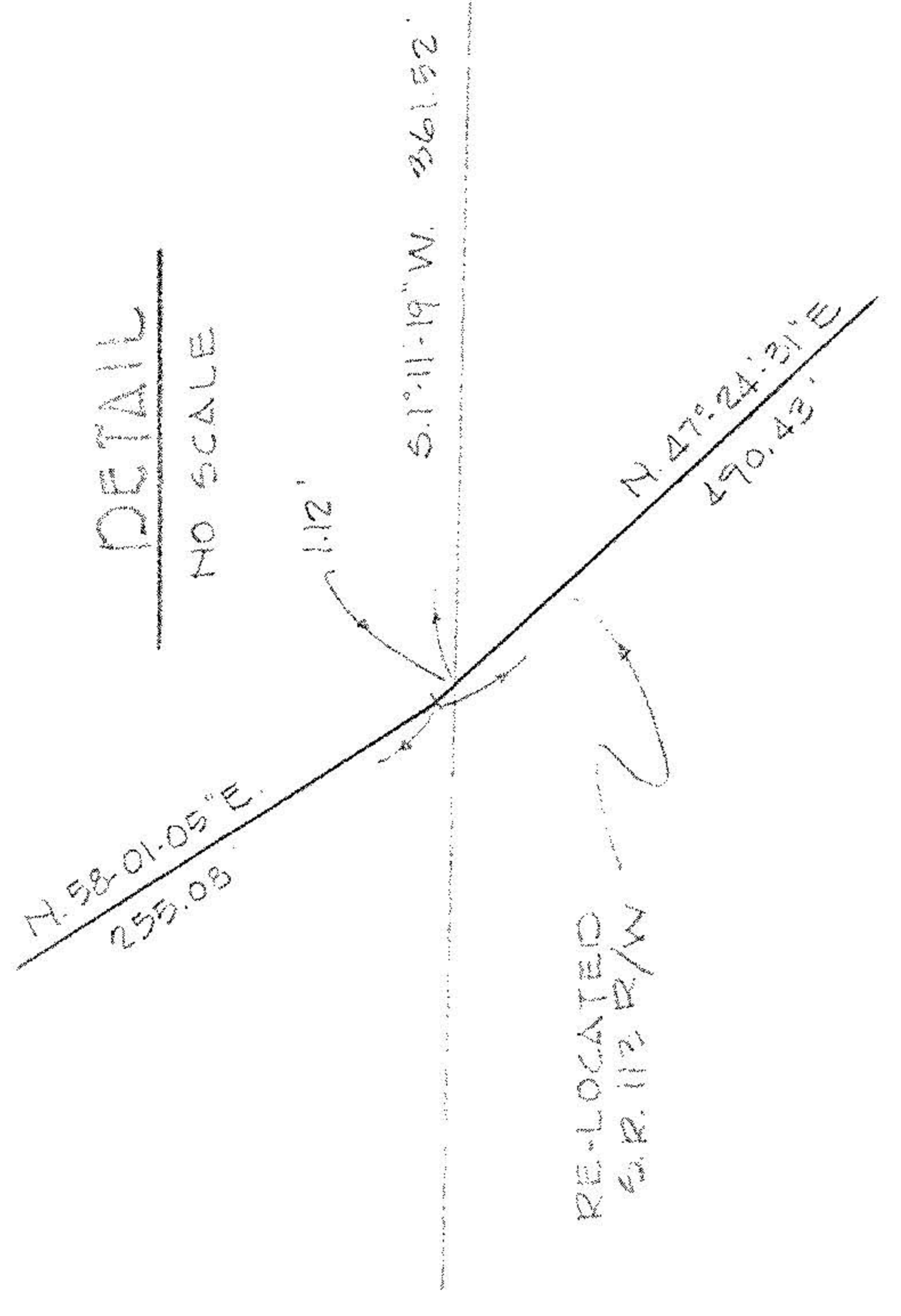
BRUCE M. & FREDERICK C. EPPLEY

PARTS OF ORIGINAL LOTS 19 & 20, WEST OF RIVER, ELYRIA TWP.,
LORAIN COUNTY, STATE OF OHIO
SCALE: 1" = 120'
MAY 1985
LAUNDON, SIMON, CAHL & ASSOC. • ENGINEERS • SURVEYORS

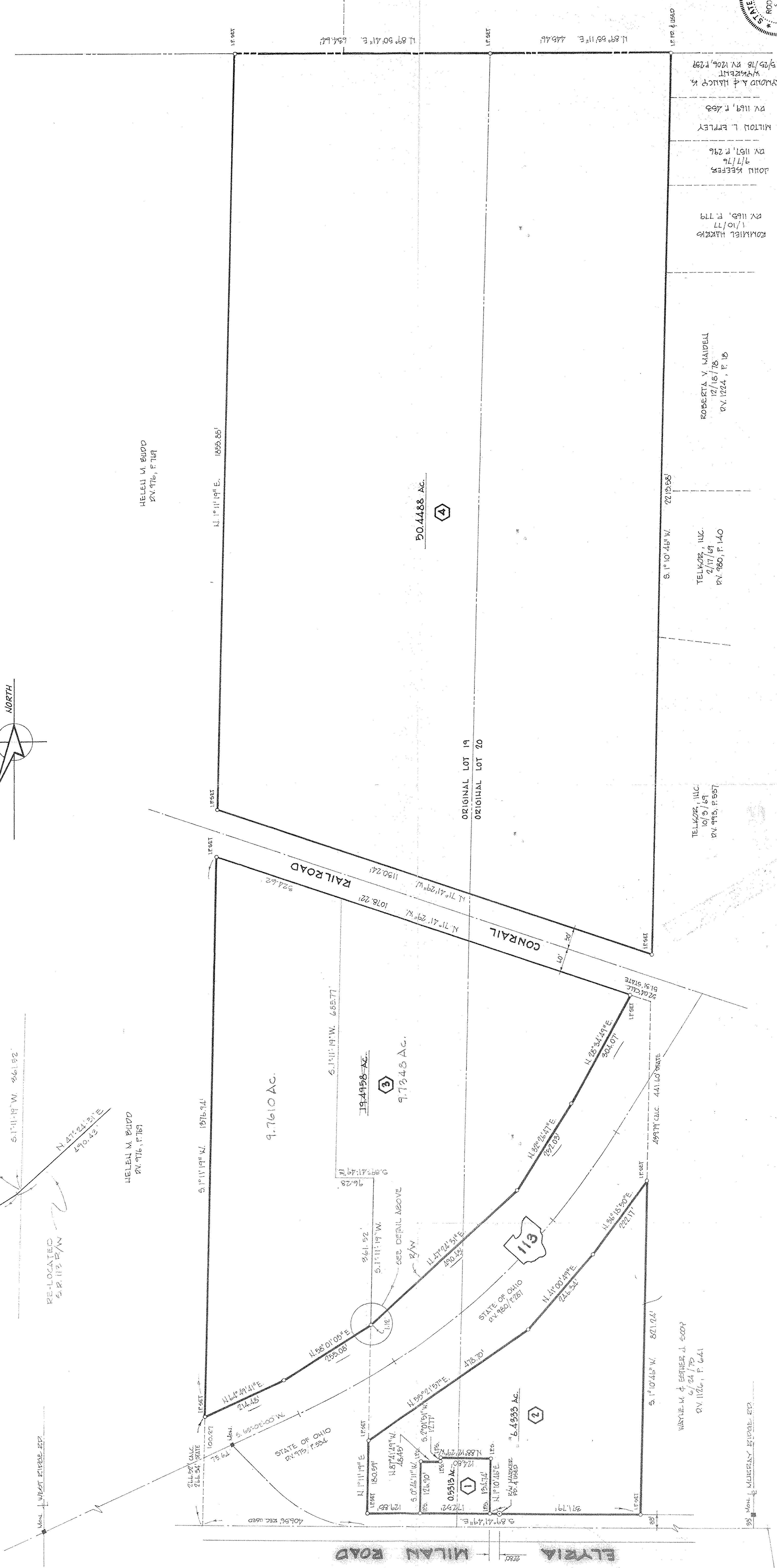
REVISED 8-20-98 CALC. 9.7610 AC. FCL



DETAIL
NO SCALE



SCALE
1" = 120'



#22475-D
APPROVED
LORAIN CO.
MAP DEPT.
DATE 9-1-98
PAGE 6-71 & 6-92
BY T. Monahan
VOID AFTER 22475-D