

BOUNDARY SURVEY
 CITY OF ELYRIA LORAIN COUNTY
 STATE OF OHIO
 PART OF ORIGINAL ELYRIA TOWNSHIP LOTS 14 & 15
 WEST OF THE RIVER
 AS RECORDED IN O.R. VOL. 1467, PG. 463
 06-24-015-000-045

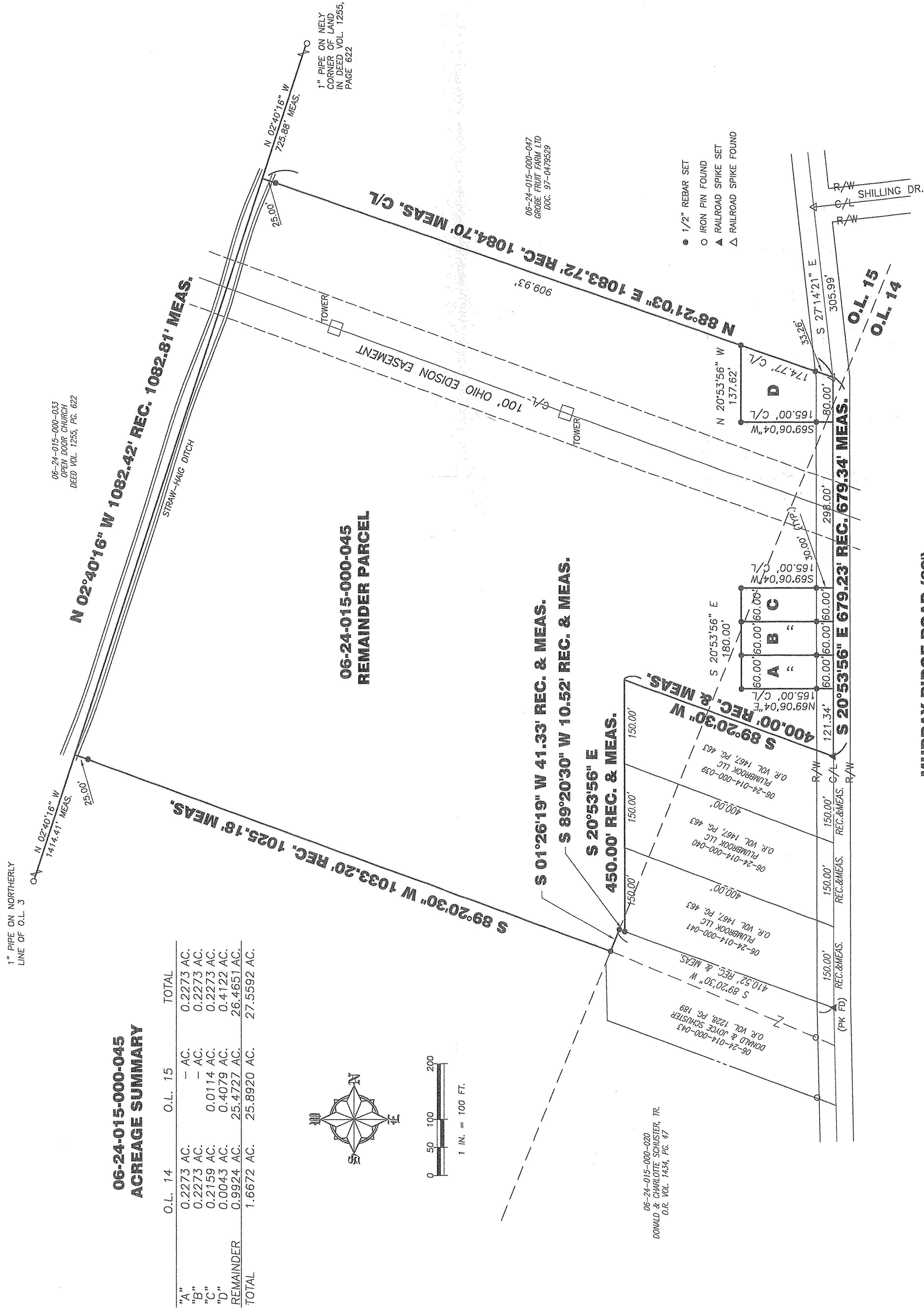
SITUATED IN THE CITY OF ELYRIA, COUNTY OF LORAIN, STATE OF OHIO
 AND BEING PART OF ORIGINAL ELYRIA TOWNSHIP LOTS 14 & 15,
 WEST OF THE RIVER.
 I CERTIFY THAT AT THE REQUEST OF THE OWNERS I HAVE SURVEYED
 AND PLATTED THE LANDS SHOWN HEREON. ALL MEASUREMENTS ARE
 IN FEET AND DECIMAL PARTS THEREOF. ANGLES ARE TO AN
 ASSUMED MERIDIAN AND ARE USED TO DESCRIBE ANGLES ONLY.



PREPARED FOR
 SPRINGERBROOK LTD
 33488 LIBERTY PARKWAY
 NORTH RIDGEVILLE, OHIO 44039
 (440) 327-3030
 (440) 327-3071 FAX

PREPARED BY
 HAYWOOD CIVIL ENGINEERING
 630 CLEVELAND STREET
 ELYRIA, OHIO 44035
 (440) 365-9831
 (440) 365-3426 FAX

Haywood
 CIVIL ENGINEERING
 & LAND SURVEYING
 ELYRIA, OHIO



**06-24-015-000-045
 ACREAGE SUMMARY**

	O.L. 14	O.L. 15	TOTAL
"A"	0.2273 AC.	- AC.	0.2273 AC.
"B"	0.2273 AC.	- AC.	0.2273 AC.
"C"	0.2159 AC.	0.0114 AC.	0.2273 AC.
"D"	0.0043 AC.	0.4079 AC.	0.4122 AC.
REMAINDER	0.9924 AC.	25.4727 AC.	26.4651 AC.
TOTAL	1.6672 AC.	25.8920 AC.	27.5592 AC.

06-24-015-000-045
 DONALD & JORCE SCHUSTER, TR.
 O.R. VOL. 1467, PG. 463

MURRAY RIDGE ROAD (60')